

JX-C:/Bruker/MSD-007, USER=Lab, GNAME=72705-5, KEXP=1, F2C00=1
 F1=0.000ppm, F2=0.000ppm, W1=0.50cm, MAXI=10000.00cm, XC=1.000

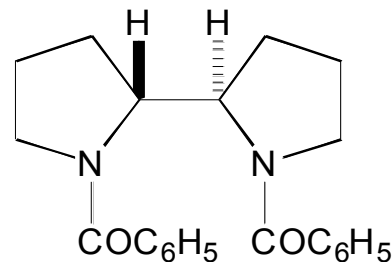
Current Data Parameters
 NAME 72705-5
 EXPNO 1
 PROCNO 1

F2 - Acquisition Parameters
 Date_ 20020709
 Time 14.34
 INSTRUM spect
 PROBHD 5 mm QNP 1H
 PULPROG zg30
 TD 32768
 SOLVENT CDCl3
 NS 16
 DS 2
 SWH 6578.947 Hz
 FIDRES 0.200774 Hz
 AQ 2.4904180 sec
 RG 101.6
 DW 76.000 usec
 DE 6.00 usec
 TE 300.0 K
 D1 0.10000000 sec

CHANNEL f1
 NUC1 1H
 P1 10.50 usec
 PL1 6.00 dB
 SFO1 399.872452 MHz

F2 - Processing parameters
 SI 16384
 SF 399.8700207 MHz
 WDW no
 SSB 0
 LB 0.00 Hz
 GB 0
 PC 1.00

#	ADDRESS	FREQ(MHZ)	INTENSITY	PHASE
1	6865.2	2071.203	7.4304	10.00
2	6868.6	2069.867	7.4271	12.23
3	6870.3	2065.551	7.4163	4.76
4	6884.4	2063.509	7.4112	14.68
5	6888.0	2061.781	7.4067	13.62
6	6975.1	2057.896	7.3921	1.75
7	6976.0	2056.576	7.3183	1.32
8	6981.8	2054.411	7.3154	1.22
9	6991.7	2050.416	7.3034	6.60
10	6998.8	2047.579	7.2963	2.67
11	7004.5	2045.299	7.2906	5.02
12	7008.6	2043.651	7.2865	9.18
13	7013.2	2041.800	7.2819	7.32
14	7017.8	2040.037	7.2772	15.00
15	7022.2	2041.165	7.2658	7.42
16	7026.0	2042.639	7.2590	13.23
17	7048.3	2037.700	7.2466	2.18
18	7052.4	2036.065	7.2425	3.97
19	7057.6	2035.070	7.2373	2.62
20	9635.6	1858.789	4.6485	0.43
21	9637.8	1849.862	4.6262	5.19
22	9664.6	1847.129	4.6193	4.45
23	9672.2	1844.098	4.6117	5.04
24	9694.8	1834.097	4.5890	0.40
25	10440.3	1532.032	3.8313	2.59
26	10462.2	1526.873	3.8184	2.88
27	10471.2	1523.241	3.8083	3.44
28	10475.6	1521.492	3.8050	3.42
29	10484.0	1518.083	3.7964	3.32
30	10488.3	1516.339	3.7921	3.52
31	10497.5	1512.677	3.7829	3.13
32	10510.1	1507.696	3.7702	2.00
33	11042.7	1283.760	3.2555	2.68
34	11062.1	1285.076	3.2160	4.29
35	11068.0	1283.233	3.2091	2.87
36	11079.0	1278.811	3.1981	3.28
37	11088.0	1275.537	3.1899	3.83
38	11106.1	1268.306	3.1718	2.63
39	11185.0	1245.018	2.2883	0.55
40	12036.8	906.613	2.2673	1.48
41	12043.5	902.815	2.2578	0.94
42	12025.5	899.126	2.2485	2.33
43	12036.8	894.589	2.2372	2.06
44	12043.7	891.812	2.2303	1.81
45	12056.2	886.777	2.2177	2.67
46	12065.2	883.191	2.2087	1.00
47	12075.1	879.202	2.1987	1.02
48	12096.3	870.698	2.1775	0.80
49	12209.2	825.347	2.0640	0.82
50	12221.0	820.269	2.0513	0.76
51	12229.6	817.171	2.0456	1.52
52	12240.3	812.848	2.0328	1.00
53	12248.2	809.684	2.0249	2.03
54	12261.0	804.566	2.0121	2.37
55	12270.3	800.815	2.0027	1.03
56	12279.6	797.090	1.9934	1.87
57	12288.8	793.392	1.9841	1.00
58	12296.0	790.509	1.9769	0.93
59	12300.8	788.584	1.9721	1.16
60	12327.0	778.067	1.9458	1.10
61	12335.0	774.490	1.9369	1.31
62	12339.0	773.219	1.9337	1.58
63	12347.6	769.760	1.9250	2.27
64	12356.4	766.261	1.9163	2.77
65	12368.6	761.346	1.9040	3.06
66	12378.0	757.570	1.8945	2.49
67	12388.0	753.200	1.8856	2.36
68	12399.6	748.009	1.8729	1.85
69	12407.4	745.775	1.8650	1.00
70	12420.0	740.703	1.8524	0.80
71	12460.8	724.326	1.8114	2.37
72	12469.2	720.964	1.8030	2.06
73	12480.8	716.306	1.7913	2.28
74	12490.0	712.582	1.7820	3.34
75	12500.3	708.453	1.7717	1.76
76	12511.2	704.101	1.7628	1.69
77	12518.5	701.157	1.7535	1.50
78	12562.7	482.644	1.2970	1.14
79	12977.0	476.518	1.1917	1.19



N,N'-BIS-BENZOYL-(R,R')-BIS PYRROLIDINE

