

143.20

126.39  
127.60  
126.34

94.00

77.43  
77.00  
76.58  
73.62

55.31

23.63



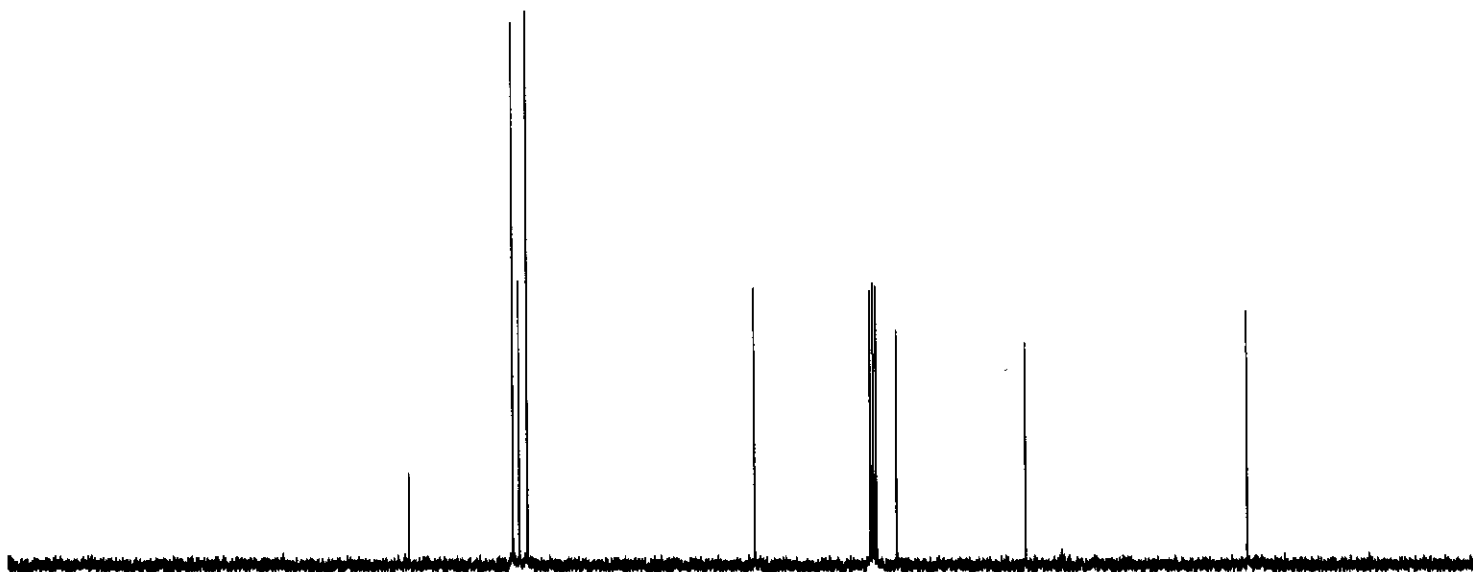
Current Data Parameters  
 NAME wdp1011 orgsyn prep 100% scale  
 EXPNO 2  
 PROCNO 1

F2 - Acquisition Parameters  
 Date\_ 20060519  
 Time 20.20  
 INSTRUM spect  
 PROBHD 5 mm DUL 1H-13  
 PULPROG zgpg  
 TD 65536  
 SOLVENT CDC13  
 NS 58  
 DS 4  
 SWH 18115.941 Hz  
 FIDRES 0.276427 Hz  
 AQ 1.8088436 sec  
 RG 362  
 DW 27.600 usec  
 DE 6.00 usec  
 TE 300.0 K  
 DI 10.00000000 sec  
 d11 0.03000000 sec  
 DELTA 9.89999962 sec  
 TD0 1

===== CHANNEL f1 =====  
 NUC1 13C  
 P1 9.00 usec  
 PL1 1.80 dB  
 SFO1 75.5381641 MHz

===== CHANNEL f2 =====  
 CPDPRG2 waltz16  
 NUC2 1H  
 PCPD2 92.00 usec  
 PL2 0.00 dB  
 PL12 20.00 dB  
 PL13 20.00 dB  
 SFO2 300.3812015 MHz

F2 - Processing parameters  
 SI 65536  
 SF 75.5306147 MHz  
 WDW EM  
 SSB 0  
 LB 1.00 Hz  
 GB 0  
 PC 1.40



180 160 140 120 100 80 60 40 20 ppm