

SDF-I-096B_13C400MHz

Current Data Parameters
NAME SDFI-096B_13C
EXPNO 1
PROCNO 1

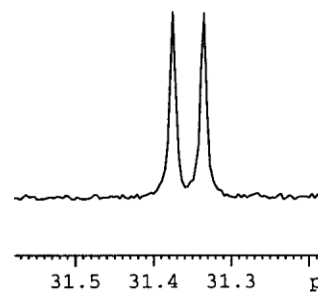
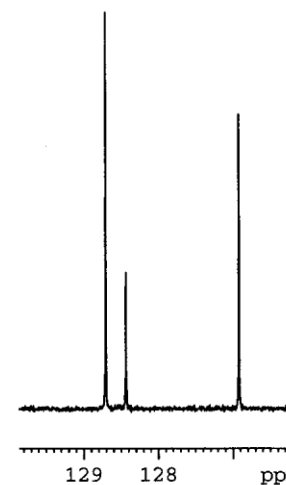
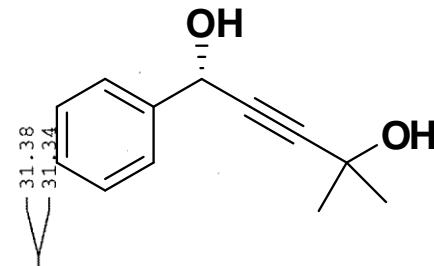
F2 - Acquisition Parameters
Date_ 20070419
Time 12.40
INSTRUM spect
PROBHD 5 mm BBO BB-1H
PULPROG zgpg30
TD 65536
SOLVENT CDCl3
NS 128
DS 2
SWH 23980.814 Hz
FIDRES 0.365918 Hz
AQ 1.3664756 sec
RG 8192
DW 20.850 usec
DE 6.00 usec
TE 294.2 K
D1 2.00000000 sec
d11 0.03000000 sec
DELTA 1.89999998 sec
TDO 1

==== CHANNEL f1 =====
NUC1 13C
P1 8.75 usec
PL1 -3.00 dB
SFO1 100.6228298 MHz

==== CHANNEL f2 =====
CPDPRG2 waltz16
NUC2 1H
PCPD2 90.00 usec
PL2 -1.00 dB
PL12 14.52 dB
PL13 18.00 dB
SFO2 400.1316005 MHz

F2 - Processing parameters
SI 65536
SF 100.6127557 MHz
WDW no
SSB 0
LB 0.00 Hz
GB 0
PC 1.40

140.67
128.70
128.43
126.91
91.45
82.03
77.55
77.23
76.91
65.36
64.37



200 190 180 170 160 150 140 130 120 110 100 90 80 70 60 50 40 30 20 10 pp