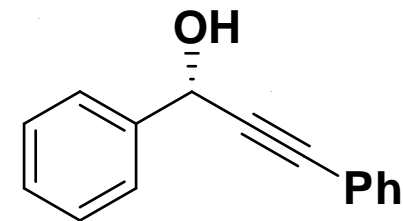


SDF-I-090B_400Mhz 20mg



Current Data Parameters
NAME SDFI-090B_400Mhz
EXPNO 1
PROCNO 1

F2 - Acquisition Parameters

Date_ 20070421
Time 13.01
INSTRUM spect
PROBHD 5 mm BBO BB-1H
PULPROG zg30
TD 65536
SOLVENT
NS 16
DS 2
SWH 8278.146 Hz
FIDRES 0.126314 Hz
AQ 3.9584243 sec
RG 128
DW 60.400 usec
DE 6.00 usec
TE 293.2 K
D1 1.00000000 sec
TD0 1

==== CHANNEL f1 =====
NUC1 1H
P1 15.07 usec
PL1 0.00 dB
SFO1 400.1324710 MHz

F2 - Processing parameters

SI 65536
SF 400.1300093 MHz
WDW no
SSB 0
LB 0.00 Hz
GB 0
PC 1.00

