

cdt-6-19



Current Data Parameters
 NAME cdt-6-18
 EXPNO 1
 PROCNO 1

F2 - Acquisition Parameters

Date 20070815
 Time 17.25
 INSTRUM spect
 PROBHD 5 mm Multinucl
 PULPROG zg
 TD 65536
 SOLVENT CDCl3
 NS 6
 DS 2
 SWH 10330.578 Hz
 FIDRES 0.157632 Hz
 AQ 3.1719923 sec
 RG 114
 DW 48.400 usec
 DE 6.00 usec
 TE 297.2 K
 D1 8.00000000 sec
 TD0 1

==== CHANNEL f1 =====

NUC1 1H
 P1 9.00 usec
 PL1 0.00 dB
 SFO1 500.1330885 MHz

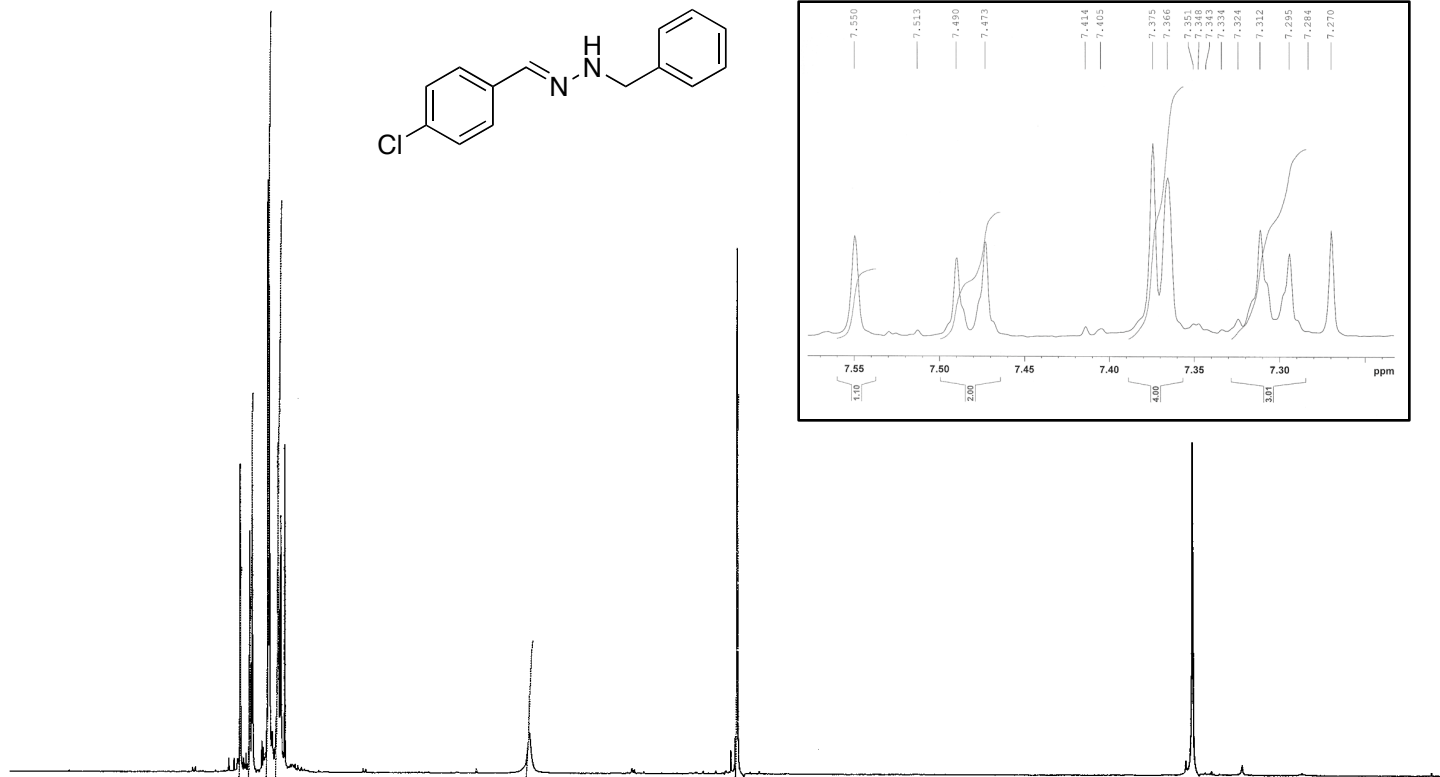
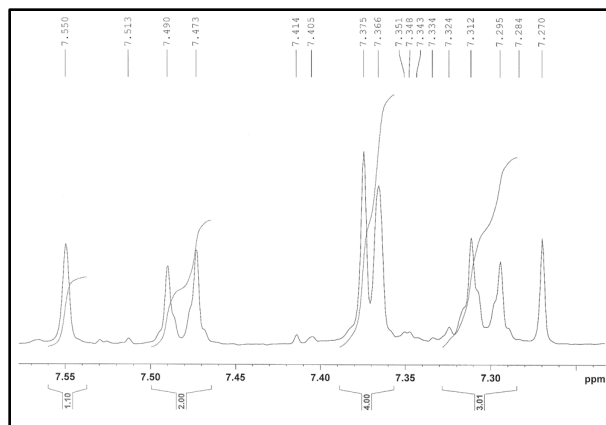
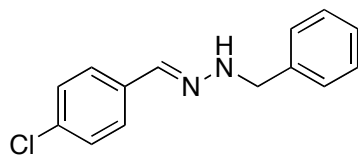
F2 - Processing parameters

SI 32768
 SF 500.1300086 MHz
 WDW EM
 SSB 0
 LB 0.30 Hz
 GB 0
 PC 1.00

7.513
7.490
7.473
7.414
7.405
7.375
7.366
7.351
7.348
7.343
7.334
7.324
7.312
7.295
7.284
7.270
5.740

4.476
4.448
4.436

1.578



8.5 8.0 7.5 7.0 6.5 6.0 5.5 5.0 4.5 4.0 3.5 3.0 2.5 2.0 1.5 1.0 ppm

1.10 2.00 4.00 3.01 0.73 2.00