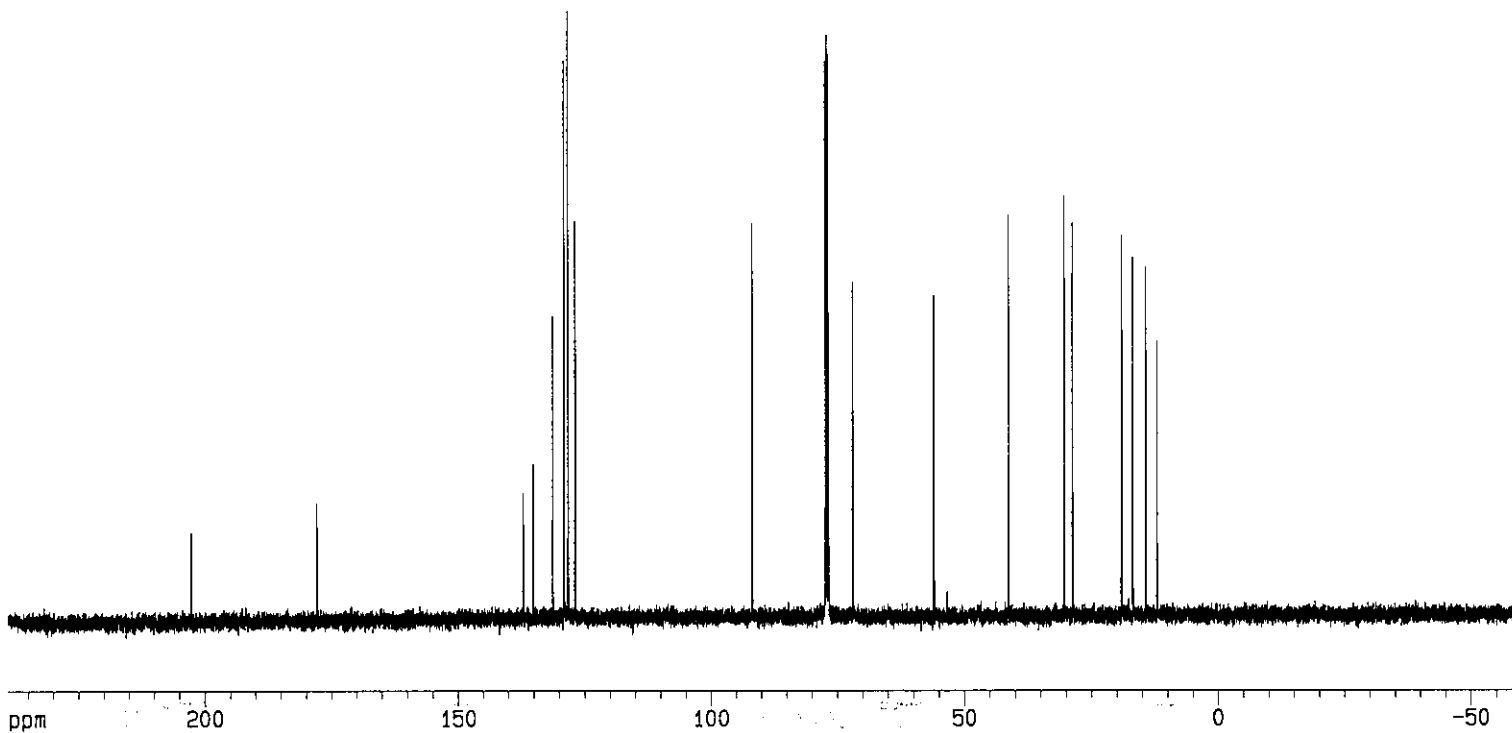
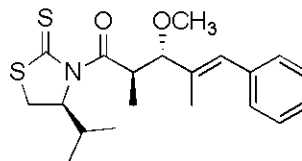


ppm

202.66

177.86

137.02
135.07
131.19
129.01
128.18
126.7891.79
77.25
77.00
76.75
71.9155.99
53.42
41.33
30.36
28.74
19.05
16.89
14.30
12.16

Current Data Parameters

NAME OS-step2flc13
EXPNO 1
PROCNO 1

F2 - Acquisition Parameters

Date_ 20080116
Time 18.00
INSTRUM spect
PROBHD 5 mm GNP 1H
PULPROG zgdc
TD 75184
SOLVENT CDC13
NS 1490
DS 0
SWH 37593.984 Hz
FIDRES 0.500026 Hz
AQ 0.9999972 sec
RG 8192
DW 13.300 usec
DE 7.50 usec
TE 300.0 K
D1 0.1000000 sec
d11 0.0300000 sec

===== CHANNEL f1 =====

NUC1 13C
P1 4.60 usec
PL1 0.00 dB
SF01 125.7690572 MHz

===== CHANNEL f2 =====

CPDPRG2 waltz16
NUC2 1H
PCPD2 90.00 usec
PL2 120.00 dB
PL12 19.00 dB
SF02 500.1320005 MHz

F2 - Processing parameters

SI 32768
SF 125.7577941 MHz
WDW EM
SSB 0
LB 1.00 Hz
GB 0
PC 1.40

1D NMR plot parameters

CX 20.00 cm
F1P 239.032 ppm
F1 30060.14 Hz
F2P -59.908 ppm
F2 -7533.85 Hz
PPMCM 14.94698 ppm/cm
HZCM 1879.69934 Hz/cm