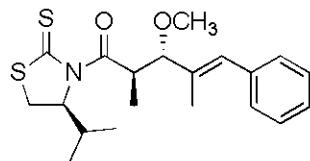


ppm

7.37015  
7.35440  
7.34043  
7.33194  
7.32912  
7.31572  
7.26102  
7.24423  
6.52020  
5.34892  
5.34683  
5.30035  
5.23026  
5.21639  
5.21030  
5.19645  
3.93890  
3.91893  
3.47192  
3.45442  
3.44910  
3.43161  
3.16601  
3.00754  
3.00348  
2.98471  
2.98065  
2.37092  
2.35972  
1.82418  
1.82166  
1.09163  
1.07807  
1.04084  
1.02699  
1.01692  
1.00297



Integral

3.6002  
1.1029  
1.0000  
0.9520  
0.4876  
0.9507  
1.0293  
1.0505  
3.0161  
1.0931  
1.0066  
3.0555  
3.3109  
6.5121

ppm 12 10 8 6 4 2 0

Current Data Parameters  
NAME os-step2-f1  
EXPNO 1  
PROCNO 1

F2 - Acquisition Parameters  
Date\_ 20080116  
Time 17.55  
INSTRUM spect  
PROBHD 5 mm BBI 1H-BB  
PULPROG zg  
TD 28010  
SOLVENT CDC13  
NS 4  
DS 0  
SWH 7002.801 Hz  
FIDRES 0.250011 Hz  
AQ 1.9999640 sec  
RG 64  
DW 71.400 usec  
DE 4.50 usec  
TE 300.0 K  
D1 1.00000000 sec

===== CHANNEL f1 =====  
NUC1 1H  
P1 5.80 usec  
PL1 0.00 dB  
SFO1 499.8779993 MHz

F2 - Processing parameters  
SI 32768  
SF 499.8750141 MHz  
WDW EM  
SSB 0  
LB 0.30 Hz  
GB 0  
PC 1.00

1D NMR plot parameters  
CX 20.00 cm  
CY 10.00 cm  
F1P 12.976 ppm  
F1 6466.59 Hz  
F2P -1.033 ppm  
F2 -516.21 Hz  
PPMCM 0.70046 ppm/cm  
HZCM 350.14005 Hz/cm