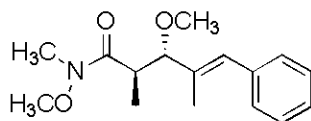


ppm

7.37484
7.35883
7.34461
7.33501
7.32129
7.26162
7.26021
7.24535
7.23165
6.54148
5.30099
5.29952
3.87684
3.85657
3.76361
3.76241
3.68174
3.25289
3.23440
3.20354
3.20235
3.18465
1.83404
1.01298
0.99565
0.98162



Integral

3.8567
0.7474
1.0000
0.9780
3.0566
3.7600
3.0063
3.0984
3.4241

ppm

Current Data Parameters
NAME os-step3-crprod
EXPNO 1
PROCNO 1

F2 - Acquisition Parameters

Date_ 20080119
Time 13.19
INSTRUM spect
PROBHD 5 mm BBI 1H-BB
PULPROG zg
TD 28010
SOLVENT CDCl3
NS 4
DS 0
SWH 7002.801 Hz
FIDRES 0.250011 Hz
AQ 1.9999640 sec
RG 256
DW 71.400 usec
DE 4.50 usec
TE 300.0 K
D1 1.00000000 sec

==== CHANNEL f1 =====
NUC1 1H
P1 5.80 usec
PL1 0.00 dB
SFO1 499.8779993 MHz

F2 - Processing parameters

SI 32768
SF 499.8750141 MHz
WDW EM
SSB 0
LB 0.30 Hz
GB 0
PC 1.00

1D NMR plot parameters

CX 20.00 cm
CY 8.00 cm
F1P 12.976 ppm
F1 6486.59 Hz
F2P -1.033 ppm
F2 -516.21 Hz
PPMCM 0.70046 ppm/cm
HZCM 350.14005 Hz/cm