

~14:1

Crude

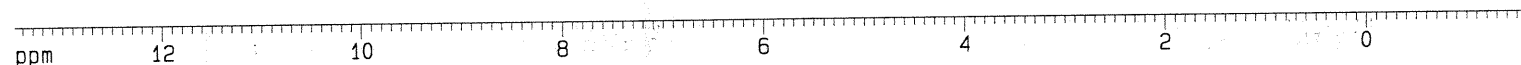
~95% Conversion

ppm

7.36296
7.34731
7.33319
7.32438
7.31069
7.26180
7.24028
7.22651
6.63313
5.30076
4.65049
3.49726
3.48823
3.37911
3.33671
3.31825
2.09110
1.89190
1.87196

Integral

0.0509
0.0960
0.1626
3.6196
0.8766
0.8889
0.0918
0.0997
0.0675
0.0659
0.9552
0.0340
0.0473
0.3260
5.9515
0.7994
0.4482
0.1755
0.0239
0.3055
3.0000



Current Data Parameters
NAME OS-2-step1cr
EXPNO 1
PROCNO 1

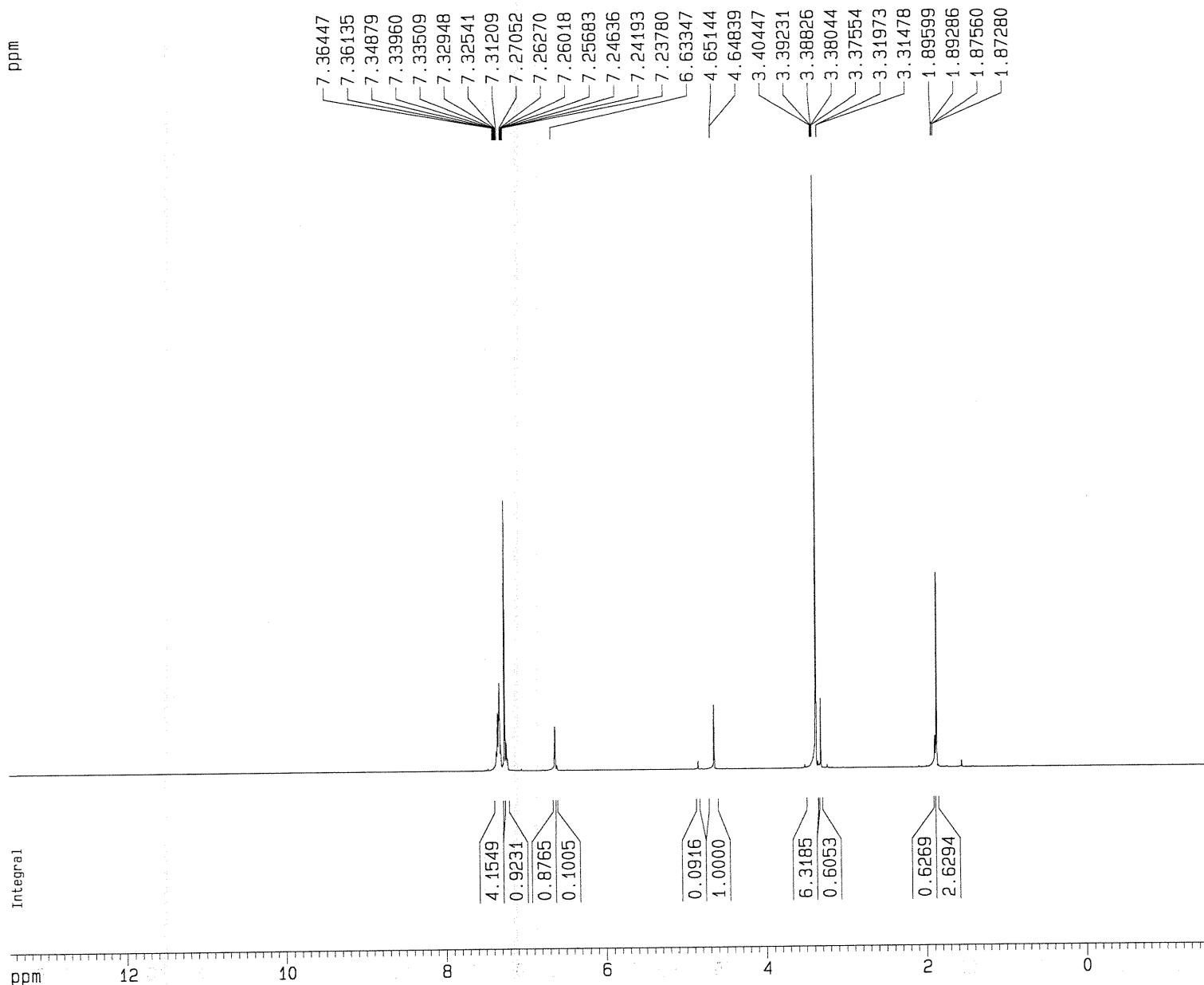
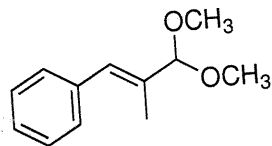
F2 - Acquisition Parameters
Date_ 20080508
Time 11.40
INSTRUM spect
PROBHD 5 mm BBI 1H-BB
PULPROG zg
TD 45044
SOLVENT CDCl3
NS 32
DS 0
SWH 7507.507 Hz
FIDRES 0.166671 Hz
AQ 2.9999804 sec
RG 57
DW 66.600 usec
DE 4.50 usec
TE 300.0 K
D1 1.00000000 sec

===== CHANNEL f1 =====
NUC1 1H
P1 5.80 usec
PL1 0.00 dB
SF01 499.8779993 MHz

F2 - Processing parameters
SI 32768
SF 499.8750140 MHz
WDW EM
SSB 0
LB 0.30 Hz
GB 0
PC 1.00

1D NMR plot parameters
CX 20.00 cm
CY 15.00 cm
F1P 13.481 ppm
F1 6739.04 Hz
F2P -1.537 ppm
F2 -768.46 Hz
PPMCM 0.75094 ppm/cm
HZCM 375.37537 Hz/cm

Step I
Distilled
major fraction
~ 10:1



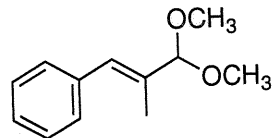
Current Data Parameters
NAME OS2-step1dis2
EXPNO 1
PROCNO 1

F2 - Acquisition Parameters
Date_ 20080519
Time 8.04
INSTRUM spect
PROBHD 5 mm BBI 1H-BB
PULPROG zg
TD 45044
SOLVENT CDCl3
NS 4
DS 0
SWH 7507.507 Hz
FIDRES 0.166671 Hz
AQ 2.9999804 sec
RG 45.3
DW 66.600 usec
DE 4.50 usec
TE 300.0 K
D1 1.00000000 sec

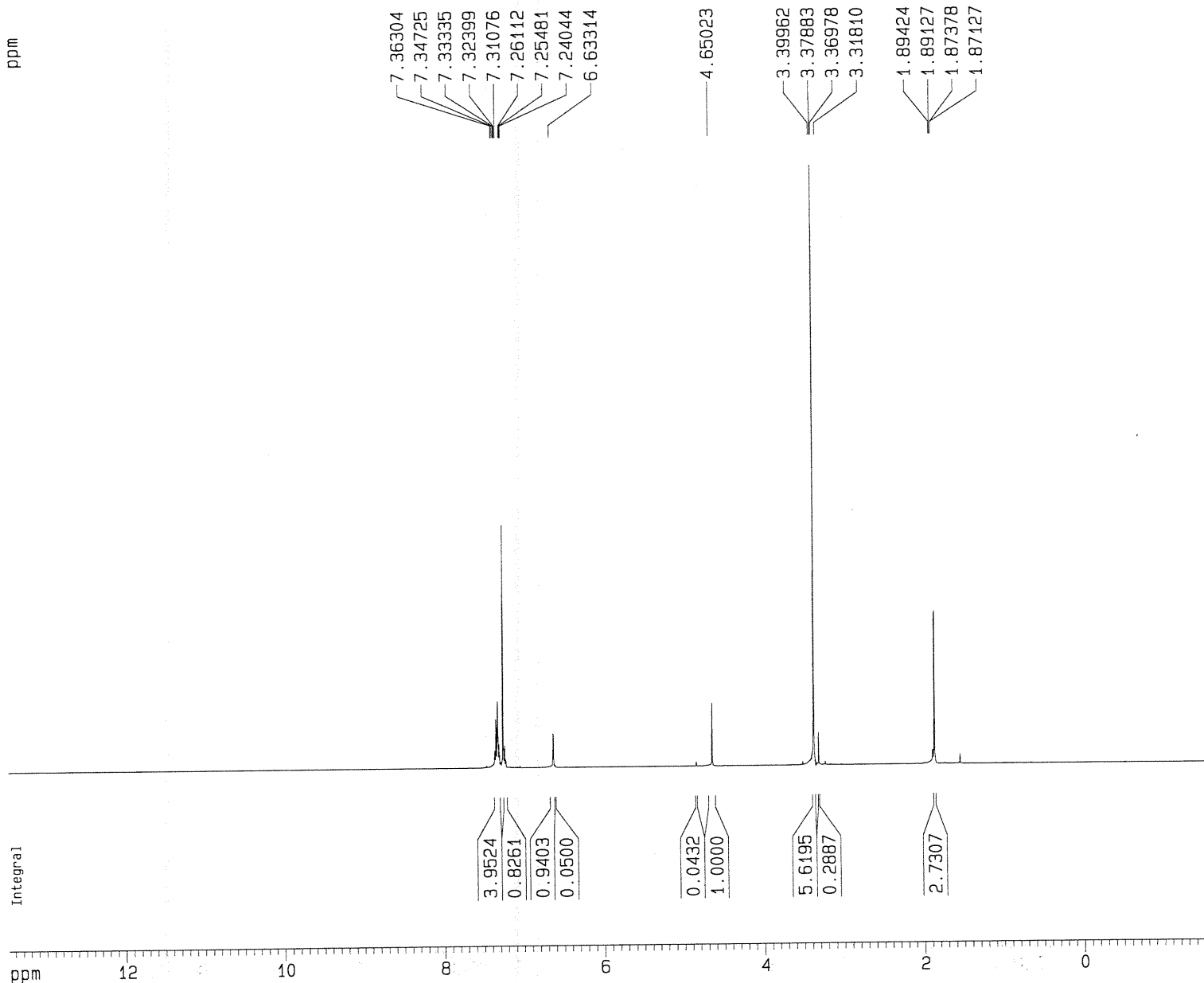
===== CHANNEL f1 =====
NUC1 1H
P1 5.80 usec
PL1 0.00 dB
SF01 499.8779993 MHz

F2 - Processing parameters
SI 32768
SF 499.8750140 MHz
WDW EM
SSB 0
LB 0.30 Hz
GB 0
PC 1.00

1D NMR plot parameters
CX 20.00 cm
CY 10.00 cm
F1P 13.481 ppm
F1 6739.04 Hz
F2P -1.537 ppm
F2 -768.47 Hz
PPMCM 0.75094 ppm/cm
HZCM 375.37537 Hz/cm



~23:1
final fraction



Current Data Parameters
NAME OS2-step1dis3
EXPNO 1
PROCNO 1

F2 - Acquisition Parameters
Date_ 20080519
Time 8.09
INSTRUM spect
PROBHD 5 mm BBI 1H-BB
PULPROG zg
TD 45044
SOLVENT CDC13
NS 4
DS 0
SWH 7507.507 Hz
FIDRES 0.166671 Hz
AQ 2.9999804 sec
RG 80.6
DW 66.600 usec
DE 4.50 usec
TE 300.0 K
D1 1.00000000 sec

===== CHANNEL f1 =====
NUC1 1H
P1 5.80 usec
PL1 0.00 dB
SF01 499.8779993 MHz

F2 - Processing parameters
SI 32768
SF 499.8750140 MHz
WDW EM
SSB 0
LB 0.30 Hz
GB 0
PC 1.00

1D NMR plot parameters
CX 20.00 cm
CY 10.00 cm
F1P 13.481 ppm
F1 6739.04 Hz
F2P -1.537 ppm
F2 -768.47 Hz
PPMCM 0.75094 ppm/cm
HZCM 375.37537 Hz/cm