

2008-021
nmr400b c-13

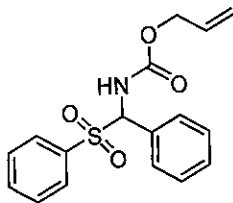
Current Data Parameters
NAME 2008-021
EXPNO 9
PROCNO 1

F2 - Acquisition Parameters
Date 20081213
Time 11.56
INSTRUM spect
PROBHD 5 mm QNP 1H/1
PULPROG zgdc
TD 65536
SOLVENT CDCl3
NS 3020
DS 4
SWH 26315.789 Hz
FIDRES 0.401547 Hz
AQ 1.2452340 sec
RG 8192
DW 19.000 usec
DE 7.00 usec
TE 300.0 K
D1 0.10000000 sec
d11 0.03000000 sec
TD0 40

CHANNEL f1
NUC1 13C
P1 3.30 usec
PL1 6.00 dB
SFO1 100.5584512 MHz

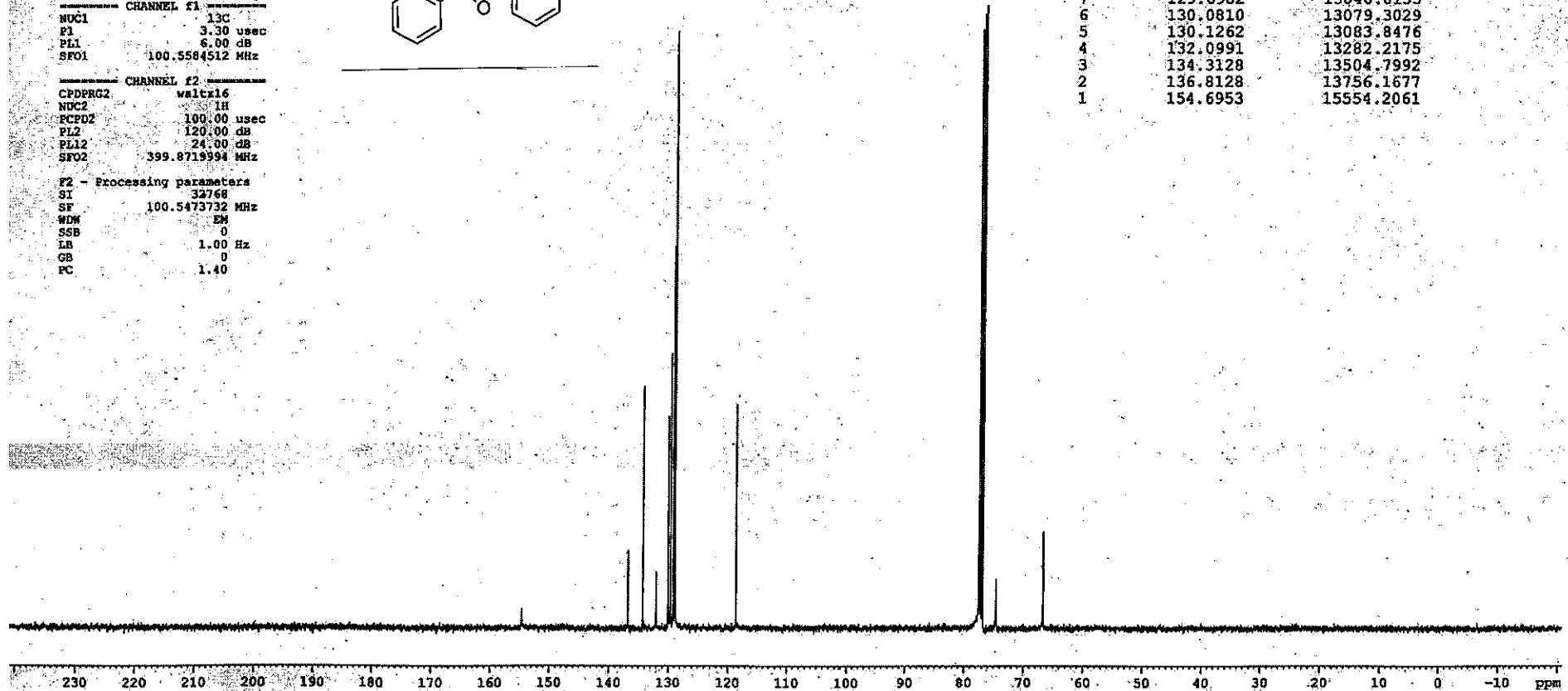
CHANNEL f2
CPDPRG2 waltz16
NUC2 1H
PCPD2 100.00 usec
PL2 120.00 dB
PL12 24.00 dB
SFO2 399.8719994 MHz

F2 - Processing parameters
SI 32768
SF 100.5473732 MHz
WDM EM
SSB 0
LB 1.00 Hz
GB 0
PC 1.40



154.70
136.81
134.31
132.10
130.13
130.08
129.70
129.25
128.99
118.65
77.55
77.44
77.23
76.92
74.67
66.74

Peak	?(F1) [ppm]	?(F1) [Hz]
16	66.7433	6710.8635
15	74.6737	7508.2444
14	76.9169	7733.7923
13	77.2349	7765.7663
12	77.4361	7785.9964
11	77.5521	7797.6599
10	118.6519	11930.1369
9	128.9851	12969.1130
8	129.2494	12995.6877
7	129.6982	13040.8133
6	130.0810	13079.3029
5	130.1262	13083.8476
4	132.0991	13282.2175
3	134.3128	13504.7992
2	136.8128	13756.1677
1	154.6953	15554.2061



230 220 210 200 190 180 170 160 150 140 130 120 110 100 90 80 70 60 50 40 30 20 10 0 -10 ppm

2008-021
nmr400b c-13

Current Data Parameters
NAME 2008-021
EXPNO 1
PROCNO 1

F2 - Acquisition Parameters
Date 20081213
Time 11.56
INSTRUM spect
PROBHD 5 mm QNP 1H/1
PULPROG zgpg
TD 65536
SOLVENT CDCl3
NS 3020
DS 4
SWH 26315.789 Hz
FIDRES 0.401547 Hz
AQ 1.2452340 sec
RG 8192
DW 19.000 usec
DE 7.00 usec
TE 300.0 K
D1 0.10000000 sec
d11 0.03000000 sec
TD0 40

CHANNEL f1
NUC1 13C
P1 3.30 usec
PL1 6.00 dB
SFO1 100.5584512 MHz

CHANNEL f2
CFDPRG2 waltr16
NUC2 1H
PCPD2 100.00 usec
PL2 120.00 dB
PL12 24.00 dB
SFO2 399.8719994 MHz

F2 - Processing parameters
SI 32768
SF 100.5473732 MHz
WDW EM
SSB 0
LB 1.00 Hz
GB 0
PC 1.40

134.31
132.10
130.13
130.08
129.70
129.25
128.99

118.65

