

2009-030
Recrystallized
nmr500c c-13

Current Data Parameters
NAME 2009-030
EXPNO 2
PROCNO 1

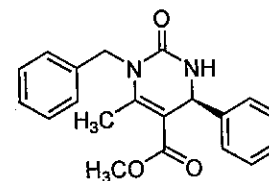
F2 - Acquisition Parameters
Date_ 20090207
Time 12.24
INSTRUM spect
PROBHD 5 mm QNP 1H/13
PULPROG zgdc
TD 131072
SOLVENT CDCl3
NS 1612
DS 4
SWH 40322.582 Hz
FIDRES 0.307637 Hz
AQ 1.6253552 sec
RG 8192
DW 12.400 usec
DE 6.50 usec
TE 299.8 K
D1 0.10000000 sec
d11 0.03000000 sec
TDD 40

----- CHANNEL f1 -----
NUC1 13C
P1 2.50 usec
PL1 0.00 dB
SFO1 125.7703648 MHz

----- CHANNEL f2 -----
CPDPRG2 waltz16
NUC2 1H
PCPD2 80.00 usec
PL12 11.50 dB
PL2 120.00 dB
SFO2 500.1325007 MHz

F2 - Processing parameters
SI 65536
SF 125.7577641 MHz
WDW EM
SSB 0
LB 1.00 Hz
GB 0
PC 1.40

Peak	?(F1) [ppm]	?(F1) [Hz]	Intensity	Annotation
1	166.7340	20969.0950	2.09	
2	154.1461	19385.0689	2.08	
3	149.5367	18805.4010	2.15	
4	143.2501	18014.8123	1.95	
5	138.1029	17367.4993	2.46	
6	128.9324	16214.2503	9.37	
7	128.9015	16210.3644	9.74	
8	128.0526	16103.6087	4.66	
9	127.4040	16022.0422	4.66	
10	126.6535	15927.6610	7.78	
11	126.4974	15908.0302	9.80	
12	104.8939	13191.2223	1.41	
13	77.4814	9743.8876	14.70	
14	77.2273	9711.9326	15.00	
15	76.9734	9680.0027	14.71	
16	54.0689	6799.5840	3.77	
17	51.5628	6484.4224	4.45	
18	46.2019	5810.2476	3.36	
19	16.7432	2105.5874	4.70	



230 220 210 200 190 180 170 160 150 140 130 120 110 100 90 80 70 60 50 40 30 20 10 0 ppm