

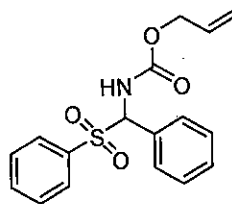
2008-021
 2nd crop after toluene flush
 nmr400b h-1

Current Data Parameters
 NAME 2008-021
 EXPRNO 8
 PROCNO 1

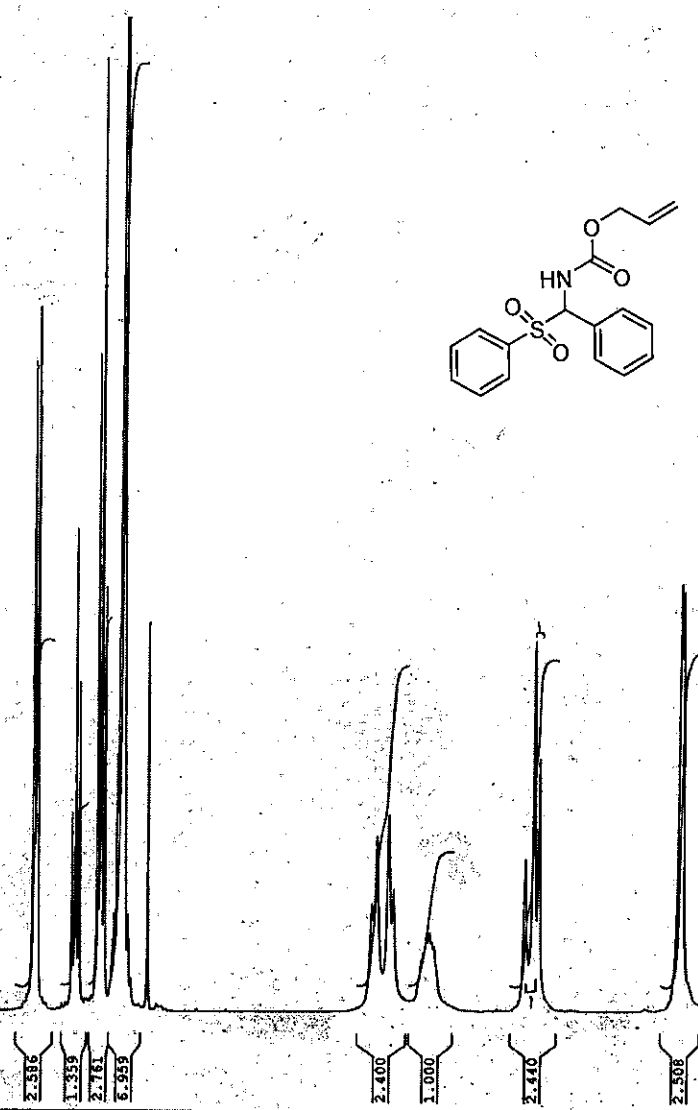
F2 - Acquisition Parameters
 Date 20081213
 Time 11.50
 INSTRUM spect
 PROBHD 5 mm QNP 1H/1
 PULPROG zg30
 TD 32768
 SOLVENT CDCl3
 NS 32
 DS 2
 SWH 6578.947 Hz
 FIDRES 0.200774 Hz
 AQ 2.4904180 sec
 RG 143.7
 DW 76.000 usec
 DE 7.00 usec
 TE 299.9 K
 D1 0.10000000 sec
 TDO 1

CHANNEL f1
 NUCL1 1H
 P1 11.50 usec
 PL1 6.00 dB
 SFO1 399.8724694 MHz

F2 - Processing parameters
 SI 16384
 SF 399.8700091 MHz
 WDW no
 SSB 0
 LB 0.00 Hz
 GB 0
 PC 11.00



Peak	?(F1) [ppm]	?(F1) [Hz]
33	4.4124	1764.3864
32	4.4252	1769.5048
31	5.1751	2069.3673
30	5.2017	2080.0038
29	5.2483	2098.6378
28	5.7390	2294.8540
27	5.7644	2305.0107
26	5.7791	2310.8888
25	5.9565	2381.8257
24	5.9829	2392.3823
23	6.0464	2417.7740
22	6.0724	2428.1706
21	7.2697	2906.9350
20	7.3582	2942.3235
19	7.3698	2946.9620
18	7.3737	2948.5215
17	7.3786	2950.4808
16	7.3895	2954.8394
15	7.3940	2956.6388
14	7.3974	2957.9984
13	7.4242	2968.7149
12	7.4344	2972.7936
11	7.4408	2975.3528
10	7.4477	2978.1119
9	7.4550	2981.0309
8	7.5001	2999.0651
7	7.5391	3014.6600
6	7.6356	3053.2474
5	7.6383	3054.3271
4	7.6541	3060.6450
3	7.6703	3067.1229
2	7.6728	3068.1226
1	7.8799	3150.9357



9.5 9.0 8.5 8.0 7.5 7.0 6.5 6.0 5.5 5.0 4.5 4.0 3.5 3.0 2.5 2.0 1.5 1.0 0.5 ppm