

Current Data Parameters
 NAME 2009-029
 EXPNO 1
 PROCNO 1

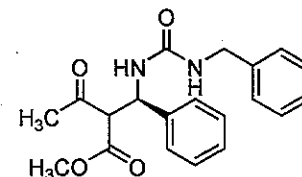
F2 - Acquisition Parameters
 Date 20090208
 Time 15.30
 INSTRUM spect
 PROBHD 5 mm QNP 1H/1
 PULPROG zg30
 TD 32768
 SOLVENT CDC13
 NS 32
 DS 2
 SWH 6578.947 Hz
 FIDRES 0.200774 Hz
 AQ 2.4904180 sec
 RG 80.6
 DW 76.000 usec
 DE 7.00 usec
 TE 300.0 K
 DI 0.10000000 sec
 TDO 1

CHANNEL f1
 NUC1 1H
 P1 11.50 usec
 PL1 6.00 dB
 SFO1 399.8724694 MHz

F2 - Processing parameters
 SI 16384
 SF 399.8700087 MHz
 WDW no
 SSB 0
 LB 0.00 Hz
 GB 0
 PC 1.00

Peak	τ (F1) (ppm)	τ (F1) (Hz)
1	7.3035	2920.4506
2	7.2995	2918.8511
3	7.2954	2917.2117
4	7.2814	2911.6135
5	7.2767	2909.7341
6	7.2705	2907.2549
7	7.2643	2904.7757
8	7.2596	2902.8963
9	7.2548	2900.9768
10	7.2459	2897.4181
11	7.2418	2895.7786
12	7.2318	2891.7799
13	7.2231	2888.3011
14	7.2132	2884.3423
15	7.2095	2882.8628
16	7.1945	2876.8648
17	7.1903	2875.1853
18	7.1740	2868.6674
19	6.4166	2565.8059
20	6.3921	2556.0091
21	6.1429	2456.3615
22	6.1193	2446.9245
23	5.8135	2324.6443
24	5.8015	2319.0459
25	5.7891	2314.0875
26	5.7770	2310.0490
27	5.6415	2255.8667
28	5.6226	2249.3091
29	5.6181	2248.5097
30	5.5992	2239.9522
31	5.4818	2192.0074
32	5.4673	2186.2093
33	5.4529	2180.4512
34	5.3987	2158.7782
35	5.3843	2153.0201
36	5.3699	2147.2620
37	5.2655	2105.5155
38	4.3227	1728.5181
39	4.3078	1722.5600
40	4.2931	1716.6819
41	4.2824	1712.4033
42	4.2672	1706.3253
43	4.2497	1699.3276
44	4.2446	1697.2882
45	4.2299	1691.4101
46	4.2068	1682.1732
47	4.1446	1657.3012
48	4.1268	1650.1836
49	4.1091	1643.1059
50	4.0911	1635.8082
51	4.0741	1629.1104
52	4.0620	1624.2720
53	4.0512	1619.9534
54	4.0248	1609.3968
55	4.0061	1601.9192
56	3.6001	1439.5720
57	3.5911	1435.9732
58	3.5279	1410.7014
59	3.5150	1405.5431
60	3.3903	1355.6793
61	2.3023	920.6207
62	2.2968	918.4214
63	2.2211	888.1513
64	2.1548	861.6399
65	2.1460	858.1210
66	2.0407	816.0147
67	1.8478	738.8798
68	1.2774	510.7939
69	1.2593	503.5563
70	1.2414	496.3966
71	0.9250	369.8998
72	0.9088	363.4019

2009-029
 fr 26-34
 penultimate
 nmr400b h-1



10.0 wt% EtOAc

EtOAc

EtOAc

EtOAc

1.000
 0.035
 0.033
 0.035
 0.034
 0.085
 0.022

0.227
 0.146

0.099
 0.187

0.166
 0.099
 0.118

0.120

10.0 9.5 9.0 8.5 8.0 7.5 7.0 6.5 6.0 5.5 5.0 4.5 4.0 3.5 3.0 2.5 2.0 1.5 1.0 0.5 0.0 ppm