

2009-030
recrystallized product
nmr500d h-1

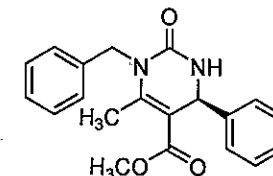
Current Data Parameters
NAME 2009-030
EXPNO 1
PROCNO 1

F2 - Acquisition Parameters
Date 20090207
Time 11.13
INSTRUM spect
PROBHD 5 mm PAK1 1H-
PULPROG zg30
TD 65536
SOLVENT CDCl3
NS 50
DS 4
SWH 13020.833 Hz
FIDRES 0.198682 Hz
AQ 2.5166707 sec
RG 128
DM 38.400 usec
DE 6.50 usec
TE 295.0 K
D1 0.1000000 sec
TDO 1

----- CHANNEL f1 -----
NUC1 1H
PI 8.60 usec
PL1 -1.00 dB
SFO1 500.330895 MHz

F2 - Processing parameters
SI 32768
SF 500.330094 MHz
WDW no
SSB 0
LB 0.00 Hz
GB 0
PC 1.00

Peak	?(F1) [ppm]	?(F1) [Hz]	Intensity	Annotation
1	7.2909	3647.8561	3.34	
2	7.2831	3643.9535	5.80	
3	7.2777	3641.2517	8.40	
4	7.2738	3639.3004	9.64	
5	7.2694	3637.0990	8.66	
6	7.2631	3633.9469	8.74	
7	7.2573	3631.0450	2.39	
8	7.2484	3626.5920	6.51	
9	7.2410	3622.8896	3.78	
10	7.2343	3619.5374	3.35	
11	7.2286	3616.6855	1.69	
12	7.2226	3613.6835	0.64	
13	7.1186	3561.6492	4.10	
14	7.1032	3553.9441	3.19	
15	5.9868	2995.3757	1.91	
16	5.4465	2725.0474	2.79	
17	5.4407	2722.1455	2.33	
18	5.2300	2616.7259	0.66	
19	5.1978	2600.6153	0.75	
20	4.8931	2448.1648	0.90	
21	4.8603	2431.7539	0.74	
22	3.6497	1826.0544	1.64	
23	3.6370	1819.7002	10.70	
24	3.6337	1818.0492	20.00	
25	2.4625	1232.0626	1.59	
26	2.4477	1224.6578	16.89	



10.0 9.5 9.0 8.5 8.0 7.5 7.0 6.5 6.0 5.5 5.0 4.5 4.0 3.5 3.0 2.5 2.0 1.5 1.0 0.5 0.0 ppm