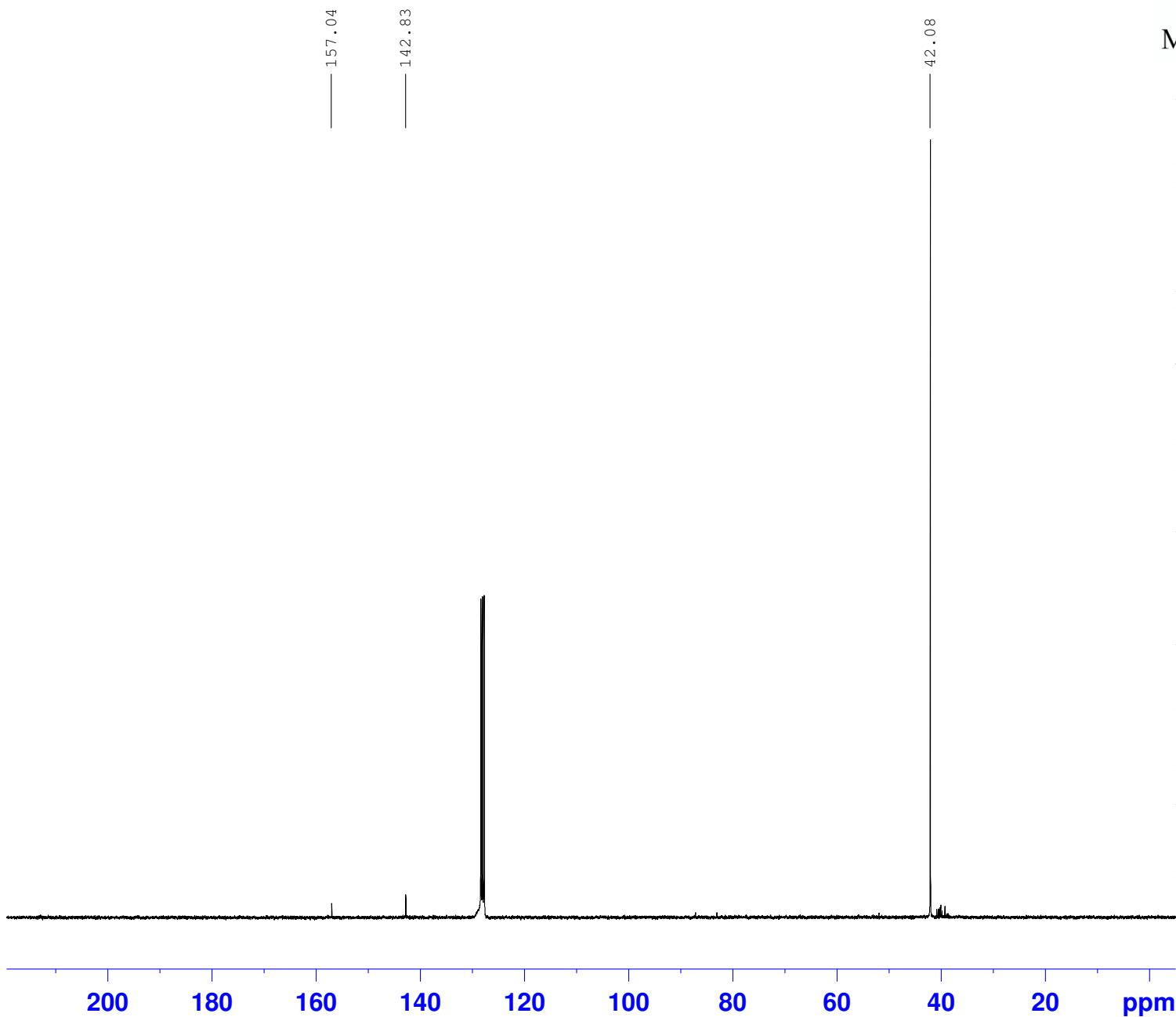
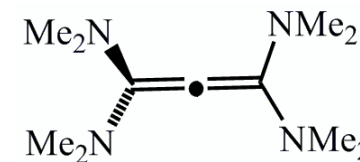


CD NB 149 52 dest 2 13C

Tetrakis(dimethylamino)allene



Current Data Parameters
NAME CD NB 149 52 dest 2 13C
EXPNO 1
PROCNO 1

F2 - Acquisition Parameters
Date_ 20081205
Time 19.27
INSTRUM spect
PROBHD 5 mm Multinucl
PULPROG zgpg
TD 32768
SOLVENT C6D6
NS 244
DS 2
SWH 17985.611 Hz
FIDRES 0.548877 Hz
AQ 0.9110004 sec
RG 32768
DW 27.800 usec
DE 6.00 usec
TE 300.0 K
D1 6.00000000 sec
d11 0.03000000 sec
DELTA 5.90000010 sec
TD0 1

==== CHANNEL f1 =====
NUC1 13C
P1 5.00 usec
PL1 0.00 dB
SFO1 75.4752953 MHz

==== CHANNEL f2 =====
CPDPRG2 waltz16
NUC2 1H
PCPD2 60.00 usec
PL2 4.00 dB
PL12 22.98 dB
PL13 120.00 dB
SFO2 300.1312005 MHz

F2 - Processing parameters
SI 32768
SF 75.4677272 MHz
WDW EM
SSB 0
LB 1.00 Hz
GB 0
PC 1.40