

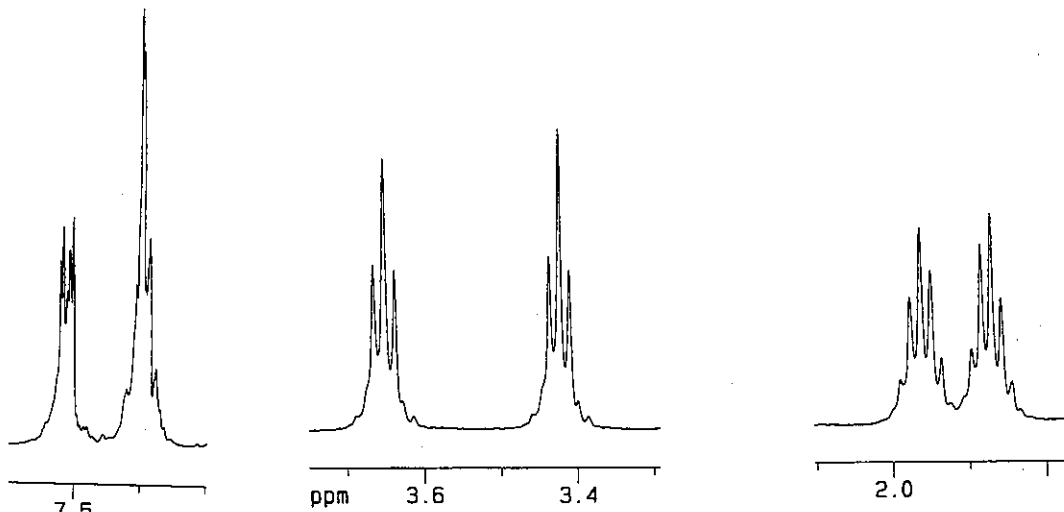
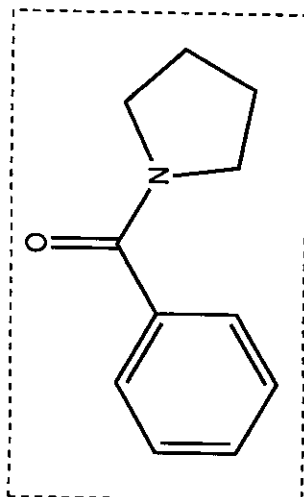
ppm

7.5232  
7.5194  
7.5132  
7.5093  
7.5042  
7.4076  
7.4017  
7.3989  
7.3937  
7.3875  
7.2666  
7.2645

3.6659  
3.6520  
3.6380  
3.4364  
3.4232  
3.4100

1.9770  
1.9635  
1.9494  
1.8845  
1.8714  
1.8581

0.0000



Integral

1.9922  
2.9872

1.9893  
2.0000

2.0172  
2.0634

ppm

8

6

4

2

0

Current Data Parameters  
NAME VB-OS-3207  
EXPNO 1  
PROCNO 1

F2 - Acquisition Parameters  
Date\_ 20090717  
Time 12.54  
INSTRUM spect  
PROBHD 5 mm GNP 1H  
PULPROG zg  
TD 48076  
SOLVENT CDCl3  
NS 8  
DS 0  
SWH 8012.820 Hz  
FIDRES 0.166670 Hz  
AQ 2.9999924 sec  
RG 256  
DW 62.400 usec  
DE 4.50 usec  
TE 300.0 K  
D1 3.00000000 sec

===== CHANNEL f1 =====  
NUC1 1H  
P1 9.50 usec  
PL1 0.00 dB  
SF01 500.1325006 MHz

F2 - Processing parameters  
SI 65536  
SF 500.1300112 MHz  
WDW EM  
SSB 0  
LB 0.30 Hz  
GB 0  
PC 1.00

1D NMR plot parameters  
CX 20.00 cm  
F1P 10.497 ppm  
F1 5250.00 Hz  
F2P -0.500 ppm  
F2 -250.00 Hz  
PPMCM 0.54986 ppm/cm  
HZCM 275.00003 Hz/cm