

2009-053  
 after vacuum drying  
 nmr400b h-1

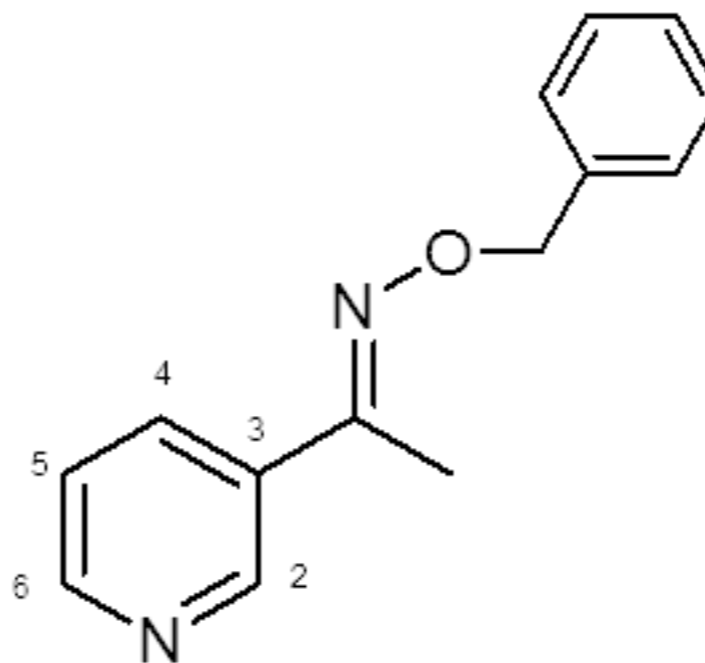
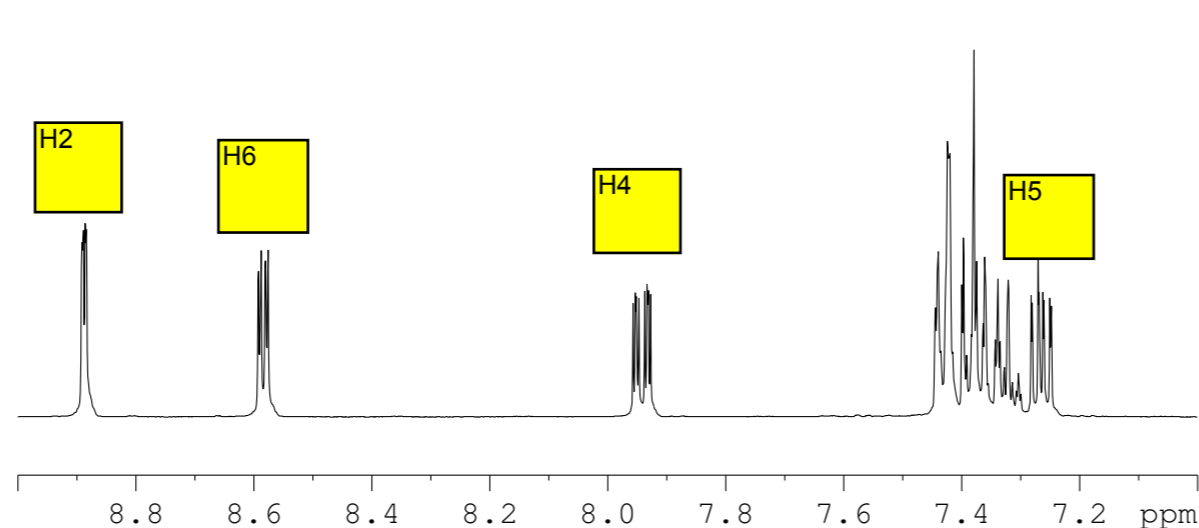
Current Data Parameters  
 NAME 2009-053  
 EXPNO 2  
 PROCNO 1

F2 - Acquisition Parameters  
 Date\_ 20090703  
 Time 10.26  
 INSTRUM spect  
 PROBHD 5 mm QNP 1H/1  
 PULPROG zg30  
 TD 32768  
 SOLVENT CDC13  
 NS 32  
 DS 2  
 SWH 6578.947 Hz  
 FIDRES 0.200774 Hz  
 AQ 2.4904180 sec  
 RG 80.6  
 DW 76.000 usec  
 DE 7.00 usec  
 TE 300.0 K  
 D1 0.10000000 sec  
 TD0 1

==== CHANNEL f1 =====  
 NUC1 1H  
 P1 11.50 usec  
 PL1 6.00 dB  
 SFO1 399.8724694 MHz

F2 - Processing parameters  
 SI 16384  
 SF 399.8700090 MHz  
 WDW no  
 SSB 0  
 LB 0.00 Hz  
 GB 0  
 PC 1.00

Peak	?(F1) [ppm]	?(F1) [Hz]	Inten:
1	7.5768	3029.7351	0.02
2	7.5557	3021.2978	0.01
3	7.5235	3008.4220	0.01
4	7.4713	2987.5488	0.02
5	7.4357	2973.3134	0.59
6	7.4156	2965.2760	0.59
7	7.3918	2955.7591	0.56
8	7.3836	2952.4802	0.76
9	7.3557	2941.3238	0.29
10	7.3430	2936.2455	0.69
11	7.3353	2933.1665	0.71
12	7.3281	2930.2874	0.45
13	7.3141	2924.6892	0.31
14	7.3073	2921.9701	0.23
15	7.3037	2920.5306	0.38
16	7.2999	2919.0111	0.20
17	7.2205	2887.2614	0.01
18	6.6601	2663.1742	0.01
19	5.4473	2178.2119	0.04
20	5.3686	2146.7421	0.01
21	5.3184	2126.6687	0.02
22	5.1325	2052.3328	0.03
23	5.0851	2033.3790	0.04
24	4.1571	1662.2996	0.03
25	4.1393	1655.1819	0.09
26	4.1214	1648.0243	0.10
27	4.1035	1640.8666	0.03
28	2.4384	975.0430	0.14
29	2.4292	971.3642	0.04
30	2.3786	951.1308	0.03
31	2.3283	931.0173	0.05
32	2.2969	918.4614	0.06
33	2.2855	913.9029	0.32
34	2.2301	891.7501	0.07
35	2.1148	845.6451	0.11
36	2.0463	818.2540	0.41
37	2.0378	814.8551	0.01



9.5 9.0 8.5 8.0 7.5 7.0 6.5 6.0 5.5 5.0 4.5 4.0 3.5 3.0 2.5 2.0 1.5 1.0 0.5 0.0 ppm