

oxime 2009-038B  
 crystallized from water  
 nmr400b h-1

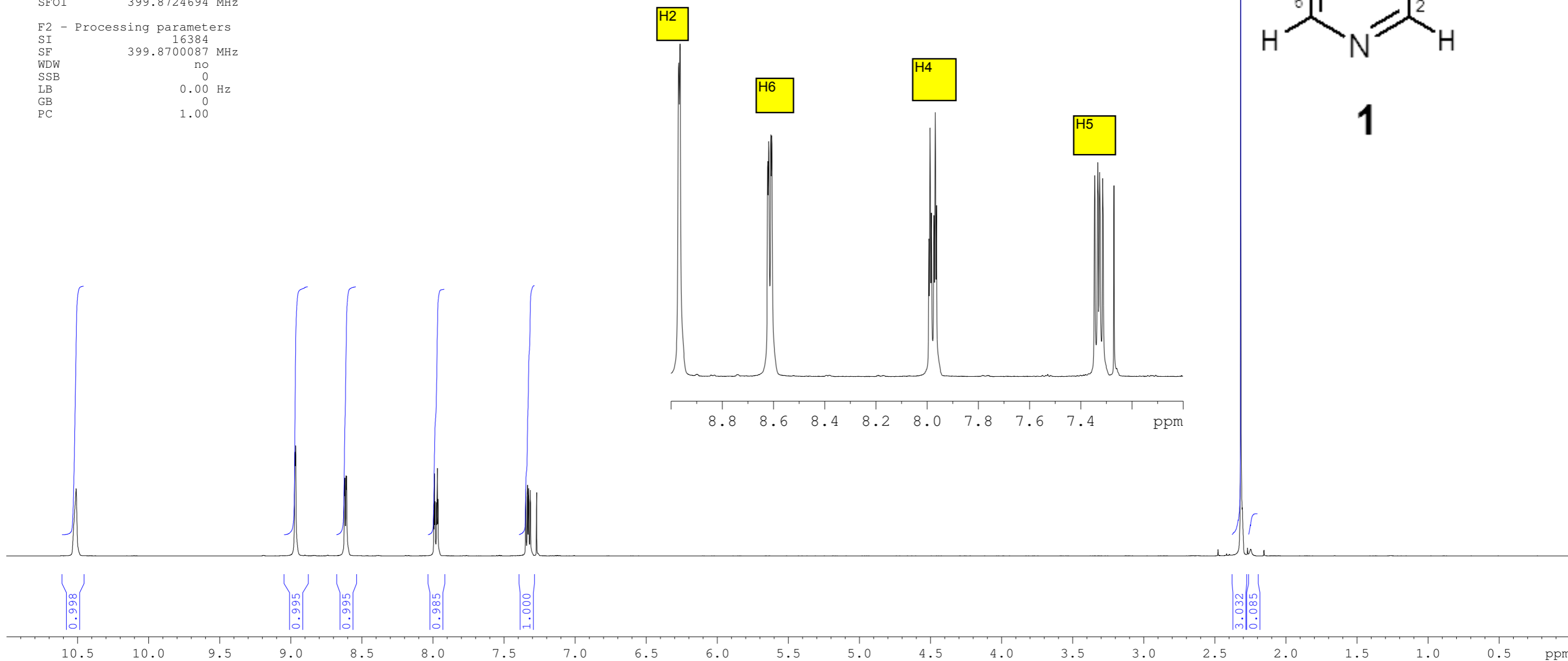
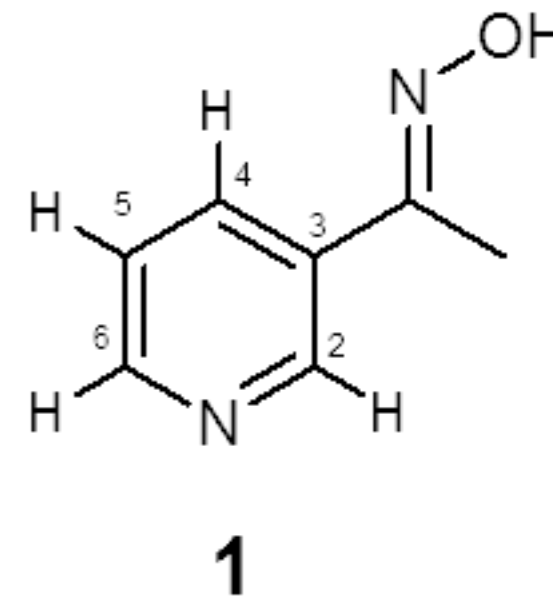
Current Data Parameters  
 NAME 2009-038  
 EXPNO 1  
 PROCNO 1

F2 - Acquisition Parameters  
 Date\_ 20090525  
 Time 13.07  
 INSTRUM spect  
 PROBHD 5 mm QNP 1H/1  
 PULPROG zg30  
 TD 32768  
 SOLVENT CDC13  
 NS 32  
 DS 2  
 SWH 6578.947 Hz  
 FIDRES 0.200774 Hz  
 AQ 2.4904180 sec  
 RG 256  
 DW 76.000 usec  
 DE 7.00 usec  
 TE 300.0 K  
 D1 0.10000000 sec  
 TD0 1

Peak	?(F1) [ppm]	?(F1) [Hz]	Intensity
1	10.5096	4202.4738	1.13
2	8.9706	3587.0739	1.76
3	8.9657	3585.1145	1.87
4	8.6223	3447.7992	1.22
5	8.6187	3446.3596	1.32
6	8.6102	3442.9607	1.37
7	8.6066	3441.5212	1.36
8	7.9940	3196.5608	0.78
9	7.9892	3194.6415	1.39
10	7.9845	3192.7621	0.93
11	7.9740	3188.5634	0.91
12	7.9691	3186.6041	1.48
13	7.9644	3184.7247	0.97
14	7.3465	2937.6450	1.13
15	7.3344	2932.8066	1.20
16	7.3265	2929.6476	1.14
17	7.3144	2924.8092	1.11
18	7.2705	2907.2549	1.09
19	2.3159	926.0590	20.00
20	2.3058	922.0203	0.82

==== CHANNEL f1 =====  
 NUC1 1H  
 P1 11.50 usec  
 PL1 6.00 dB  
 SFO1 399.8724694 MHz

F2 - Processing parameters  
 SI 16384  
 SF 399.8700087 MHz  
 WDW no  
 SSB 0  
 LB 0.00 Hz  
 GB 0  
 PC 1.00



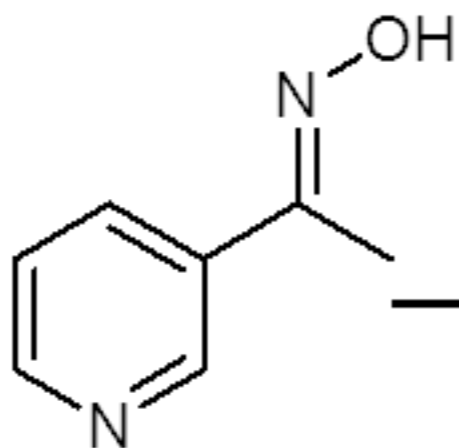
2009-037  
oxime crystallized from water  
nmr400b h-1

Current Data Parameters  
NAME 2009-037  
EXPNO 2  
PROCNO 1

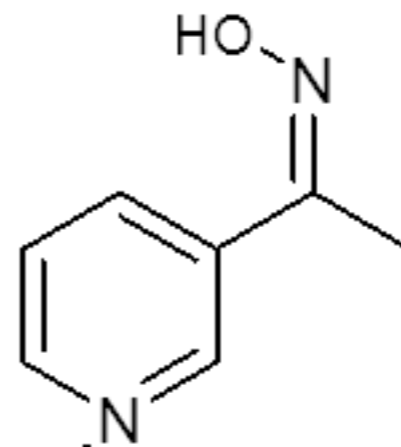
F2 - Acquisition Parameters  
Date\_ 20090525  
Time 7.57  
INSTRUM spect  
PROBHD 5 mm QNP 1H/1  
PULPROG zg30  
TD 32768  
SOLVENT CDC13  
NS 32  
DS 2  
SWH 6578.947 Hz  
FIDRES 0.200774 Hz  
AQ 2.4904180 sec  
RG 228.1  
DW 76.000 usec  
DE 7.00 usec  
TE 300.0 K  
D1 0.10000000 sec  
TD0 1

==== CHANNEL f1 =====  
NUC1 1H  
P1 11.50 usec  
PL1 6.00 dB  
SFO1 399.8724694 MHz

F2 - Processing parameters  
SI 16384  
SF 399.8700000 MHz  
WDW no  
SSB 0  
LB 0.00 Hz  
GB 0  
PC 1.00



**1**



13C Satellite

13C Satellite

