

2009-069C
fr 6-8
nmr400b c-13

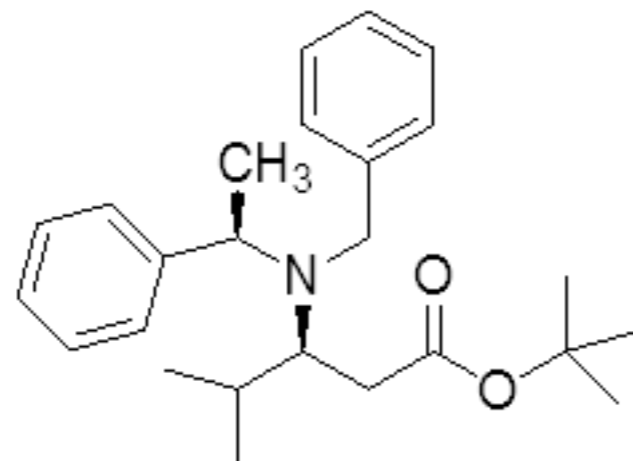
Current Data Parameters
NAME 2009-069
EXPNO 11
PROCNO 1

F2 - Acquisition Parameters
Date_ 20090808
Time_ 14.48
INSTRUM spect
PROBHD 5 mm QNP 1H/1
PULPROG zgdc
TD 65536
SOLVENT CDCl3
NS 2863
DS 4
SWH 26315.789 Hz
FIDRES 0.401547 Hz
AQ 1.2452340 sec
RG 8192
DW 19.000 usec
DE 7.00 usec
TE 300.0 K
D1 0.10000000 sec
d11 0.03000000 sec
TD0 40

==== CHANNEL f1 =====
NUC1 13C
P1 3.30 usec
PL1 6.00 dB
SFO1 100.5584512 MHz

==== CHANNEL f2 =====
CPDPRG2 waltz16
NUC2 1H
PCPD2 100.00 usec
PL2 120.00 dB
PL12 24.00 dB
SFO2 399.8719994 MHz

F2 - Processing parameters
SI 32768
SF 100.5473716 MHz
WDW EM
SSB 0
LB 1.00 Hz
GB 0
PC 1.40



172.65

142.14
141.80

128.51
128.45
128.16
127.11
126.78

80.07
77.54
77.43
77.22
76.91

58.19
57.97
51.42

36.48
33.05
28.23
21.28
20.38
19.83

230 220 210 200 190 180 170 160 150 140 130 120 110 100 90 80 70 60 50 40 30 20 10 0 ppm