

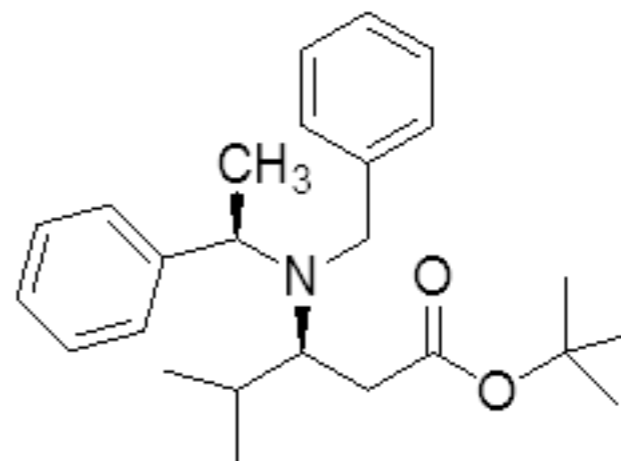
Current Data Parameters  
 NAME 2009-079  
 EXPNO 1  
 PROCNO 1

F2 - Acquisition Parameters  
 Date\_ 20090830  
 Time 14.33  
 INSTRUM spect  
 PROBHD 5 mm QNP 1H/1  
 PULPROG zg30  
 TD 32768  
 SOLVENT CDC13  
 NS 64  
 DS 2  
 SWH 6578.947 Hz  
 FIDRES 0.200774 Hz  
 AQ 2.4904180 sec  
 RG 128  
 DW 76.000 usec  
 DE 7.00 usec  
 TE 300.0 K  
 D1 0.10000000 sec  
 TD0 1

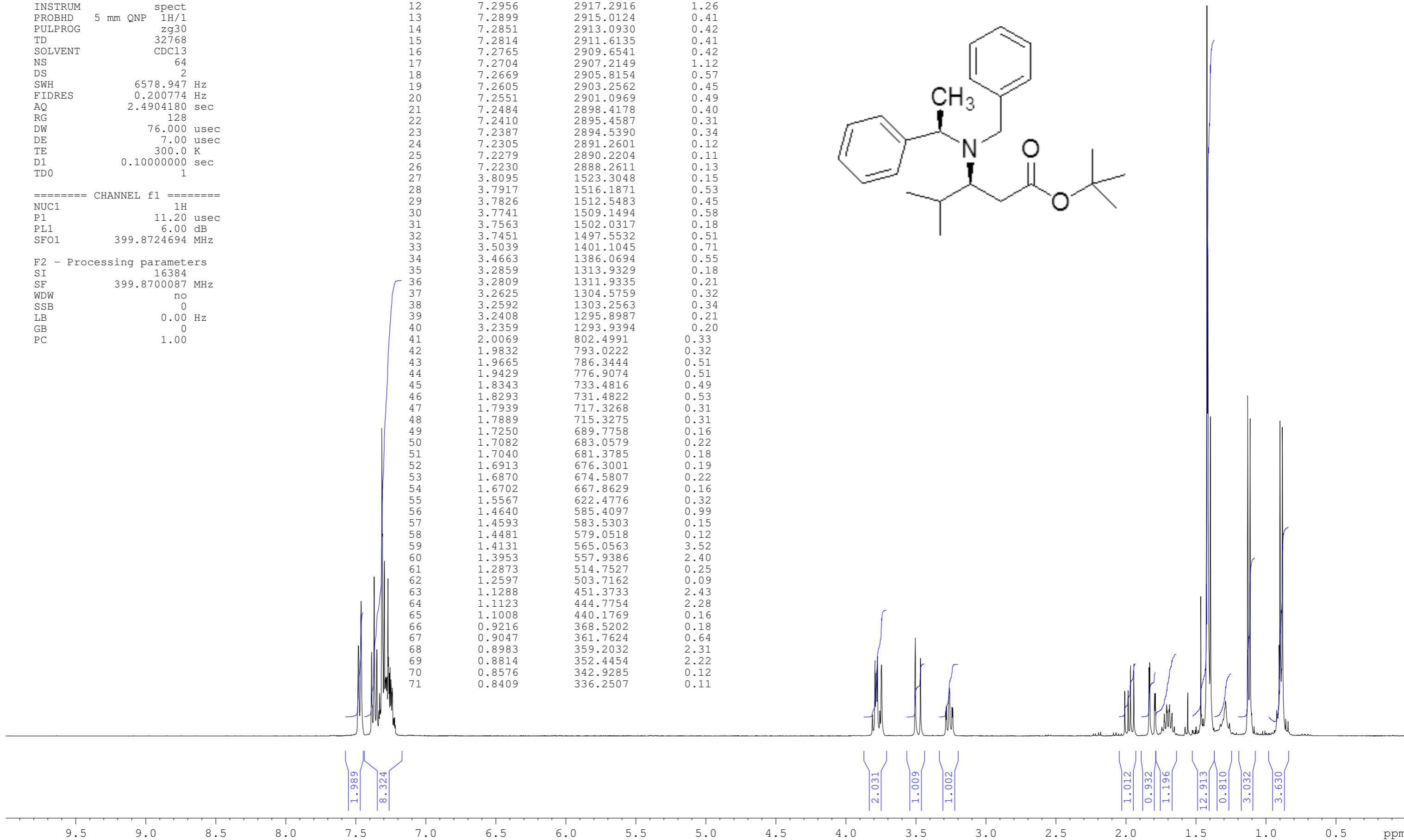
==== CHANNEL f1 =====  
 NUC1 1H  
 P1 11.20 usec  
 PL1 6.00 dB  
 SFO1 399.8724694 MHz

F2 - Processing parameters  
 SI 16384  
 SF 399.8700087 MHz  
 WDW no  
 SSB 0  
 LB 0.00 Hz  
 GB 0  
 PC 1.00

Peak	?(F1) [ppm]	?(F1) [Hz]	Intensity
1	7.4810	2991.4275	0.64
2	7.4622	2983.9100	0.96
3	7.3870	2953.8398	0.60
4	7.3828	2952.1603	0.22
5	7.3688	2946.5621	1.13
6	7.3495	2938.8446	0.61
7	7.3349	2933.0065	0.18
8	7.3295	2930.8472	0.30
9	7.3233	2928.3680	0.18
10	7.3133	2924.3693	2.20
11	7.3098	2922.9698	1.45
12	7.2956	2917.2916	1.26
13	7.2899	2915.0124	0.41
14	7.2851	2913.0930	0.42
15	7.2814	2911.6135	0.41
16	7.2765	2909.6541	0.42
17	7.2704	2907.2149	1.12
18	7.2669	2905.8154	0.57
19	7.2605	2903.2562	0.45
20	7.2551	2901.0969	0.49
21	7.2484	2898.4178	0.40
22	7.2410	2895.4587	0.31
23	7.2387	2894.5390	0.34
24	7.2305	2891.2601	0.12
25	7.2279	2890.2204	0.11
26	7.2230	2888.2611	0.13
27	3.8095	1523.3048	0.15
28	3.7917	1516.1871	0.53
29	3.7826	1512.5483	0.45
30	3.7741	1509.1494	0.58
31	3.7563	1502.0317	0.18
32	3.7451	1497.5532	0.51
33	3.5039	1401.1045	0.71
34	3.4663	1386.0694	0.55
35	3.2859	1313.9329	0.18
36	3.2809	1311.9335	0.21
37	3.2625	1304.5759	0.32
38	3.2592	1303.2563	0.34
39	3.2408	1295.8987	0.21
40	3.2359	1293.9394	0.20
41	2.0069	802.4991	0.33
42	1.9832	793.0222	0.32
43	1.9665	786.3444	0.51
44	1.9429	776.9074	0.51
45	1.8343	733.4816	0.49
46	1.8293	731.4822	0.53
47	1.7939	717.3268	0.31
48	1.7889	715.3275	0.31
49	1.7250	689.7758	0.16
50	1.7082	683.0579	0.22
51	1.7040	681.3785	0.18
52	1.6913	676.3001	0.19
53	1.6870	674.5807	0.22
54	1.6702	667.8629	0.16
55	1.5567	622.4776	0.32
56	1.4640	585.4097	0.99
57	1.4593	583.5303	0.15
58	1.4481	579.0518	0.12
59	1.4131	565.0563	3.52
60	1.3953	557.9386	2.40
61	1.2873	514.7527	0.25
62	1.2597	503.7162	0.09
63	1.1288	451.3733	2.43
64	1.1123	444.7754	2.28
65	1.1008	440.1769	0.16
66	0.9216	368.5202	0.18
67	0.9047	361.7624	0.64
68	0.8983	359.2032	2.31
69	0.8814	352.4454	2.22
70	0.8576	342.9285	0.12
71	0.8409	336.2507	0.11



2009-079  
 conjugate addition product  
 chromatographed  
 Fr 3-8  
 nmr400b h-1



Current Data Parameters  
NAME 2009-079  
EXPNO 1  
PROCNO 1

F2 - Acquisition Parameters  
Date\_ 20090830  
Time 14.33  
INSTRUM spect  
PROBHD 5 mm QNP 1H/1  
PULPROG zg30  
TD 32768  
SOLVENT CDCl3  
NS 64  
DS 2  
SWH 6578.947 Hz  
FIDRES 0.200774 Hz  
AQ 2.4904180 sec  
RG 128  
DW 76.000 usec  
DE 7.00 usec  
TE 300.0 K  
D1 0.10000000 sec  
TD0 1

==== CHANNEL f1 =====  
NUC1 1H  
P1 11.20 usec  
PL1 6.00 dB  
SFO1 399.8724694 MHz

F2 - Processing parameters  
SI 16384  
SF 399.8700087 MHz  
WDW no  
SSB 0  
LB 0.00 Hz  
GB 0  
PC 1.00

2009-079  
conjugate addition product  
chromatographed  
Fr 3-8  
nmr400b h-1

