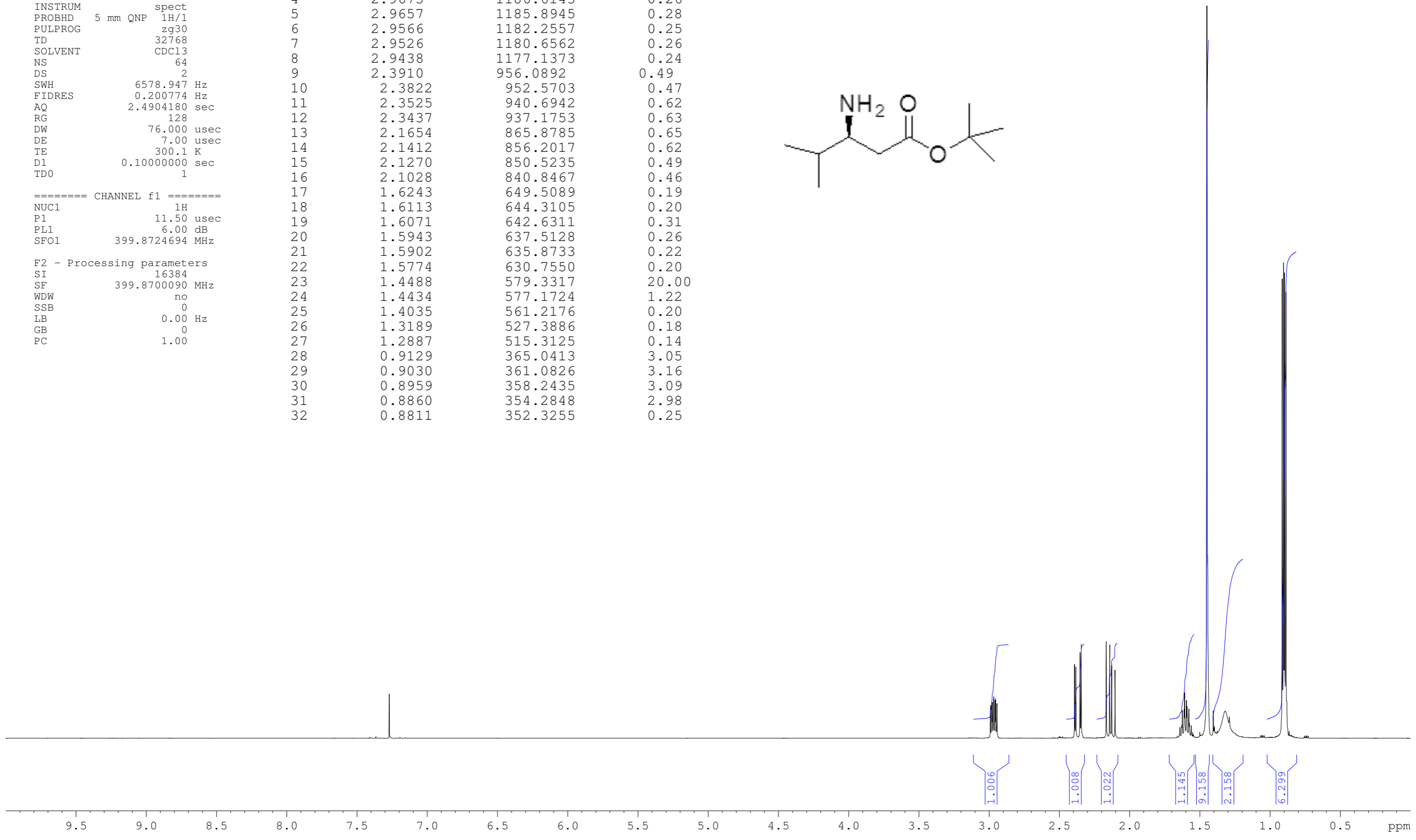
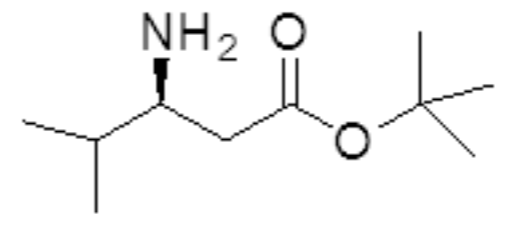


2009-070
t-Bu ester amine
nmr400b h-1

Current Data Parameters
 NAME 2009-070
 EXPNO 6
 PROCNO 1
 F2 - Acquisition Parameters
 Date_ 20090808
 Time 13.19
 INSTRUM spect
 PROBHD 5 mm QNP 1H/1
 PULPROG zg30
 TD 32768
 SOLVENT CDC13
 NS 64
 DS 2
 SWH 6578.947 Hz
 FIDRES 0.200774 Hz
 AQ 2.4904180 sec
 RG 128
 DW 76.000 usec
 DE 7.00 usec
 TE 300.1 K
 D1 0.10000000 sec
 TD0 1
 ===== CHANNEL f1 =====
 NUC1 1H
 P1 11.50 usec
 PL1 6.00 dB
 SFO1 399.8724694 MHz
 F2 - Processing parameters
 SI 16384
 SF 399.8700090 MHz
 WDW no
 SSB 0
 LB 0.00 Hz
 GB 0
 PC 1.00

Peak	?(F1) [ppm]	?(F1) [Hz]	Intensity
1	2.9897	1195.4914	0.22
2	2.9808	1191.9325	0.24
3	2.9768	1190.3330	0.24
4	2.9675	1186.6143	0.26
5	2.9657	1185.8945	0.28
6	2.9566	1182.2557	0.25
7	2.9526	1180.6562	0.26
8	2.9438	1177.1373	0.24
9	2.3910	956.0892	0.49
10	2.3822	952.5703	0.47
11	2.3525	940.6942	0.62
12	2.3437	937.1753	0.63
13	2.1654	865.8785	0.65
14	2.1412	856.2017	0.62
15	2.1270	850.5235	0.49
16	2.1028	840.8467	0.46
17	1.6243	649.5089	0.19
18	1.6113	644.3105	0.20
19	1.6071	642.6311	0.31
20	1.5943	637.5128	0.26
21	1.5902	635.8733	0.22
22	1.5774	630.7550	0.20
23	1.4488	579.3317	20.00
24	1.4434	577.1724	1.22
25	1.4035	561.2176	0.20
26	1.3189	527.3886	0.18
27	1.2887	515.3125	0.14
28	0.9129	365.0413	3.05
29	0.9030	361.0826	3.16
30	0.8959	358.2435	3.09
31	0.8860	354.2848	2.98
32	0.8811	352.3255	0.25

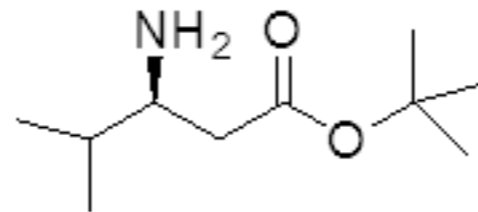


Current Data Parameters
NAME 2009-070
EXPNO 6
PROCNO 1

F2 - Acquisition Parameters
Date_ 20090808
Time 13.19
INSTRUM spect
PROBHD 5 mm QNP 1H/1
PULPROG zg30
TD 32768
SOLVENT CDCl3
NS 64
DS 2
SWH 6578.947 Hz
FIDRES 0.200774 Hz
AQ 2.4904180 sec
RG 128
DW 76.000 usec
DE 7.00 usec
TE 300.1 K
D1 0.10000000 sec
TD0 1

==== CHANNEL f1 =====
NUC1 1H
P1 11.50 usec
PL1 6.00 dB
SFO1 399.8724694 MHz

F2 - Processing parameters
SI 16384
SF 399.8700090 MHz
WDW no
SSB 0
LB 0.00 Hz
GB 0
PC 1.00



2009-070
t-Bu ester amine
nmr400b h-1

