

Current Data Parameters
 NAME 2009-067
 EXPNO 3
 PROCNO 1

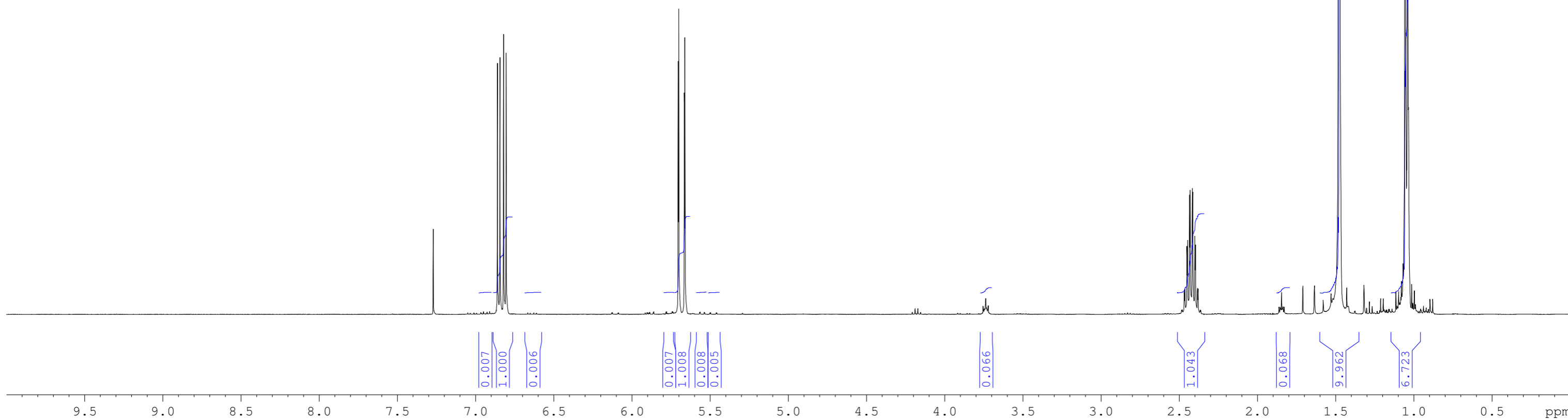
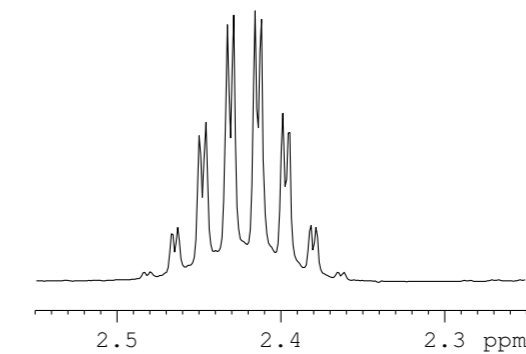
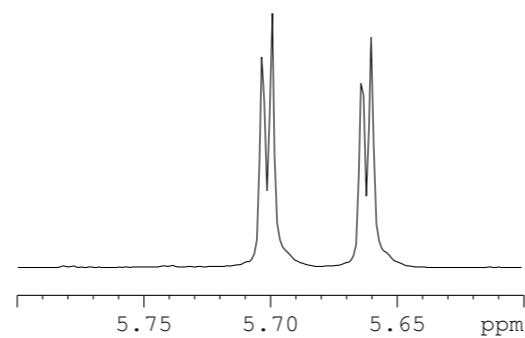
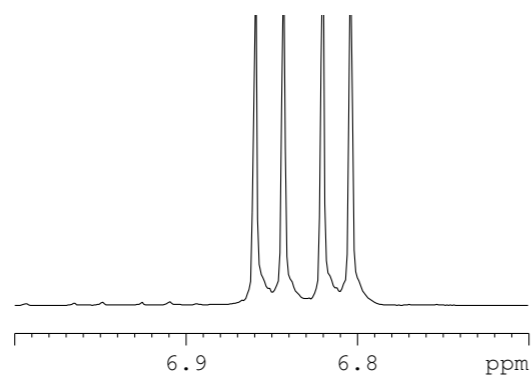
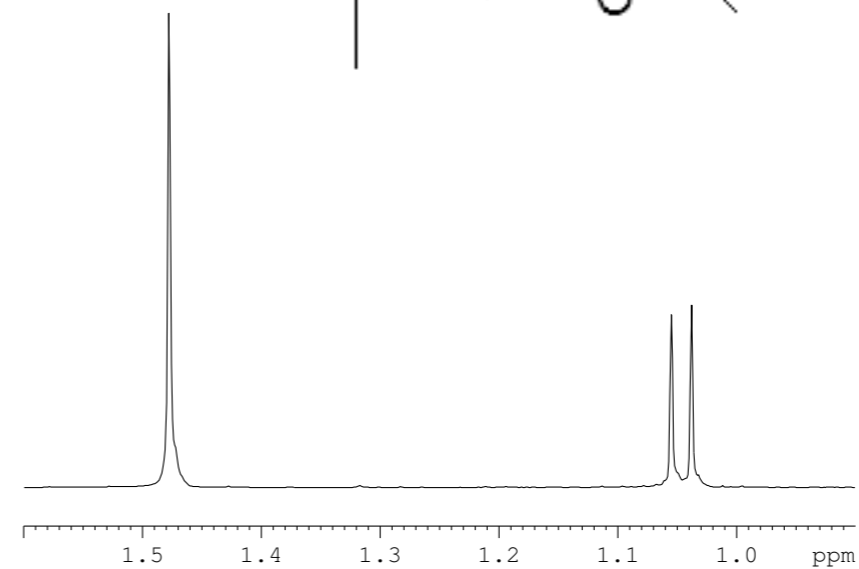
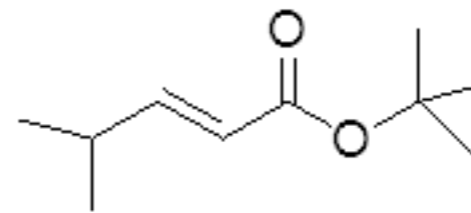
F2 - Acquisition Parameters
 Date_ 20090801
 Time 10.43
 INSTRUM spect
 PROBHD 5 mm QNP 1H/1
 PULPROG zg30
 TD 32768
 SOLVENT CDCl3
 NS 64
 DS 2
 SWH 6578.947 Hz
 FIDRES 0.200774 Hz
 AQ 2.4904180 sec
 RG 80.6
 DW 76.000 usec
 DE 7.00 usec
 TE 300.1 K
 D1 0.10000000 sec
 TD0 1

==== CHANNEL f1 =====
 NUC1 1H
 P1 11.50 usec
 PL1 6.00 dB
 SFO1 399.8724694 MHz

F2 - Processing parameters
 SI 16384
 SF 399.8700087 MHz
 WDW no
 SSB 0
 LB 0.00 Hz
 GB 0
 PC 1.00

Peak	? (F1) [ppm]	? (F1) [Hz]	Intensity
1	7.2705	2907.2549	1.07
2	6.8599	2743.0683	3.21
3	6.8436	2736.5504	3.22
4	6.8207	2727.3934	3.56
5	6.8044	2720.8755	3.27
6	5.7036	2280.6986	3.20
7	5.6999	2279.2191	3.83
8	5.6643	2264.9837	2.88
9	5.6607	2263.5442	3.46
10	2.4500	979.6815	0.86
11	2.4463	978.2020	0.93
12	2.4331	972.9237	1.49
13	2.4294	971.4442	1.57
14	2.4162	966.1659	1.58
15	2.4124	964.6464	1.57
16	2.3992	959.3681	0.98
17	2.3955	957.8886	0.92
18	1.4780	591.0079	100.00
19	1.0678	426.9812	0.64
20	1.0553	421.9828	36.36
21	1.0383	415.1850	38.12
22	1.0328	412.9857	2.65

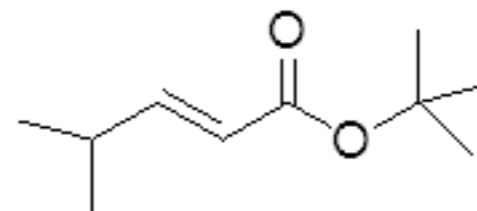
2009-067
 fr 3-5
 nmr400b h-1



2009-076
fr 2-4
nmr500d h-1

Current Data Parameters
NAME 2009-076
EXPNO 4
PROCNO 1

F2 - Acquisition Parameters
Date_ 20090822
Time 14.07
INSTRUM spect
PROBHD 5 mm PABBI 1H-
PULPROG zg30
TD 65536
SOLVENT CDC13
NS 32
DS 4
SWH 13020.833 Hz
FIDRES 0.198682 Hz
AQ 2.5166323 sec
RG 64
DW 38.400 usec
DE 6.50 usec
TE 295.0 K
D1 0.10000000 sec
TD0 1



Peak	?(F1) [ppm]	?(F1) [Hz]	Intensity
1	5.9360	2969.9589	0.12
2	5.9162	2960.0523	0.13
3	5.9129	2958.4013	0.14
4	5.8932	2948.5448	0.14
5	5.8811	2942.4908	0.11
6	5.8782	2941.0398	0.12
7	5.8497	2926.7804	0.10
8	5.8468	2925.3294	0.10

Peak	?(F1) [ppm]	?(F1) [Hz]	Intensity
1	5.5863	2794.9935	0.17
2	5.5611	2782.3852	0.17
3	5.5564	2780.0336	0.11
4	5.5278	2765.7242	0.11
5	5.5250	2764.3232	0.09

==== CHANNEL f1 =====
NUC1 1H
P1 8.60 usec
PL1 -1.00 dB
SFO1 500.3330895 MHz

F2 - Processing parameters
SI 32768
SF 500.3300000 MHz
WDW no
SSB 0
LB 0.00 Hz
GB 0
PC 1.00

