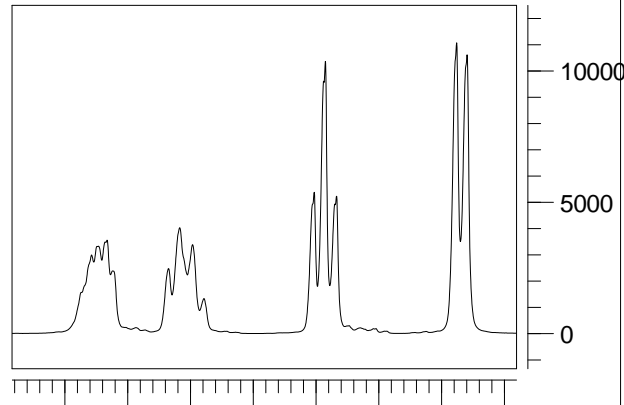
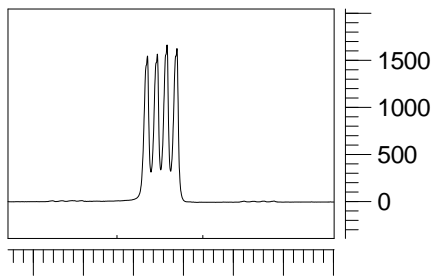


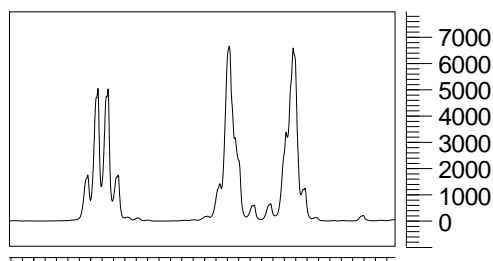
4.900 4.850 4.800 4.750
ppm (f1)



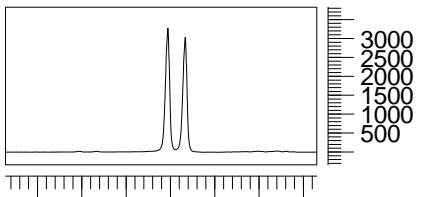
1.70 1.60 1.50 1.40 1.30 1.20 1.10
ppm (f1)



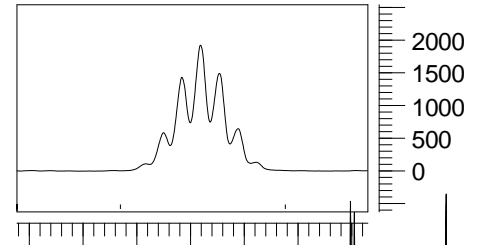
7.107.006.906.806.706.60
ppm (f1)



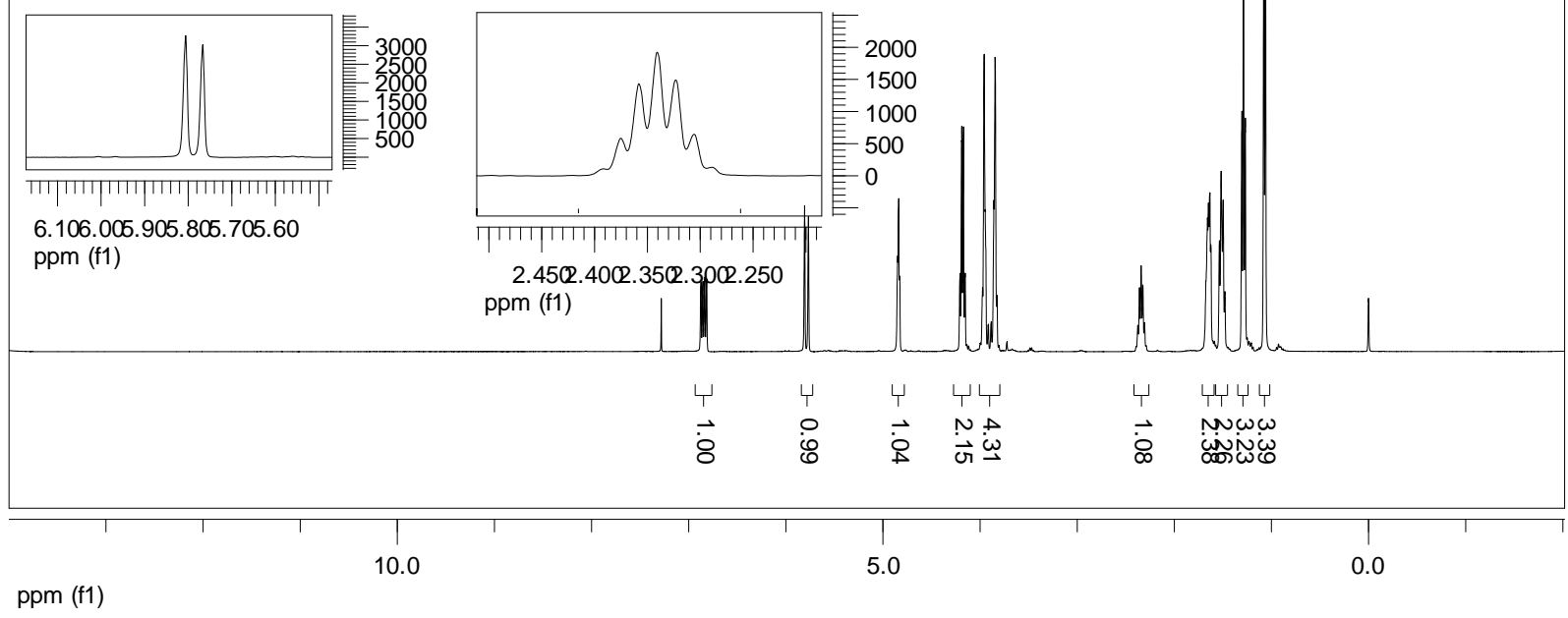
4.30 4.20 4.10 4.00 3.90 3.80
ppm (f1)



6.106.005.905.805.705.60
ppm (f1)



2.45 2.40 2.35 2.30 2.25
ppm (f1)



ppm (f1)