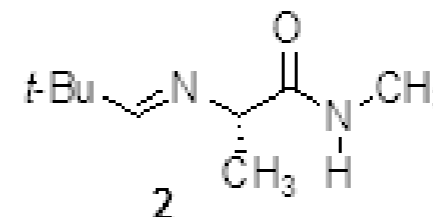


2010-143  
imine after vacuum drying  
nmr400b c-13

Current Data Parameters  
 NAME 2010-143  
 EXPNO 4  
 PROCNO 16  
 F2 - Acquisition Parameters  
 Date\_ 20100724  
 Time 10.46  
 INSTRUM spect  
 PROBHD 5 mm QNP 1H/1  
 PULPROG zgdc  
 TD 65536  
 SOLVENT CDCl3  
 NS 2990  
 DS 4  
 SWH 26315.789 Hz  
 FIDRES 0.401547 Hz  
 AQ 1.2452340 sec  
 RG 8192  
 DW 19.000 usec  
 DE 7.00 usec  
 TE 300.0 K  
 D1 0.10000000 sec  
 d11 0.03000000 sec  
 TD0 40

Peak	?(F1) [ppm]	?(F1) [Hz]	Intensity
1	174.7988	17575.5598	0.95
2	173.1683	17411.6173	3.65
3	77.5538	7797.8307	7.20
4	77.2357	7765.8466	7.39
5	76.9175	7733.8524	7.25
6	67.7379	6810.8678	3.62
7	36.5891	3678.9378	1.53
8	26.9085	2705.5789	15.00
9	26.0384	2618.0927	2.76
10	21.5512	2166.9165	4.37



==== CHANNEL f1 =====  
 NUC1 13C  
 P1 4.00 usec  
 PL1 0.00 dB  
 SFO1 100.5584512 MHz

==== CHANNEL f2 =====  
 CPDPRG2 waltz16  
 NUC2 1H  
 PCPD2 100.00 usec  
 PL2 120.00 dB  
 PL12 24.50 dB  
 SFO2 399.8719994 MHz

F2 - Processing parameters  
 SI 32768  
 SF 100.5473710 MHz  
 WDW EM  
 SSB 0  
 LB 1.00 Hz  
 GB 0  
 PC 1.40

