

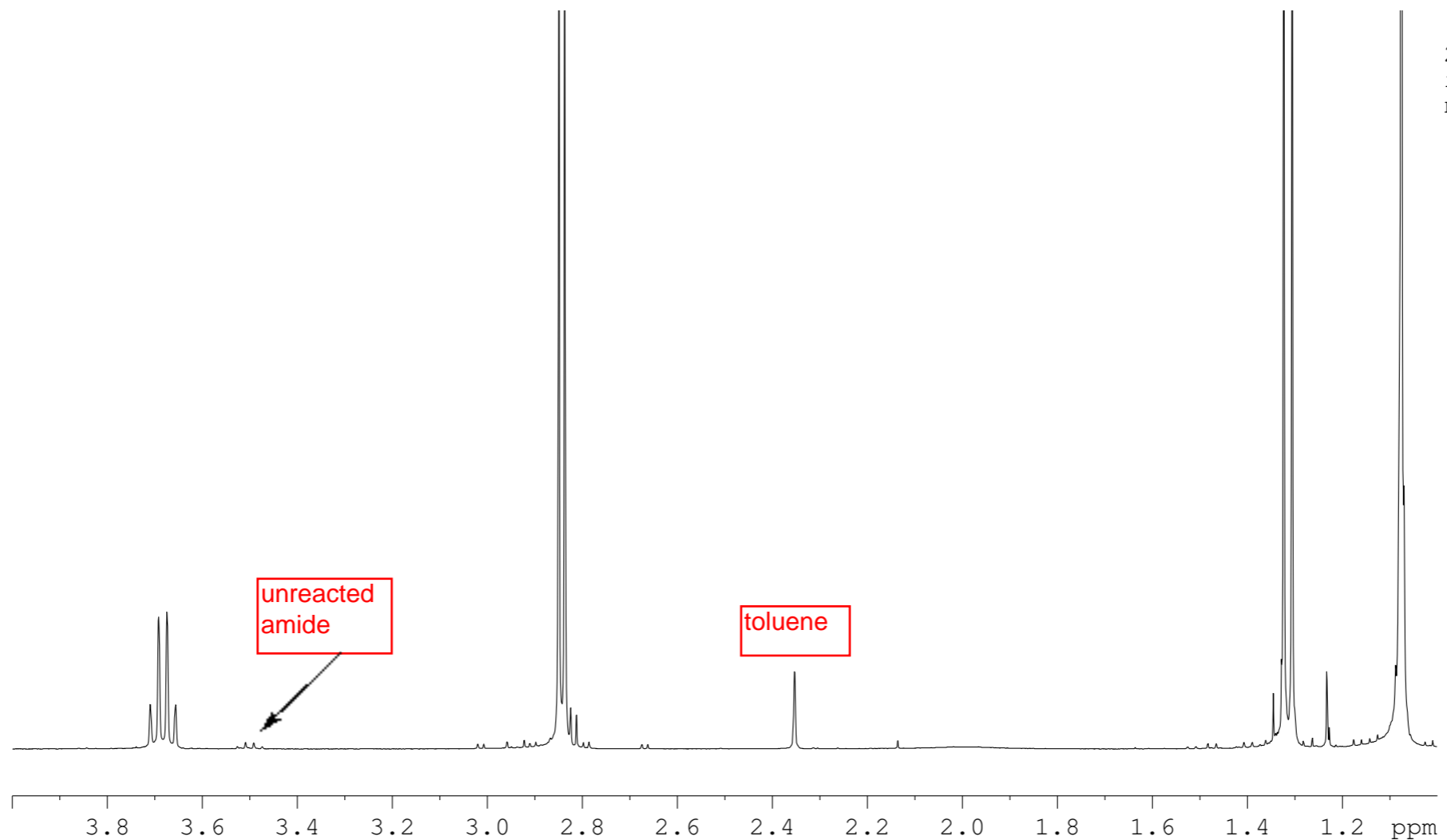
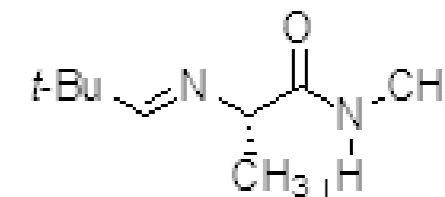
Current Data Parameters
NAME 2010-143
EXPNO 5
PROCNO 1

F2 - Acquisition Parameters
Date_ 20100724
Time 10.39
INSTRUM spect
PROBHD 5 mm QNP 1H/1
PULPROG zg30
TD 32768
SOLVENT CDCl3
NS 70
DS 2
SWH 6578.947 Hz
FIDRES 0.200774 Hz
AQ 2.4904180 sec
RG 287.4
DW 76.000 usec
DE 7.00 usec
TE 300.0 K
D1 0.10000000 sec
TD0 1

==== CHANNEL f1 =====
NUC1 1H
P1 11.20 usec
PL1 6.00 dB
SFO1 399.8724694 MHz

F2 - Processing parameters
SI 16384
SF 399.8700086 MHz
WDW no
SSB 0
LB 0.00 Hz
GB 0
PC 1.00

2010-143
imine vacuum dried
nmr400b h-1



Peak	? (F1) [ppm]	? (F1) [Hz]	Intensity
1	7.5220	3007.8222	1.38
2	7.2707	2907.3349	0.55
3	3.7095	1483.3178	0.14
4	3.6919	1476.2801	0.41
5	3.6743	1469.2424	0.42
6	3.6567	1462.2047	0.14
7	2.8497	1139.5096	2.67
8	2.8372	1134.5112	2.72
9	2.8250	1129.6328	0.13
10	2.8123	1124.5544	0.11
11	2.3535	941.0941	0.24
12	1.3457	538.1051	0.17
13	1.3283	531.1473	0.29
14	1.3237	529.3079	3.27
15	1.3062	522.3102	2.99
16	1.2329	492.9997	0.25
17	1.0882	435.1385	0.27
18	1.0763	430.3801	20.00
19	1.0709	428.2208	0.83
20	0.9711	388.3138	0.10

