

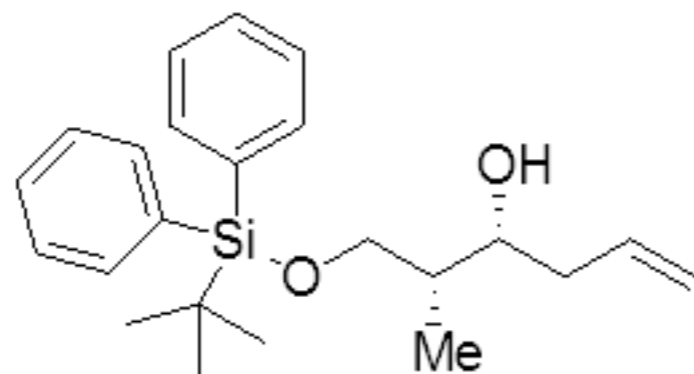
Current Data Parameters
 NAME 32077-131D
 EXPNO 30
 PROCNO 1

F2 - Acquisition Parameters
 Date_ 20100926
 Time_ 11.30
 INSTRUM spect
 PROBHD 5 mm QNP 1H/13
 PULPROG zgdc
 TD 131072
 SOLVENT CDCl3
 NS 3803
 DS 4
 SWH 40322.582 Hz
 FIDRES 0.307637 Hz
 AQ 1.6253552 sec
 RG 8192
 DW 12.400 usec
 DE 6.50 usec
 TE 300.2 K
 D1 0.10000000 sec
 d11 0.03000000 sec
 TD0 40

==== CHANNEL f1 =====
 NUC1 13C
 P1 2.50 usec
 PL1 0.00 dB
 SFO1 125.7703648 MHz

==== CHANNEL f2 =====
 CPDPRG2 waltz16
 NUC2 1H
 PCPD2 80.00 usec
 PL12 11.50 dB
 PL2 120.00 dB
 SFO2 500.1325007 MHz

F2 - Processing parameters
 SI 65536
 SF 125.7577633 MHz
 WDW EM
 SSB 0
 LB 1.00 Hz
 GB 0
 PC 1.40



135.89
 135.81
 135.79
 133.39
 133.24
 130.04
 130.00
 127.97

117.33

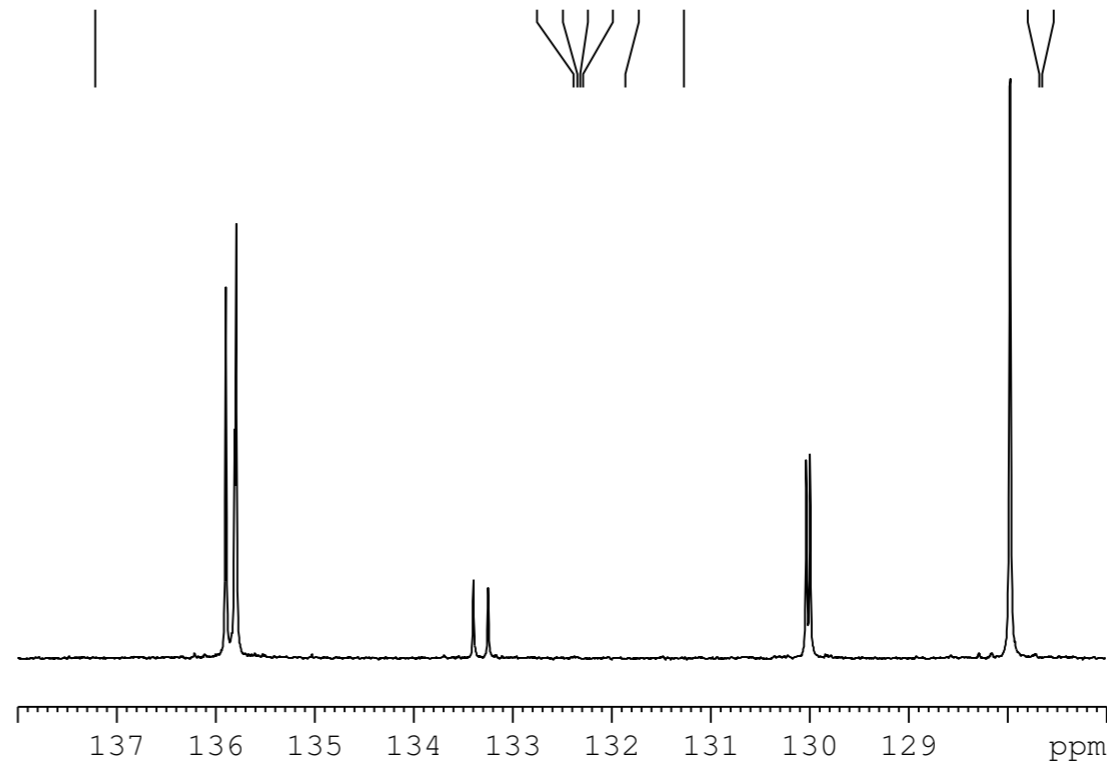
77.81
 77.49
 77.24
 76.98
 73.51
 68.69

39.27
 39.07

27.09

19.40

10.53



Peak	?(F1) [ppm]	?(F1) [Hz]	Intensity	Annotation
1	135.8911	17089.3608	9.55	
2	135.8053	17078.5708	5.70	
3	135.7900	17076.6467	10.86	
4	133.3932	16775.2305	1.88	
5	133.2425	16756.2788	1.73	
6	130.0351	16352.9233	4.99	
7	129.9964	16348.0565	5.09	
8	127.9738	16093.6989	15.00	
9	117.3316	14755.3596	5.31	
10	77.8102	9785.2367	0.08	
11	77.4905	9745.0320	10.61	
12	77.2364	9713.0769	10.81	
13	76.9823	9681.1219	10.60	
14	73.5116	9244.6544	5.06	
15	68.6877	8638.0115	4.99	
16	39.2701	4938.5199	5.25	
17	39.0711	4913.4941	4.31	
18	27.0887	3406.6143	13.97	
19	19.3969	2439.3108	3.69	
20	10.5305	1324.2921	4.80	

