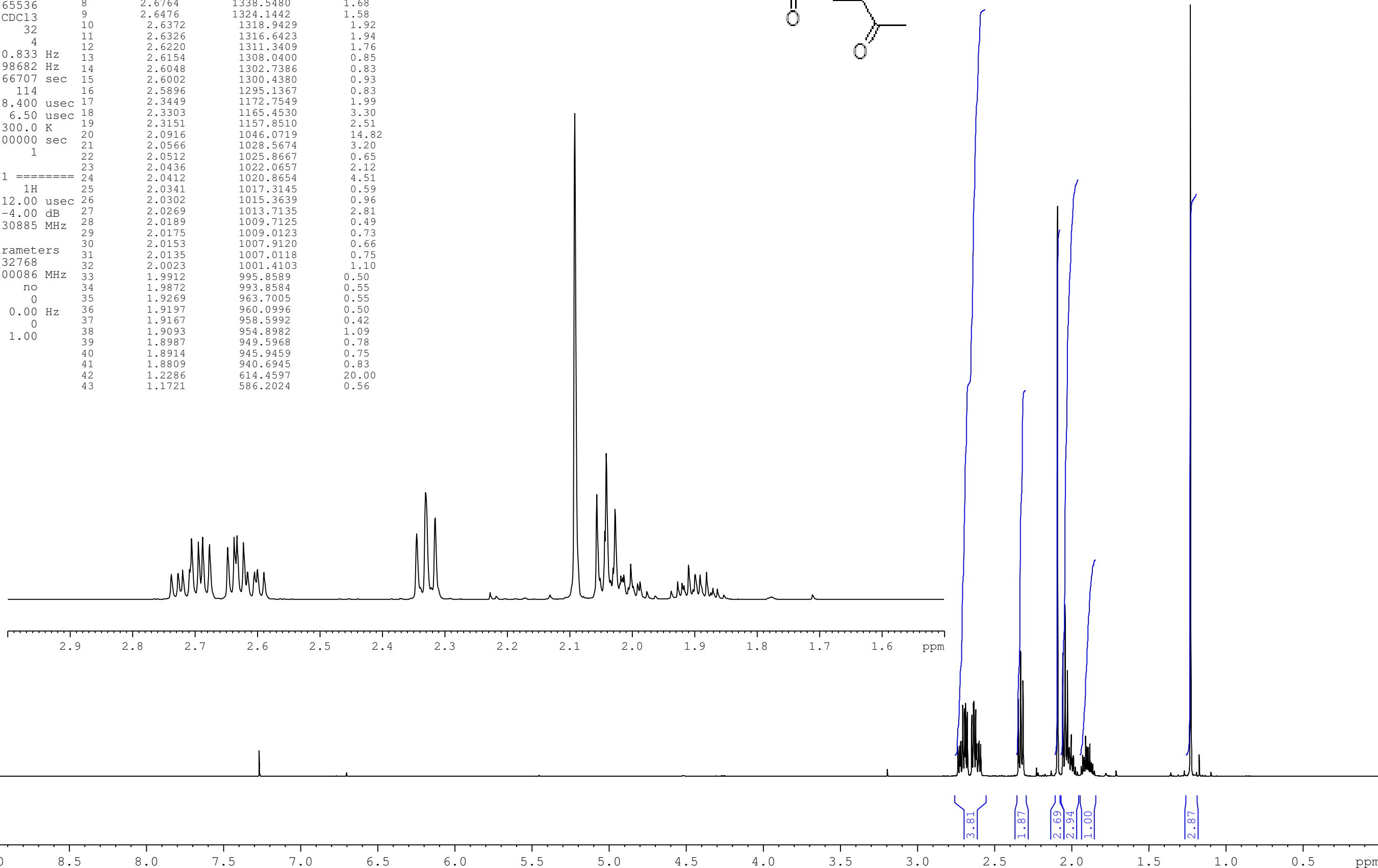
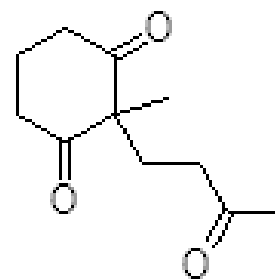


32077-138
 product after concentration
 nmr500c h-1

Current Data Parameters
 NAME 32077-138
 EXPNO 2
 PROCNO 1

	Peak	?(F1) [ppm]	?(F1) [Hz]	Intensity	Annotation
F2 - Acquisition Parameters	1	2.7375	1369.1059	0.75	
Date_	2	2.7267	1363.7045	0.80	
Time	3	2.7199	1360.3036	0.90	
INSTRUM	4	2.7087	1354.7022	0.93	
PROBHD	5	2.7055	1353.1017	1.87	
PULPROG	6	2.6944	1347.5503	1.79	
TD	7	2.6875	1344.0994	1.90	
SOLVENT	8	2.6764	1338.5480	1.68	
NS	9	2.6476	1324.1442	1.58	
DS	10	2.6372	1318.9429	1.92	
SWH	11	2.6326	1316.6423	1.94	
FIDRES	12	2.6220	1311.3409	1.76	
AQ	13	2.6154	1308.0400	0.85	
RG	14	2.6048	1302.7386	0.83	
DW	15	2.6002	1300.4380	0.93	
DE	16	2.5896	1295.1367	0.83	
TE	17	2.5449	1172.7549	1.99	
D1	18	2.3303	1165.4530	3.30	
TD0	19	2.3151	1157.8510	2.51	
==== CHANNEL f1 =====	20	2.0916	1046.0719	14.82	
NUC1	21	2.0566	1028.5674	3.20	
P1	22	2.0512	1025.8667	0.65	
PL1	23	2.0436	1022.0657	2.12	
SFO1	24	2.0412	1020.8654	4.51	
	25	2.0341	1017.3145	0.59	
	26	2.0302	1015.3639	0.96	
	27	2.0269	1013.7135	2.81	
	28	2.0189	1009.7125	0.49	
	29	2.0175	1009.0123	0.73	
	30	2.0153	1007.9120	0.66	
	31	2.0135	1007.0118	0.75	
	32	2.0023	1001.4103	1.10	
	33	1.9912	995.8589	0.50	
	34	1.9872	993.8584	0.55	
	35	1.9269	963.7005	0.55	
	36	1.9197	960.0996	0.50	
	37	1.9167	958.5992	0.42	
	38	1.9093	954.8982	1.09	
	39	1.8987	949.5968	0.78	
	40	1.8914	945.9459	0.75	
	41	1.8809	940.6945	0.83	
	42	1.2286	614.4597	20.00	
	43	1.1721	586.2024	0.56	



9.5 9.0 8.5 8.0 7.5 7.0 6.5 6.0 5.5 5.0 4.5 4.0 3.5 3.0 2.5 2.0 1.5 1.0 0.5 ppm