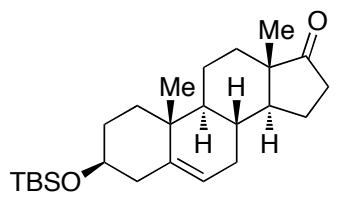
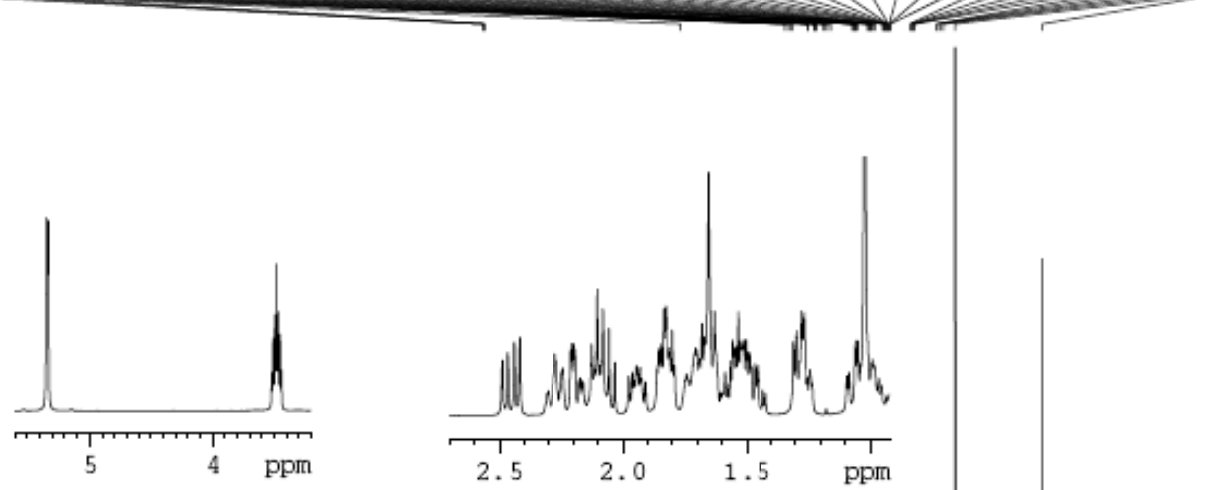


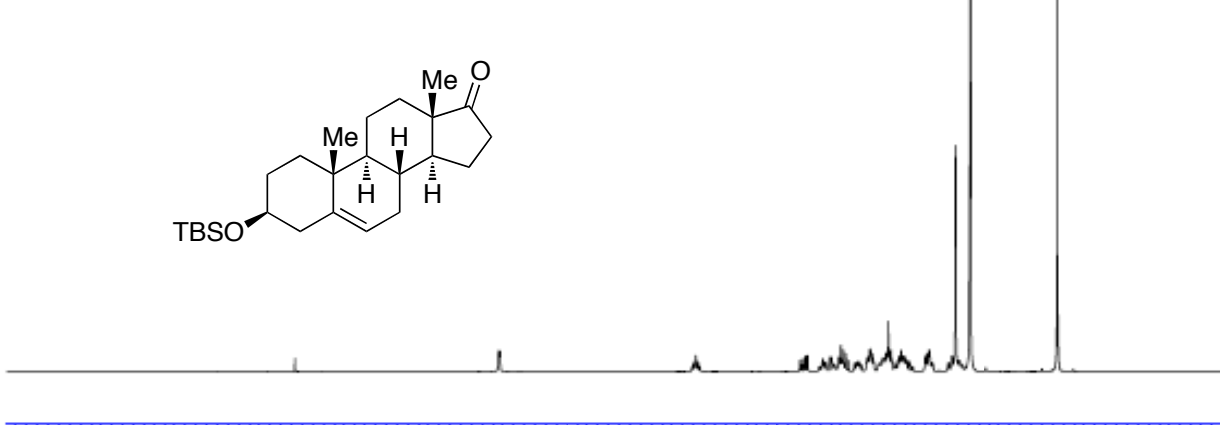
5.345
5.341
5.322
5.318
3.478
2.886
2.865
2.438
2.417
2.273
2.268
2.209
2.203
2.196
2.191
2.124
2.101
2.078
2.053
1.851
1.844
1.831
1.823
1.812
1.799
1.706
1.700
1.688
1.679
1.670
1.653
1.629
1.564
1.556
1.541
1.533
1.524
1.517
1.510
1.501
1.497
1.488
1.307
1.295
1.282
1.274
1.263
1.057
1.048
1.020
0.988
0.883
0.053



NAME SM-Org. Syn-Step-2-1H
 EXPNO 1
 PROCNO 1
 Date_ 20100917
 Time 14.20
 INSTRUM spect
 PROBHD 5 mm PADUL 13C
 PULPROG zg30
 TD 65536
 SOLVENT CDCl3
 NS 16
 DS 2
 SWH 8223.685 Hz
 FIDRES 0.125483 Hz
 AQ 3.9846387 sec
 RG 18
 DW 60.800 usec
 DE 6.50 usec
 TE 296.2 K
 D1 1.00000000 sec
 TDO 1



===== CHANNEL f1 =====
 NUC1 1H
 P1 9.31 usec
 PL1 -3.90 dB
 PL1W 23.43061066 W
 SFO1 400.1324710 MHz
 SI 32768
 SF 400.1300056 MHz
 WDW EM
 SSB 0
 LB 0.30 Hz
 GB 0
 PC 1.00



9 8 7 6 5 4 3 2 1 0 ppm

0.96
0.98
1.00
4.10
3.29
7.22
2.06
5.26
12.11
6.00