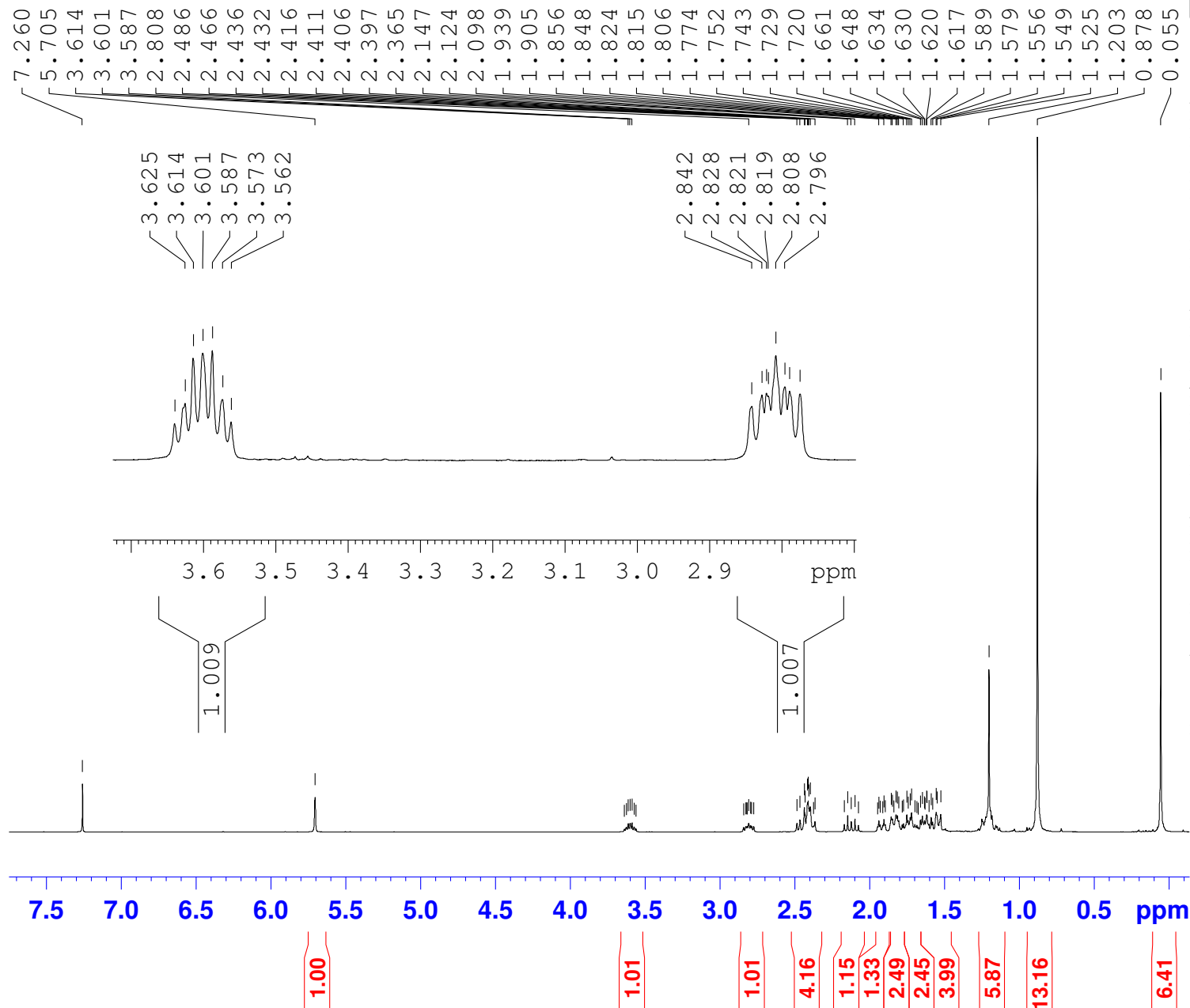


KZ-1-18 ketone recrystal
 PROTON CDCl3 C:\Bruker\TOPSPIN brummond 15

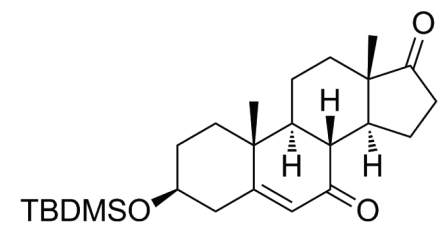


Current Data Parameters
 NAME KZ-1-P18 ketone recr
 EXPNO 10
 PROCNO 1

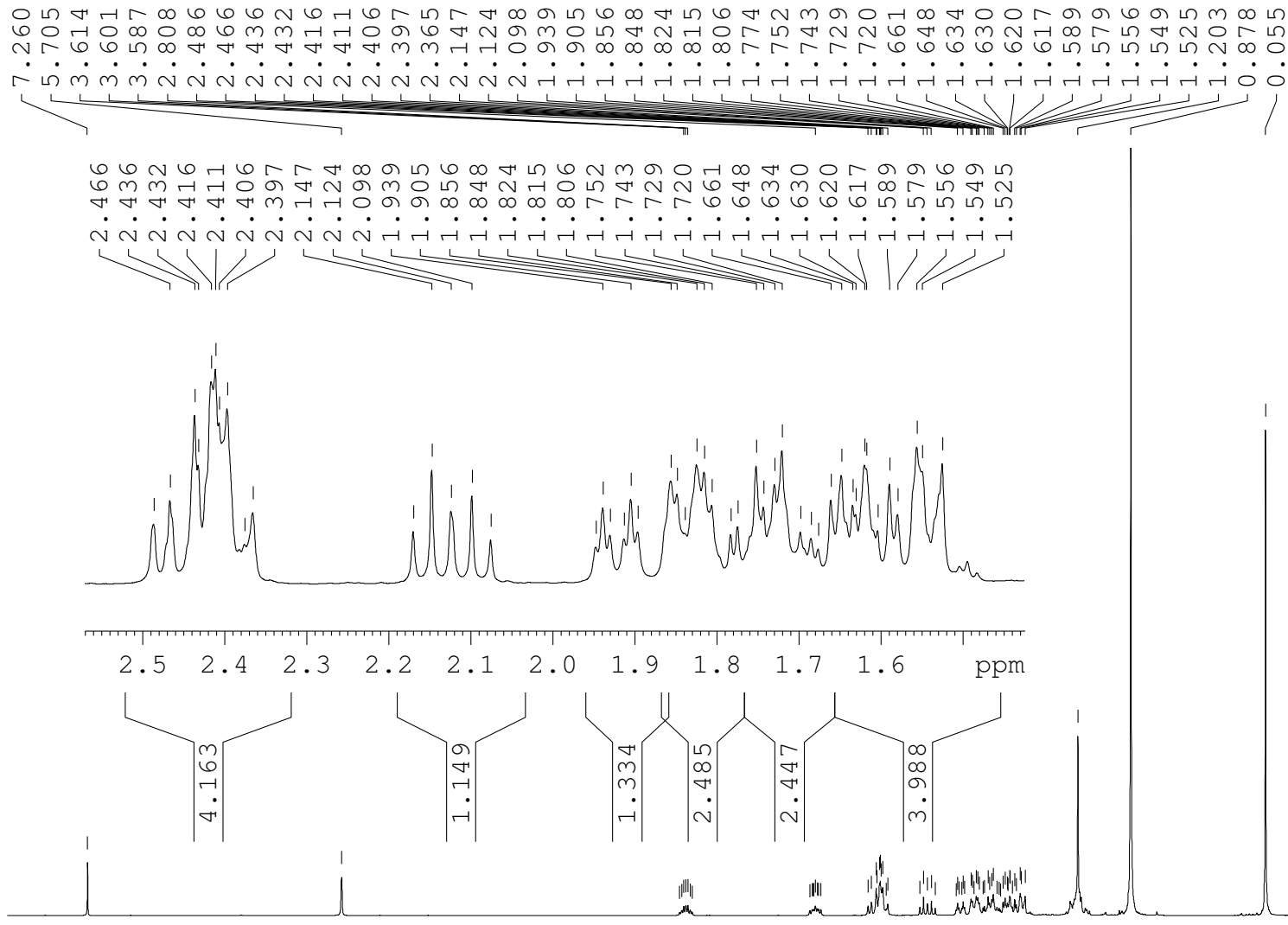
F2 - Acquisition Parameters
 Date_ 20110305
 Time 9.22
 INSTRUM spect
 PROBHD 5 mm PADUL 13C
 PULPROG zg30
 TD 65536
 SOLVENT CDCl3
 NS 16
 DS 2
 SWH 8223.685 Hz
 FIDRES 0.125483 Hz
 AQ 3.9846387 sec
 RG 32
 DW 60.800 usec
 DE 6.50 usec
 TE 296.4 K
 D1 1.00000000 sec

==== CHANNEL f1 =====
 NUC1 1H
 P1 9.31 usec
 PLW1 23.43099976 W
 SFO1 400.1324710 MHz

F2 - Processing parameters
 SI 65536
 SF 400.1300096 MHz
 WDW EM
 SSB 0
 LB 0.30 Hz
 GB 0
 PC 1.00



KZ-1-18 ketone recrystal
 PROTON CDCl3 C:\Bruker\TOPSPIN brummond 15



Current Data Parameters
 NAME KZ-1-P18 ketone recr
 EXPNO 10
 PROCNO 1

F2 - Acquisition Parameters
 Date_ 20110305
 Time 9.22
 INSTRUM spect
 PROBHD 5 mm PADUL 13C
 PULPROG zg30
 TD 65536
 SOLVENT CDCl3
 NS 16
 DS 2
 SWH 8223.685 Hz
 FIDRES 0.125483 Hz
 AQ 3.9846387 sec
 RG 32
 DW 60.800 usec
 DE 6.50 usec
 TE 296.4 K
 D1 1.00000000 sec

==== CHANNEL f1 =====
 NUC1 1H
 P1 9.31 usec
 PLW1 23.43099976 W
 SFO1 400.1324710 MHz

F2 - Processing parameters
 SI 65536
 SF 400.1300096 MHz
 WDW EM
 SSB 0
 LB 0.30 Hz
 GB 0
 PC 1.00

