

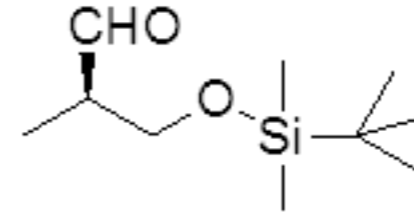
Peak	?(F1) [ppm]	?(F1) [Hz]	Intensity
1	9.7471	4874.8172	1.01
2	9.7439	4873.2168	1.10
3	7.2704	3636.1452	0.62
4	3.8802	1940.6045	0.35
5	3.8698	1935.4031	0.37
6	3.8597	1930.3518	0.76
7	3.8493	1925.1504	0.77
8	3.8324	1916.6982	0.75
9	3.8197	1910.3466	0.75
10	3.8119	1906.4456	0.30
11	3.7993	1900.1439	0.31
12	2.5563	1278.4823	0.11
13	2.5528	1276.7319	0.09
14	2.5456	1273.1309	0.09
15	2.5424	1271.5305	0.19
16	2.5396	1270.1302	0.11
17	2.5320	1266.3292	0.11
18	2.5293	1264.9788	0.20
19	2.5262	1263.4284	0.10
20	2.5190	1259.8275	0.09
21	2.5156	1258.1270	0.11
22	1.1059	553.0938	3.19
23	1.0920	546.1420	3.09
24	1.0868	543.5413	0.06
25	1.0096	504.9313	0.06
26	0.9266	463.4205	0.15
27	0.9223	461.2699	0.27
28	0.9039	452.0675	0.12
29	0.8991	449.6669	0.08
30	0.8957	447.9664	0.12
31	0.8921	446.1660	0.76
32	0.8864	443.3152	20.00
33	0.8826	441.4147	0.26
34	0.8804	440.3145	0.57
35	0.7595	379.8487	0.07
36	0.1202	60.1156	0.08
37	0.0674	33.7088	0.20
38	0.0622	31.1081	5.53
39	0.0561	28.0573	0.18

Current Data Parameters
NAME 32077-169
EXPNO 8
PROCNO 1

F2 - Acquisition Parameters
Date_ 20110929
Time 16.54
INSTRUM spect
PROBHD 5 mm QNP 1H/13
PULPROG zg30
TD 65536
SOLVENT CDC13
NS 32
DS 4
SWH 13020.833 Hz
FIDRES 0.198682 Hz
AQ 2.5166323 sec
RG 228.1
DW 38.400 usec
DE 6.50 usec
TE 300.0 K
D1 0.10000000 sec
TD0 1

==== CHANNEL f1 =====
NUC1 1H
P1 12.00 usec
PL1 -4.00 dB
SFO1 500.1330885 MHz

F2 - Processing parameters
SI 32768
SF 500.1300083 MHz
WDW no
SSB 0
LB 0.00 Hz
GB 0
PC 1.00



32077-169
branched
fr 16-26
nmr500c h-1

