

Current Data Parameters
 NAME 32077-165
 EXPNO 7
 PROCNO 1

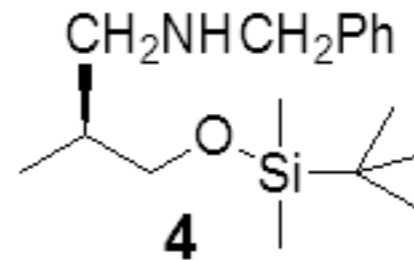
F2 - Acquisition Parameters
 Date_ 20110917
 Time 8.13
 INSTRUM spect
 PROBHD 5 mm QNP 1H/13
 PULPROG zg30
 TD 65536
 SOLVENT CDC13
 NS 32
 DS 4
 SWH 13020.833 Hz
 FIDRES 0.198682 Hz
 AQ 2.5166323 sec
 RG 114
 DW 38.400 usec
 DE 6.50 usec
 TE 300.0 K
 D1 0.10000000 sec
 TD0 1

==== CHANNEL f1 =====
 NUC1 1H
 P1 12.00 usec
 PL1 -4.00 dB
 SFO1 500.1330885 MHz

F2 - Processing parameters
 SI 32768
 SF 500.1300082 MHz
 WDW no
 SSB 0
 LB 0.00 Hz
 GB 0
 PC 1.00

Peak	?(F1) [ppm]	?(F1) [Hz]	Intensity
1	7.3337	3667.8034	2.79
2	7.3270	3664.4526	1.06
3	7.3236	3662.7521	1.12
4	7.3225	3662.2020	1.03
5	7.3063	3654.0999	0.16
6	7.2705	3636.1952	0.54
7	7.2647	3633.2945	0.14
8	7.2590	3630.4437	0.15
9	7.2580	3629.9436	0.16
10	7.2543	3628.0931	0.16
11	7.2523	3627.0929	0.16
12	7.2472	3624.5422	0.22

Peak	?(F1) [ppm]	?(F1) [Hz]	Intensity
13	3.8312	1916.0981	0.10
14	3.8203	1910.6467	0.06
15	3.8045	1902.7446	0.04
16	3.7936	1897.2932	1.55
17	3.7916	1896.2929	1.38
18	3.7651	1883.0395	0.06
19	3.5602	1780.5629	0.17
20	3.5490	1774.9614	0.21
21	3.5405	1770.7103	0.66
22	3.5297	1765.3089	1.25
23	3.5171	1759.0073	0.73
24	3.5101	1755.5063	0.18
25	3.4973	1749.1047	0.20
26	2.6980	1349.3508	0.38
27	2.6845	1342.5990	0.39
28	2.6749	1337.7978	0.46
29	2.6614	1331.0460	0.49
30	2.5212	1260.9278	0.41
31	2.5090	1254.8262	0.51
32	2.4980	1249.3248	0.37
33	2.4859	1243.2732	0.41
34	1.9089	954.6982	0.05
35	1.8960	948.2465	0.12
36	1.8834	941.9449	0.20
37	1.8704	935.4432	0.20
38	1.8580	929.2416	0.12
39	1.8452	922.8399	0.05
40	1.6845	842.4690	0.07
41	0.9174	458.8193	3.04
42	0.9039	452.0675	2.86
43	0.8897	444.9657	20.00
44	0.0452	22.6059	13.29



32077-165
 (R) chromatography
 fr 4-5
 nmr500c h-1

