

32077-174
crystallized
nmr400b c-13

NAME 32077-174
EXPNO 12
PROCNO 1
Date_ 20111119
Time 10.33
INSTRUM spect
PROBHD 5 mm PABBO BB-
PULPROG zgdc
TD 65536
SOLVENT CDCl3
NS 3578
DS 4
SWH 26315.789 Hz
FIDRES 0.401547 Hz
AQ 1.2452340 sec
RG 8192
DW 19.000 usec
DE 6.50 usec
TE 673.2 K
D1 0.10000000 sec
D11 0.03000000 sec
TD0 40

— 162.98
— 160.55
— 158.60

139.57
139.53
— 135.25
129.45
129.37
129.15

115.37
115.16
113.91

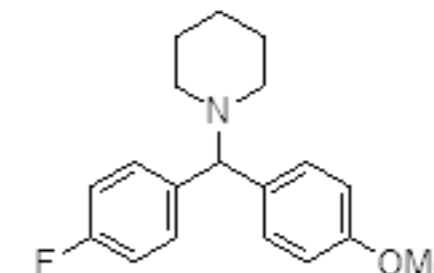
77.55
77.43
77.23
76.91
75.27

— 55.39
— 53.20

— 26.46
— 24.88

==== CHANNEL f1 =====
NUC1 13C
P1 3.50 usec
PL1 0.00 dB
PL1W 31.90095711 W
SFO1 100.6741319 MHz

==== CHANNEL f2 =====
CPDPRG2 waltz16
NUC2 1H
PCPD2 80.00 usec
PL2 120.00 dB
PL12 17.00 dB
PL2W 0.00000000 W
PL12W 0.16438942 W
SFO2 400.3320017 MHz
SI 32768
SF 100.6630391 MHz
WDW EM
SSB 0
LB 1.00 Hz
GB 0
PC 1.40



Peak	?(F1) [ppm]	?(F1) [Hz]	Intensity [abs]	Annotation
1	162.9763	16405.6897	66539120.00	
2	160.5476	16161.2093	48165162.00	
3	158.5968	15964.8359	141634898.00	
4	139.5658	14049.1176	67032828.00	
5	139.5349	14046.0071	66398370.00	
6	135.2477	13614.4445	110707894.00	
7	129.4523	13031.0619	344058648.00	
8	129.3739	13023.1700	202107540.00	
9	129.1471	13000.3396	608238156.00	
10	115.3661	11613.1022	244042428.00	
11	115.1565	11592.0033	338769706.00	
12	113.9141	11466.9395	503640476.00	
13	77.5458	7805.9959	775316130.00	
14	77.4307	7794.4096	31760626.00	
15	77.2281	7774.0152	819551458.00	
16	76.9104	7742.0346	637031180.00	
17	75.2715	7577.0579	286215416.00	
18	55.3878	5575.5043	242991188.00	
19	53.2022	5355.4951	517261496.00	
20	26.4587	2663.4132	524628860.00	
21	24.8795	2504.4461	266946706.00	

210 200 190 180 170 160 150 140 130 120 110 100 90 80 70 60 50 40 30 20 10 0 ppm