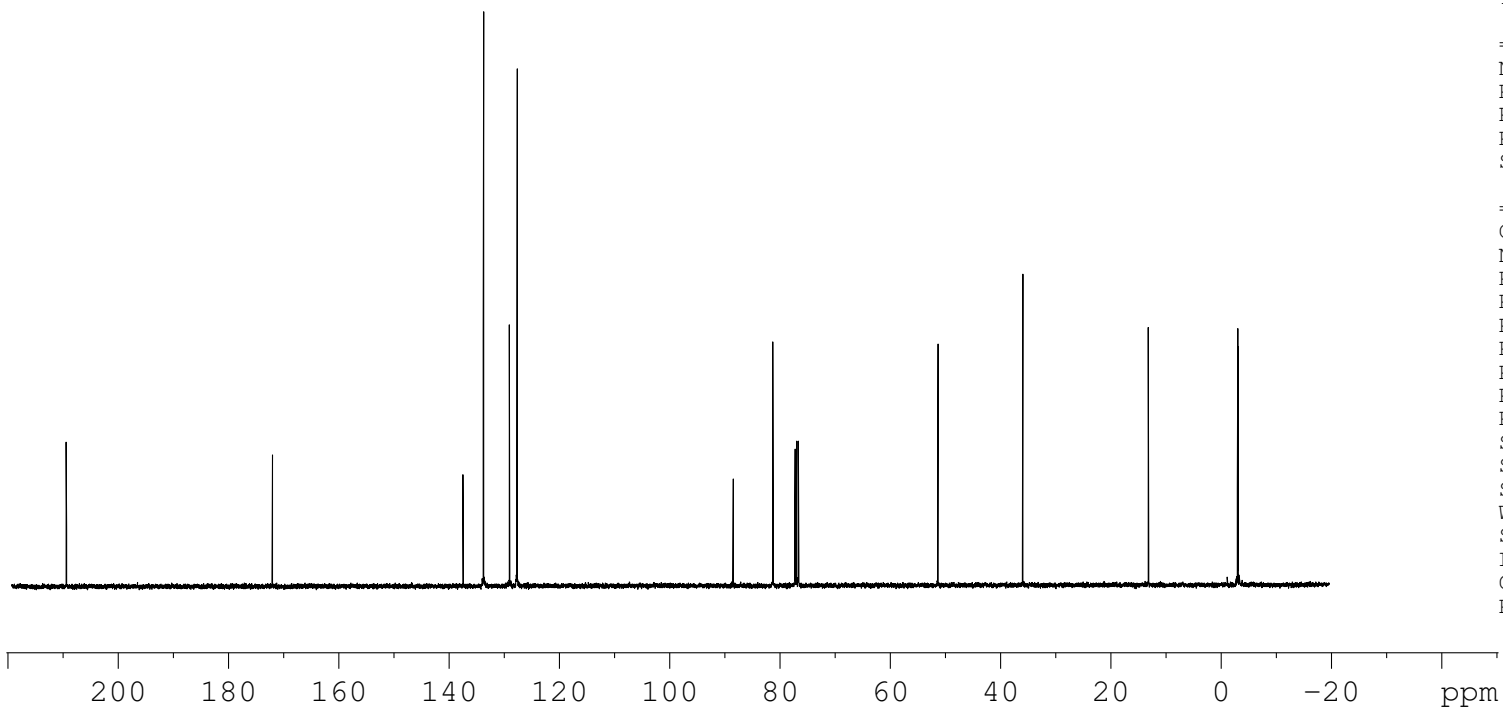
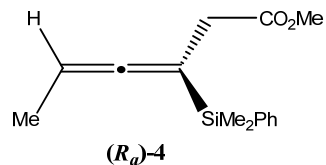


(R)-methyl-3-(dimethyl(phenyl)silyl)hexa-3,4-dienoate

— 209.40
 — 172.01
 137.44
 133.73
 129.03
 127.63
 88.42
 81.22
 77.32
 77.00
 76.68
 — 51.39
 — 36.00
 — 13.21
 -2.97
 -3.07



NAME FRGR008CANAcarbon
 EXPNO 1
 PROCNO 1
 Date_ 20110919
 Time 8.10
 INSTRUM spect
 PROBHD 5 mm PABBO BB-
 PULPROG zgpg30
 TD 65536
 SOLVENT CDC13
 NS 43
 DS 4
 SWH 24038.461 Hz
 FIDRES 0.366798 Hz
 AQ 1.3631988 sec
 RG 203
 DW 20.800 usec
 DE 6.50 usec
 TE 295.8 K
 D1 3.0000000 sec
 D11 0.0300000 sec
 TD0 1

==== CHANNEL f1 =====
 NUC1 13C
 P1 10.00 usec
 PL1 -1.59 dB
 PL1W 51.07626343 W
 SFO1 100.6479773 MHz

==== CHANNEL f2 =====
 CPDPRG2 waltz16
 NUC2 1H
 PCPD2 75.00 usec
 PL2 -1.00 dB
 PL12 13.39 dB
 PL13 20.00 dB
 PL2W 11.09959412 W
 PL12W 0.40393090 W
 PL13W 0.08816721 W
 SFO2 400.2316009 MHz
 SI 32768
 SF 100.6379306 MHz
 WDW EM
 SSB 0
 LB 1.00 Hz
 GB 0
 PC 1.40