

32077-197  
isolated and vacuum dried  
nmr400c c-13  
hughesda

NAME 32077-197  
EXPNO 3  
PROCNO 1  
Date\_ 20120617  
Time 15.04  
INSTRUM spect  
PROBHD 5 mm PABBO BB-  
PULPROG zgdc30  
TD 65536  
SOLVENT CDCl3  
NS 2225  
DS 4  
SWH 26315.789 Hz  
FIDRES 0.401547 Hz  
AQ 1.2452340 sec  
RG 8192  
DW 19.000 usec  
DE 6.50 usec  
TE 300.1 K  
D1 0.10000000 sec  
D11 0.03000000 sec  
TD0 40

=====  
CHANNEL f1  
NUC1 13C  
P1 8.00 usec  
PL1 4.50 dB  
SFO1 100.6238364 MHz

=====  
CHANNEL f2  
CPDPRG2 waltz16  
NUC2 1H  
PCPD2 80.00 usec  
PL2 120.00 dB  
PL12 18.34 dB  
SFO2 400.1320007 MHz  
SI 32768  
SF 100.6127475 MHz  
WDW EM  
SSB 0  
LB 1.00 Hz  
GB 0  
PC 1.40

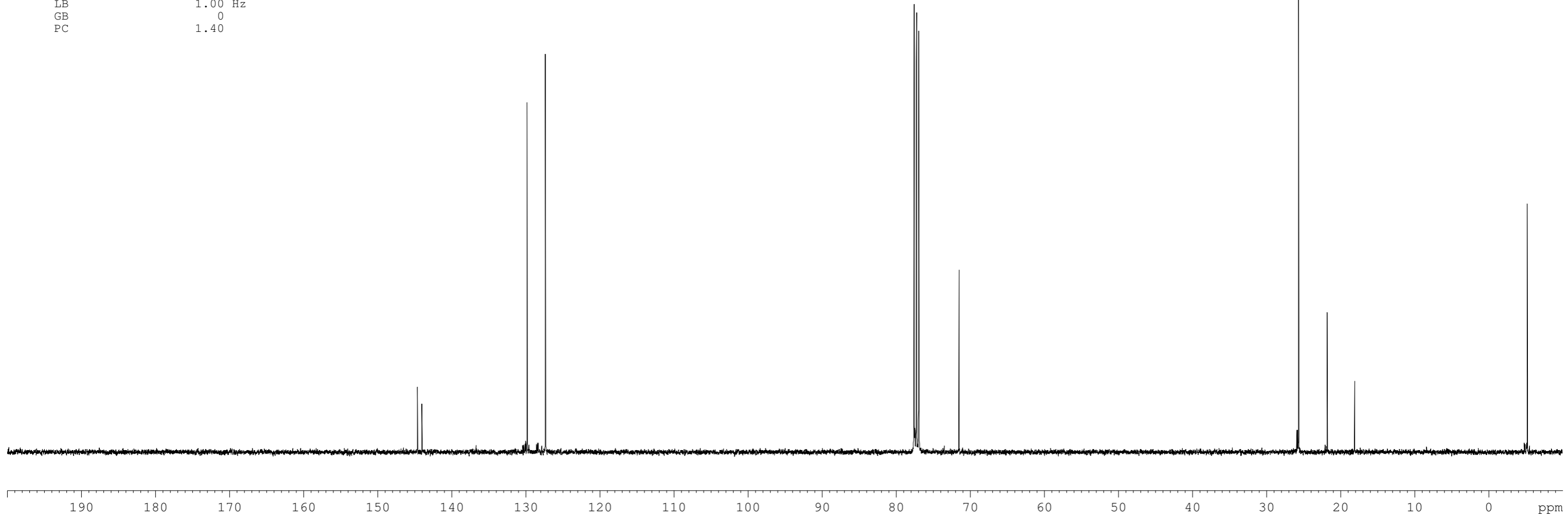
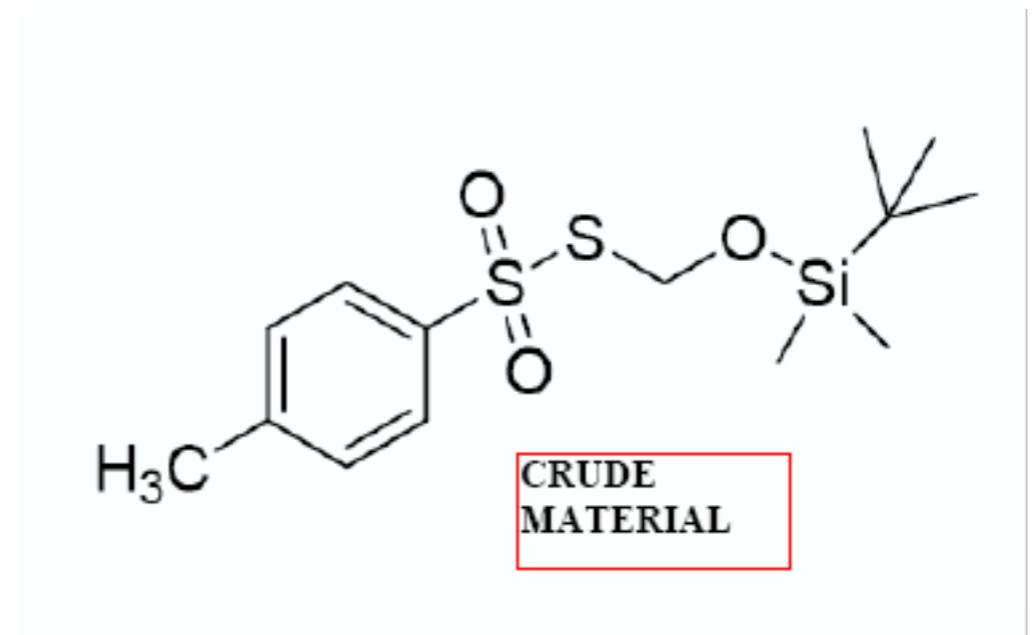
144.61  
144.00

129.80  
127.33

77.55  
77.43  
77.23  
76.91  
71.48

25.86  
25.77  
25.62  
21.78  
18.07

-5.26



NAME 32077-200  
EXPNO 11  
PROCNO 1  
Date\_ 20120707  
Time 8.11  
INSTRUM spect  
PROBHD 5 mm QNP 1H/13  
PULPROG zgdc  
TD 131072  
SOLVENT CDCl3  
NS 1579  
DS 4  
SWH 40322.582 Hz  
FIDRES 0.307637 Hz  
AQ 1.6253552 sec  
RG 8192  
DW 12.400 usec  
DE 6.50 usec  
TE 300.0 K  
D1 0.10000000 sec  
D11 0.03000000 sec  
TD0 40

=====  
CHANNEL f1  
NUC1 13C  
P1 2.50 usec  
PL1 0.00 dB  
SFO1 125.7703648 MHz

=====  
CHANNEL f2  
CPDPRG2 waltz16  
NUC2 1H  
PCPD2 80.00 usec  
PL2 120.00 dB  
PL12 11.50 dB  
SFO2 500.1325007 MHz  
SI 65536  
SF 125.7577653 MHz  
WDW EM  
SSB 0  
LB 1.00 Hz  
GB 0  
PC 1.40

32077-200  
cryst from MTBE  
nmr500c c-13  
hughesda

144.61  
143.98

129.79  
127.31

77.49  
77.23  
76.98  
71.46

25.60  
21.76  
18.05

-5.28

