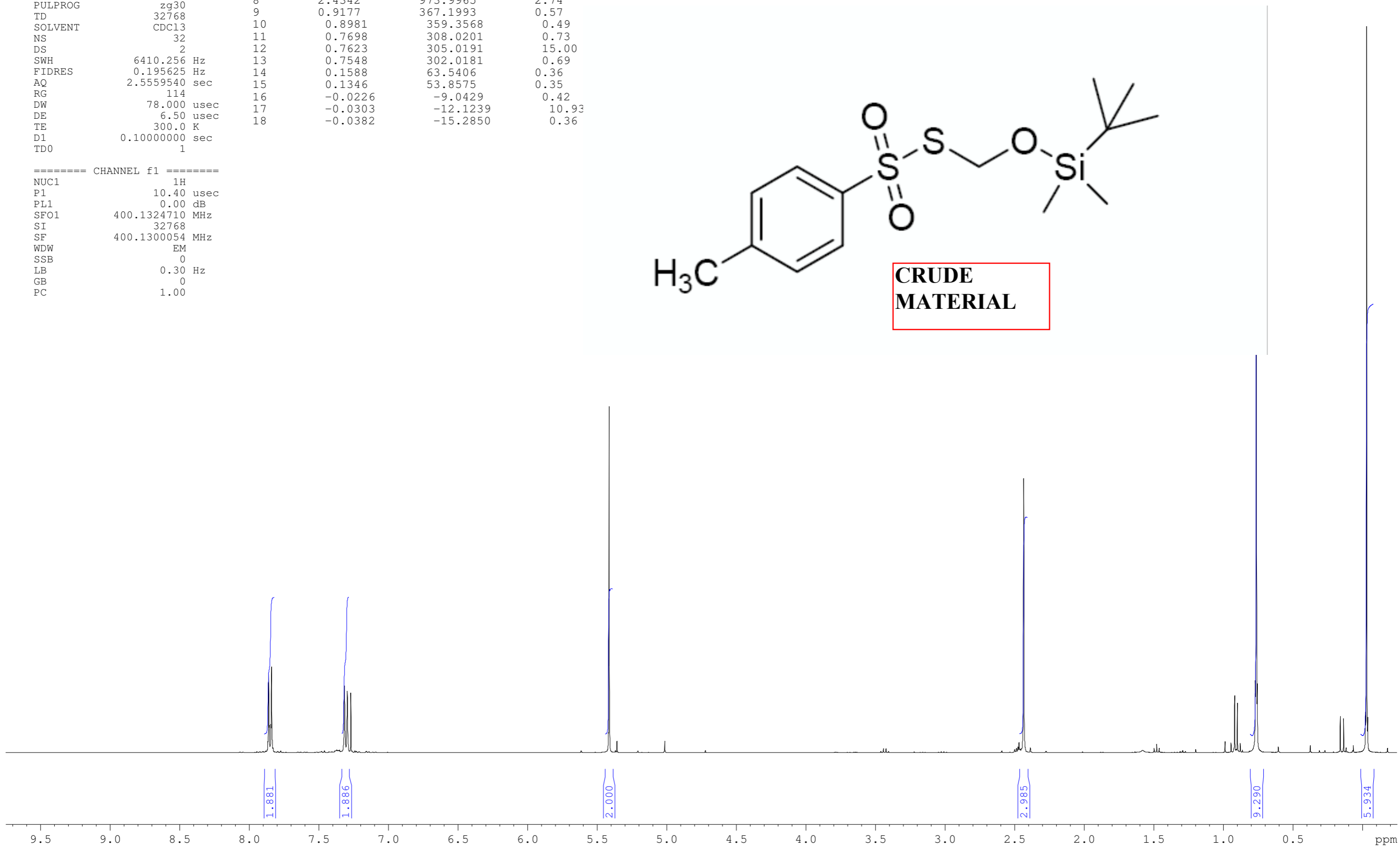
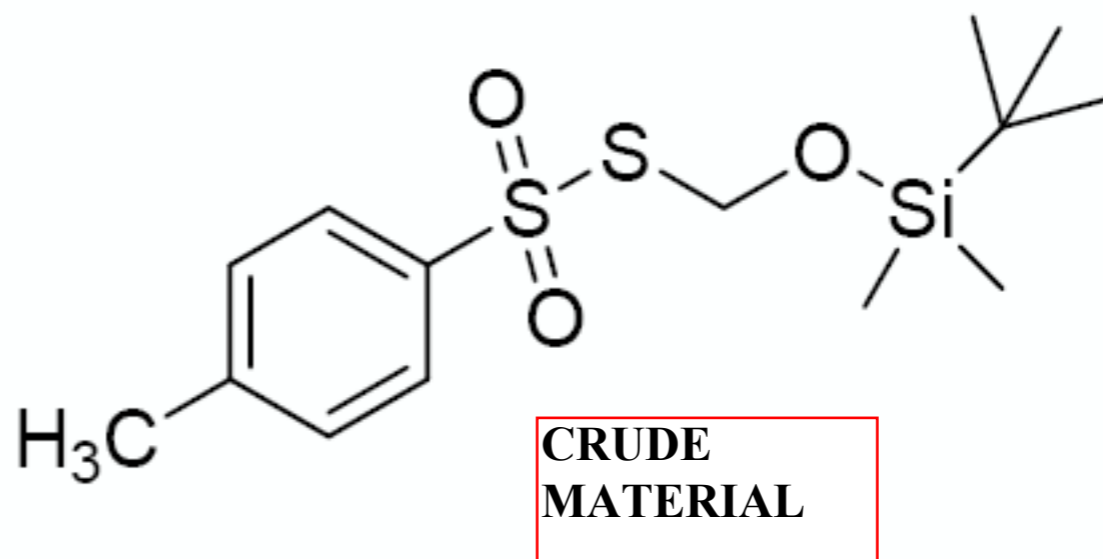


	Peak	?(F1) [ppm]	?(F1) [Hz]	Intensity [rel]	Annotation
	1	7.8612	3145.5020	0.80	
NAME	2	7.8402	3137.0993	0.86	
EXPNO	3	7.3157	2927.2311	0.68	
PROCNO	4	7.2957	2919.2285	0.62	
Date_	5	7.2944	2918.7083	0.55	
Time	6	7.2701	2908.9852	0.61	
INSTRUM	7	5.4138	2166.2238	3.55	
PROBHD	8	2.4342	973.9965	2.74	
PULPROG	9	0.9177	367.1993	0.57	
TD	10	0.8981	359.3568	0.49	
SOLVENT	11	0.7698	308.0201	0.73	
NS	12	0.7623	305.0191	15.00	
DS	13	0.7548	302.0181	0.69	
SWH	14	0.1588	63.5406	0.36	
FIDRES	15	0.1346	53.8575	0.35	
AQ	16	-0.0226	-9.0429	0.42	
RG	17	-0.0303	-12.1239	10.93	
DW	18	-0.0382	-15.2850	0.36	
DE					
TE					
D1					
TDO					

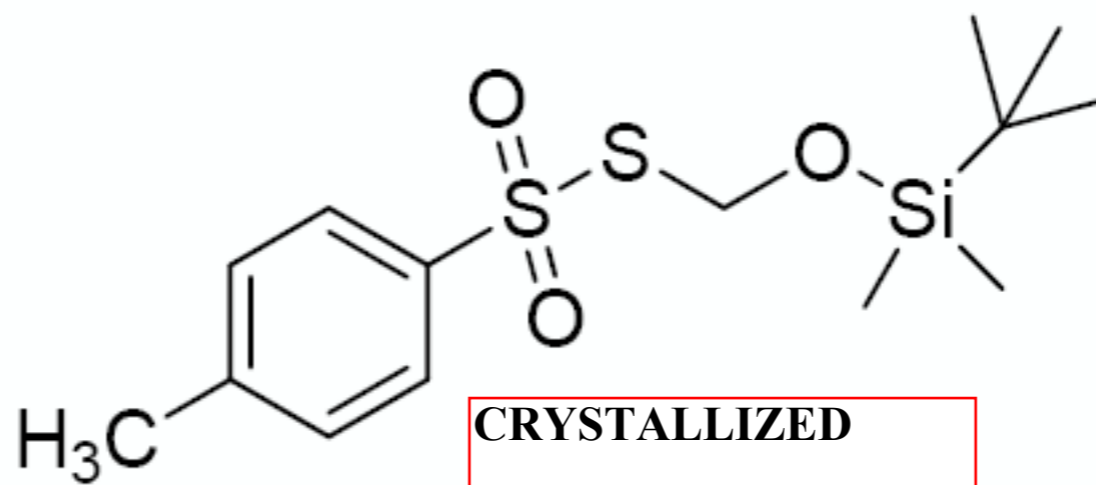
32077-197
isolated and vacuum dried
nmr400c h-1
hughesda

```
===== CHANNEL f1 =====
NUC1      1H
P1        10.40 usec
PL1       0.00 dB
SFO1     400.1324710 MHz
SI        32768
SF        400.1300054 MHz
WDW       EM
SSB       0
LB        0.30 Hz
GB        0
PC        1.00
```



NAME 32077-200
 EXPNO 10
 PROCNO 1
 Date_ 20120707
 Time 8.05
 INSTRUM spect
 PROBHD 5 mm QNP 1H/13
 PULPROG zg30
 TD 65536
 SOLVENT CDCl3
 NS 32
 DS 4
 SWH 13020.833 Hz
 FIDRES 0.198682 Hz
 AQ 2.5166707 sec
 RG 90.5
 DW 38.400 usec
 DE 6.50 usec
 TE 300.0 K
 D1 0.10000000 sec
 TD0 1

32077-200
 recryst from MTBE
 nmr500c h-1
 hughesda



===== CHANNEL f1 =====
 NUC1 1H
 P1 12.00 usec
 PL1 -4.00 dB
 SFO1 500.1330885 MHz
 SI 32768
 SF 500.1300082 MHz
 WDW EM
 SSB 0
 LB 0.30 Hz
 GB 0
 PC 1.00

Peak	?(F1) [ppm]	?(F1) [Hz]	Intensity [abs]
1	7.8535	3927.7710	31160953.00
2	7.8501	3926.0706	10519502.00
3	7.8403	3921.1693	11895955.00
4	7.8367	3919.3688	31209633.00
5	7.8328	3917.4183	5068397.00
6	7.3099	3655.9003	24609565.00
7	7.2938	3647.8483	25872015.00
8	7.2701	3635.9952	3944909.00
9	5.4093	2705.3533	136863886.00
10	2.4295	1215.0659	105994808.00
11	0.7985	399.3538	4472616.00
12	0.7643	382.2494	33620975.00
13	0.7587	379.4486	480559328.00
14	0.7527	376.4479	25913614.00
15	-0.0276	-13.8036	18696702.00
16	-0.0337	-16.8544	232446207.00
17	-0.0400	-20.0052	13034602.00

