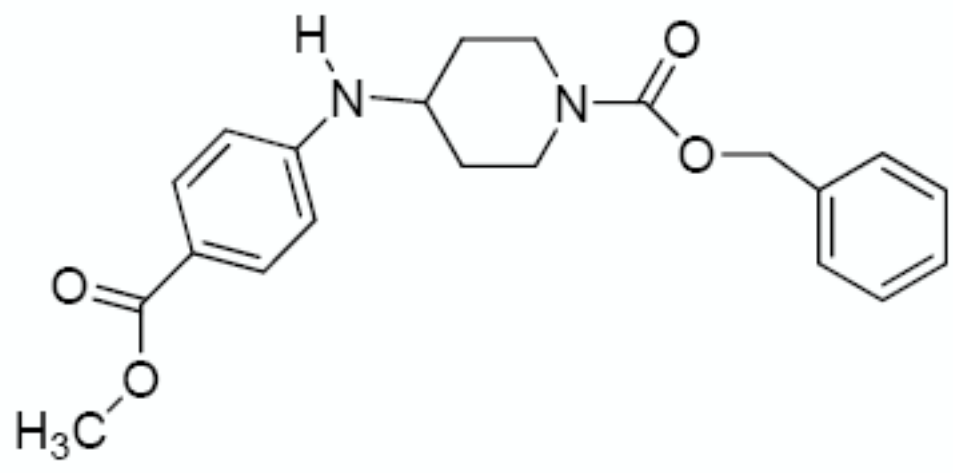


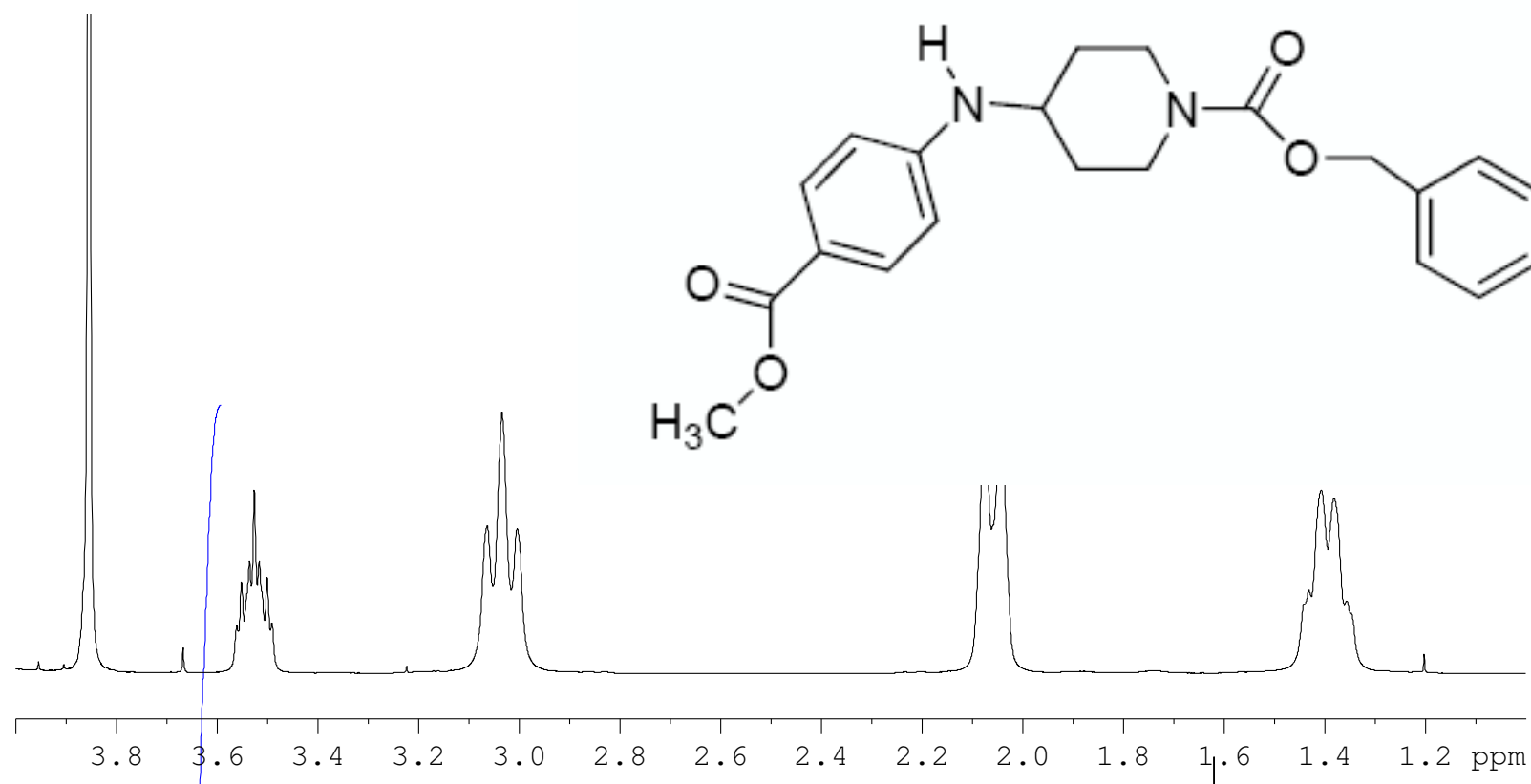
NAME 32077-202
 EXPNO 3
 PROCNO 1
 Date_ 20120730
 Time 7.15
 INSTRUM spect
 PROBHD 5 mm PABBO BB-
 PULPROG zg30
 TD 32768
 SOLVENT CDCl3
 NS 32
 DS 2
 SWH 6410.256 Hz
 FIDRES 0.195625 Hz
 AQ 2.5559540 sec
 RG 40.3
 DW 78.000 usec
 DE 6.50 usec
 TE 303.0 K
 D1 0.10000000 sec
 TD0 1

===== CHANNEL f1 =====
 NUC1 1H
 P1 10.40 usec
 PL1 0.00 dB
 SFO1 400.1324710 MHz
 SI 32768
 SF 400.1300052 MHz
 WDW EM
 SSB 0
 LB 0.30 Hz
 GB 0
 PC 1.00



32077-202
 crystallized product
 nmr400c h-1
 hughesda

Peak	?(F1) [ppm]	?(F1) [Hz]	Intensity
1	7.8825	3154.0248	0.39
2	7.8761	3151.4639	3.33
3	7.8713	3149.5433	1.04
4	7.8589	3144.5817	0.99
5	7.8540	3142.6211	3.52
6	7.8476	3140.0602	0.41
7	7.3825	2953.9598	0.44
8	7.3772	2951.8391	3.32
9	7.3754	2951.1188	2.97
10	7.3658	2947.2776	10.28
11	7.3546	2942.7961	0.78
12	7.3445	2938.7548	0.96
13	7.3372	2935.8339	0.65
14	7.3345	2934.7535	0.55
15	7.3327	2934.0333	0.63
16	7.3263	2931.4725	0.32
17	7.3230	2930.1520	0.62
18	7.3171	2927.7913	0.26
19	7.3104	2925.1104	0.31
20	7.2701	2908.9852	1.00
21	6.5712	2629.3343	0.41
22	6.5648	2626.7735	3.21
23	6.5601	2624.8928	1.05
24	6.5474	2619.8112	0.95
25	6.5426	2617.8906	3.15
26	6.5363	2615.3698	0.39
27	5.1531	2061.9099	5.82
28	4.1681	1667.7819	0.47
29	4.1390	1656.1381	0.51
30	4.1014	1641.0932	0.58
31	3.8536	1541.9410	15.00
32	3.5521	1421.3018	0.26
33	3.5364	1415.0198	0.32
34	3.5266	1411.0985	0.53
35	3.5168	1407.1772	0.32
36	3.5010	1400.8551	0.27
37	3.0638	1225.9183	0.42
38	3.0343	1214.1145	0.75
39	3.0046	1202.2306	0.41
40	2.0729	829.4295	0.64
41	2.0460	818.6660	0.71
42	1.4315	572.7861	0.24
43	1.4067	562.8629	0.52
44	1.3812	552.6596	0.50
45	1.3563	542.6963	0.21



1.930
 4.606
 2.021
 2.000
 3.012
 2.997
 1.019
 2.019
 2.035
 2.030

9.5 9.0 8.5 8.0 7.5 7.0 6.5 6.0 5.5 5.0 4.5 4.0 3.5 3.0 2.5 2.0 1.5 1.0 0.5 ppm