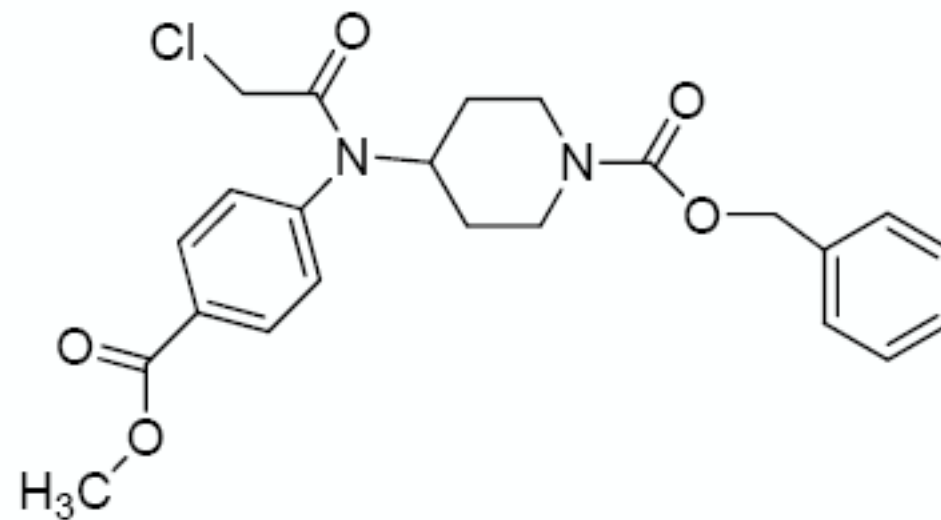


NAME 32077-204  
 EXPNO 8  
 PROCNO 1  
 Date\_ 20120813  
 Time 18.12  
 INSTRUM spect  
 PROBHD 5 mm PABBO BB-  
 PULPROG zg30  
 TD 32768  
 SOLVENT CDCl3  
 NS 32  
 DS 2  
 SWH 6578.947 Hz  
 FIDRES 0.200774 Hz  
 AQ 2.4904180 sec  
 RG 90.5  
 DW 76.000 usec  
 DE 6.50 usec  
 TE 300.0 K  
 D1 0.10000000 sec  
 TD0 1

===== CHANNEL f1 =====  
 NUC1 1H  
 P1 12.75 usec  
 PL1 -2.00 dB  
 PL1W 13.05791473 W  
 SFO1 400.3324722 MHz  
 SI 16384  
 SF 400.3300037 MHz  
 WDW EM  
 SSB 0  
 LB 0.30 Hz  
 GB 0  
 PC 1.00

32077-204  
 crystallized product  
 nmr400b h-1  
 hughesda



Peak	?(F1) [ppm]	?(F1) [Hz]	Intensity [abs]
1	8.1374	3257.6454	11737674.75
2	8.1157	3248.9582	9956863.88
3	7.3460	2940.8242	1018405.25
4	7.3397	2938.3021	1666236.25
5	7.3301	2934.4590	2154468.50
6	7.3250	2932.4173	3311569.38
7	7.3193	2930.1354	4797715.12
8	7.3165	2929.0145	3799460.88
9	7.3066	2925.0512	14612752.25
10	7.3016	2923.0496	7557565.12
11	7.2992	2922.0888	8644153.62
12	7.2942	2920.0871	14173517.12
13	7.2875	2917.4049	4967737.50
14	7.2841	2916.0438	3602340.62
15	7.2774	2913.3616	3845996.38
16	7.2697	2910.2790	6042081.50
17	7.2334	2895.7470	9025003.75
18	7.2125	2887.3802	8727613.38
19	5.0446	2019.5047	5653370.62
20	4.7991	1921.2237	883499.62
21	4.7686	1909.0137	1680276.00
22	4.7383	1896.8837	903904.38
23	4.2291	1693.0356	1663611.25
24	3.9629	1586.4678	59859554.25
25	3.6825	1474.2152	14029165.25
26	3.2146	1286.9008	4952596.00
27	2.8764	1151.5092	2116871.38
28	1.8537	742.0917	2838533.88
29	1.8248	730.5222	3053830.00
30	1.2776	511.4616	1155044.50
31	1.2597	504.2957	2150432.25
32	1.2418	497.1298	1668666.00
33	1.2303	492.5260	1854148.00
34	1.1915	476.9932	15500453.12

