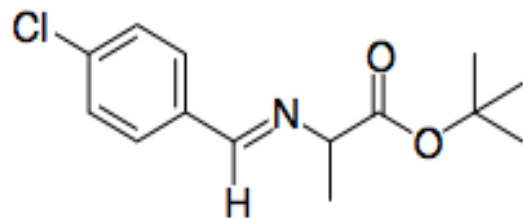


**<sup>1</sup>H NMR (500 MHz, (CD<sub>3</sub>)<sub>2</sub>SO)**



—10.00

—8.38

└7.78

└7.76

└7.53

└7.51

└4.11

└4.10

└4.08

└4.07

└1.40

└1.35

└1.34

0.02

1.00

2.07

2.10

1.21

9.11

2.96

