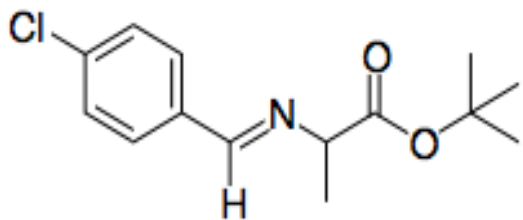


**<sup>1</sup>H NMR (500 MHz, CDCl<sub>3</sub>)**



9.99

8.25

7.72

7.70

7.39

7.37

4.06

4.04

4.03

4.02

1.49

1.48

1.47

0.01

1.00

2.03

2.04

1.01

12.34

11.5 10.5 9.5 8.5 7.5 6.5 5.5 4.5 3.5 2.5 1.5 0.5 -0.5  
f1 (ppm)