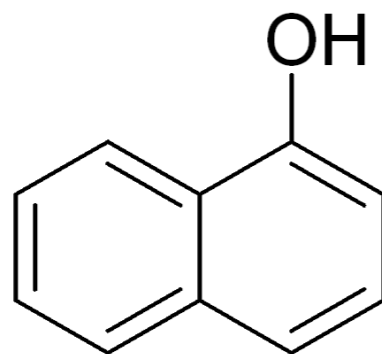


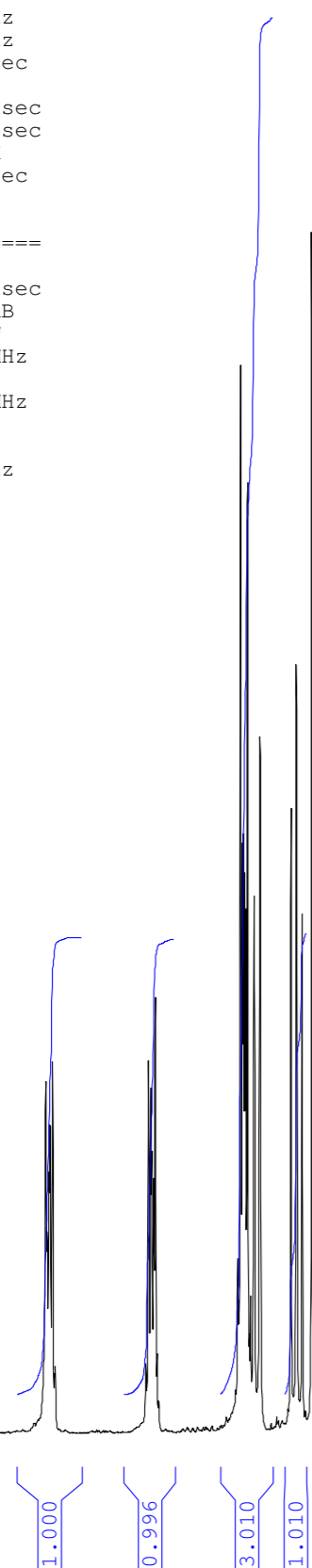
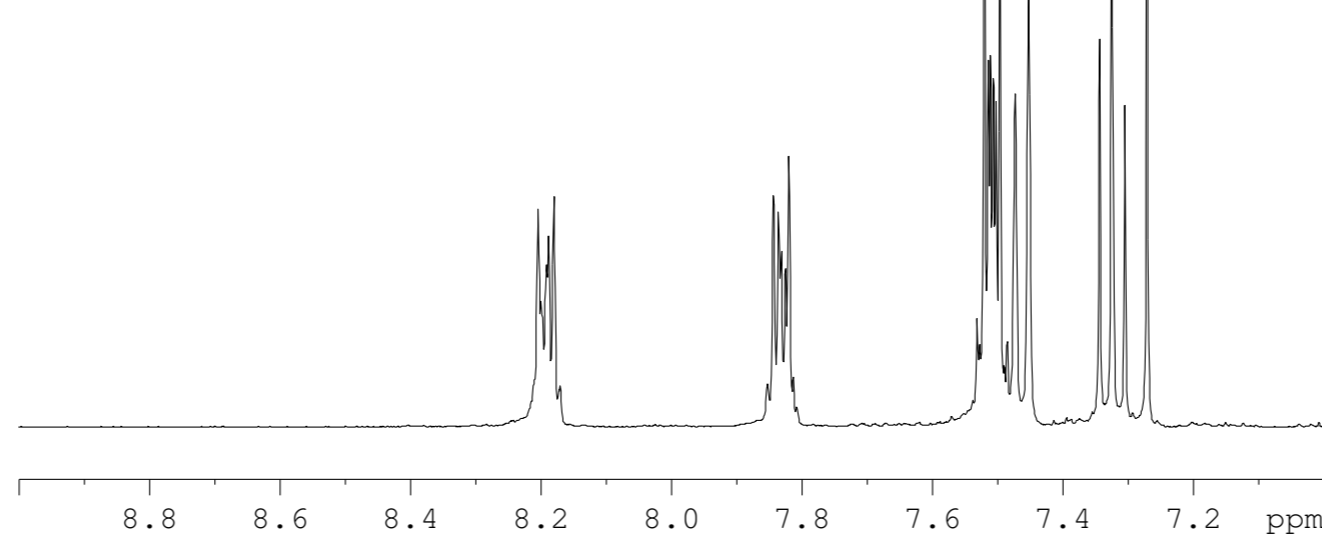
NAME 32077-210
 EXPNO 1
 PROCNO 1
 Date_ 20121108
 Time 7.45
 INSTRUM spect
 PROBHD 5 mm PABBO BB-
 PULPROG zg30
 TD 32768
 SOLVENT CDCl3
 NS 32
 DS 2
 SWH 6578.947 Hz
 FIDRES 0.200774 Hz
 AQ 2.4904180 sec
 RG 228.1
 DW 76.000 usec
 DE 6.50 usec
 TE 300.0 K
 D1 0.10000000 sec
 TD0 1

===== CHANNEL f1 =====
 NUC1 1H
 P1 12.75 usec
 PL1 -2.00 dB
 PL1W 13.05791473 W
 SFO1 400.3324722 MHz
 SI 16384
 SF 400.3300037 MHz
 WDW EM
 SSB 0
 LB 0.30 Hz
 GB 0
 PC 1.00



32077-210/1 hughesda
 32077-210
 1-naphthol
 nmr400b h-1

Peak	?(F1) [ppm]	?(F1) [Hz]	Intensit:
1	8.2031	3283.9471	3917701.41
2	8.1989	3282.2657	2446733.84
3	8.1905	3278.9029	3171464.53
4	8.1873	3277.6218	3732360.59
5	8.1789	3274.2591	3863828.00
6	8.1715	3271.2966	717625.41
7	8.1697	3270.5760	804764.31
8	7.8513	3143.1110	834295.34
9	7.8425	3139.5881	4515164.31
10	7.8346	3136.4254	4189512.03
11	7.8301	3134.6240	3101377.34
12	7.8241	3132.2220	2969236.31
13	7.8188	3130.1002	4667846.34
14	7.8120	3127.3780	887677.50
15	7.5299	3014.4449	1657969.16
16	7.5265	3013.0838	1608775.53
17	7.5192	3010.1614	12284321.91
18	7.5129	3007.6393	5630409.72
19	7.5095	3006.2782	7263333.44
20	7.5053	3004.5968	6800930.06
21	7.5012	3002.9554	6246365.56
22	7.4952	3000.5534	11275483.28
23	7.4884	2997.8312	1202271.12
24	7.4841	2996.1098	1593130.34
25	7.4718	2991.1857	6023583.53
26	7.4512	2982.9389	8438530.22
27	7.3425	2939.4231	6381277.12
28	7.3238	2931.9369	9319445.34
29	7.3033	2923.7301	4753492.75
30	7.2697	2910.2790	14560416.22
31	6.8433	2739.5783	7947697.50
32	6.8412	2738.7376	7736000.06
33	6.8245	2732.0521	7773360.44
34	6.8229	2731.4116	6751642.25
35	5.1731	2070.9471	3974880.12



Integration values for the peaks in the zoomed-in spectrum:
 1.000
 0.996
 3.010
 1.010
 0.953
 0.942