

—178.933

150.242
149.696
144.310
137.157
136.388
130.118
129.197
126.106

—103.797

—50.284

26.231
23.679
20.698



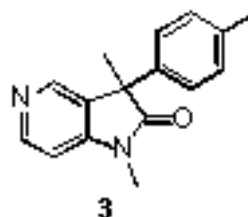
Current Data Parameters
NAME YKW-orgsyn-2ndstep
EXPNO 2
PROCNO 1

F2 - Acquisition Parameters
Date_ 20140515
Time 20.02
INSTRUM spect
PROBHD 5 mm PABBO BB/
PULPROG zgdc
TD 187496
SOLVENT CDC13
NS 186
DS 0
SWH 29761.904 Hz
FIDRES 0.158734 Hz
AQ 3.1499329 sec
RG 2050
DW 16.800 usec
DE 6.50 usec
TE 297.2 K
D1 3.0000000 sec
D11 0.0300000 sec
TDO 1

==== CHANNEL f1 =====
SFO1 125.7062372 MHz
NUC1 13C
P1 10.00 usec
PLW1 72.83999634 W

==== CHANNEL f2 =====
SFO2 499.8724993 MHz
NUC2 1H
CPDPRG[2] waltz16
PCPD2 80.00 usec
PLW2 19.0000000 W
PLW12 0.29688001 W

F2 - Processing parameters
SI 1048576
SF 125.6924395 MHz
WDW EM
SSB 0
LB 0.30 Hz
GB 0
PC 1.40



3

