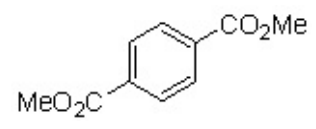
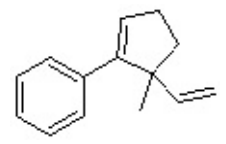


Cyclopentene (run #1) 33.89 mg
Dimethyl terephthalate (IS) 16.63 mg
1H NMR in CDCl₃, 500 MHz



8.14
7.45
7.43
7.31
7.29
7.28
7.28
7.25
7.23
6.13
6.11
6.09
6.07
6.06
6.06
5.13
5.13
5.09
5.09
5.08
5.08
5.06
5.06
3.98
2.45
2.44
2.43
2.42
2.04
2.03
2.02
2.01
1.94
1.92
1.91
1.90
1.35

DMT mw 194.18
Cyclopentene mw 184.282
 $(16.63/194.18) \times 4.18 \times 184.282 / 2 = 32.99 \text{ mg}$
 $32.99 / 33.89 = 97.3 \text{ wt\%}$
 $(16.63/194.18) \times 4.17 \times 184.282 / 2 = 32.91 \text{ mg}$
 $32.91 / 33.89 = 97.1 \text{ wt\%}$
Avg = 97.2 wt%

