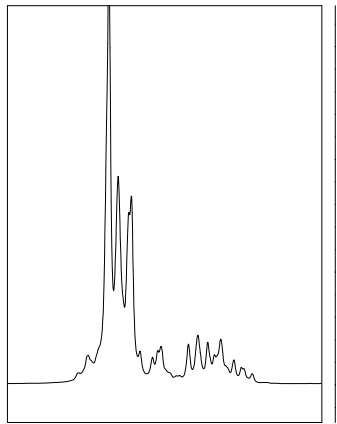
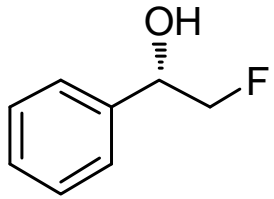
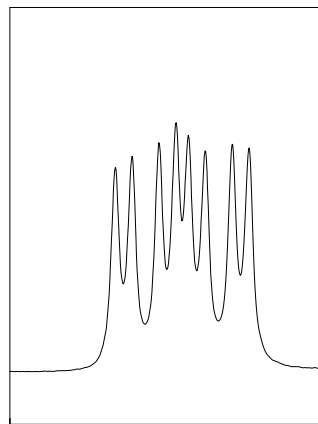


2-Fluoro-1-phenylethanol

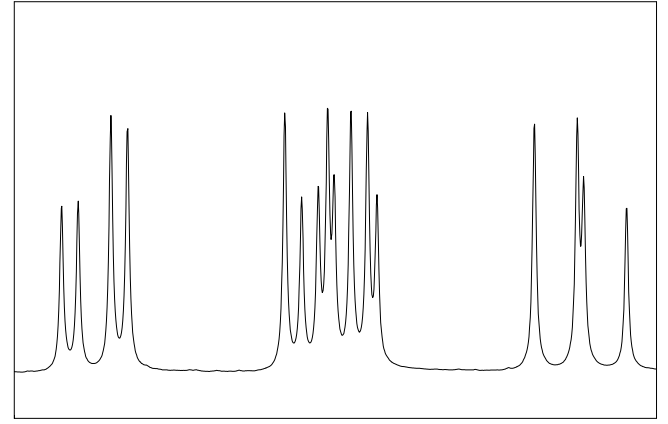


7.400 7.350 7.300
ppm (t1)

7.406 7.395 7.390 7.383 7.378 7.372 7.369 7.367 7.359 7.357 7.352 7.347 7.342 7.338 7.335 7.328 7.324 7.322 7.318 5.060 5.053 5.043 5.037 5.032 5.025 5.015 5.009 4.581 4.575 4.562 4.556 4.495 4.488 4.482 4.478 4.475 4.469 4.462 4.459 4.398 4.381 4.378 4.362 2.444



5.050 5.000
ppm (t1)



4.550 4.500 4.450 4.400
ppm (t1)

5.00

1.06

2.40

9.96

10.0
ppm (t1)

5.0

0.0