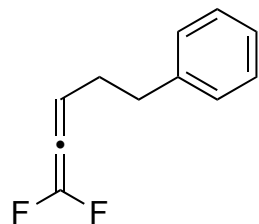
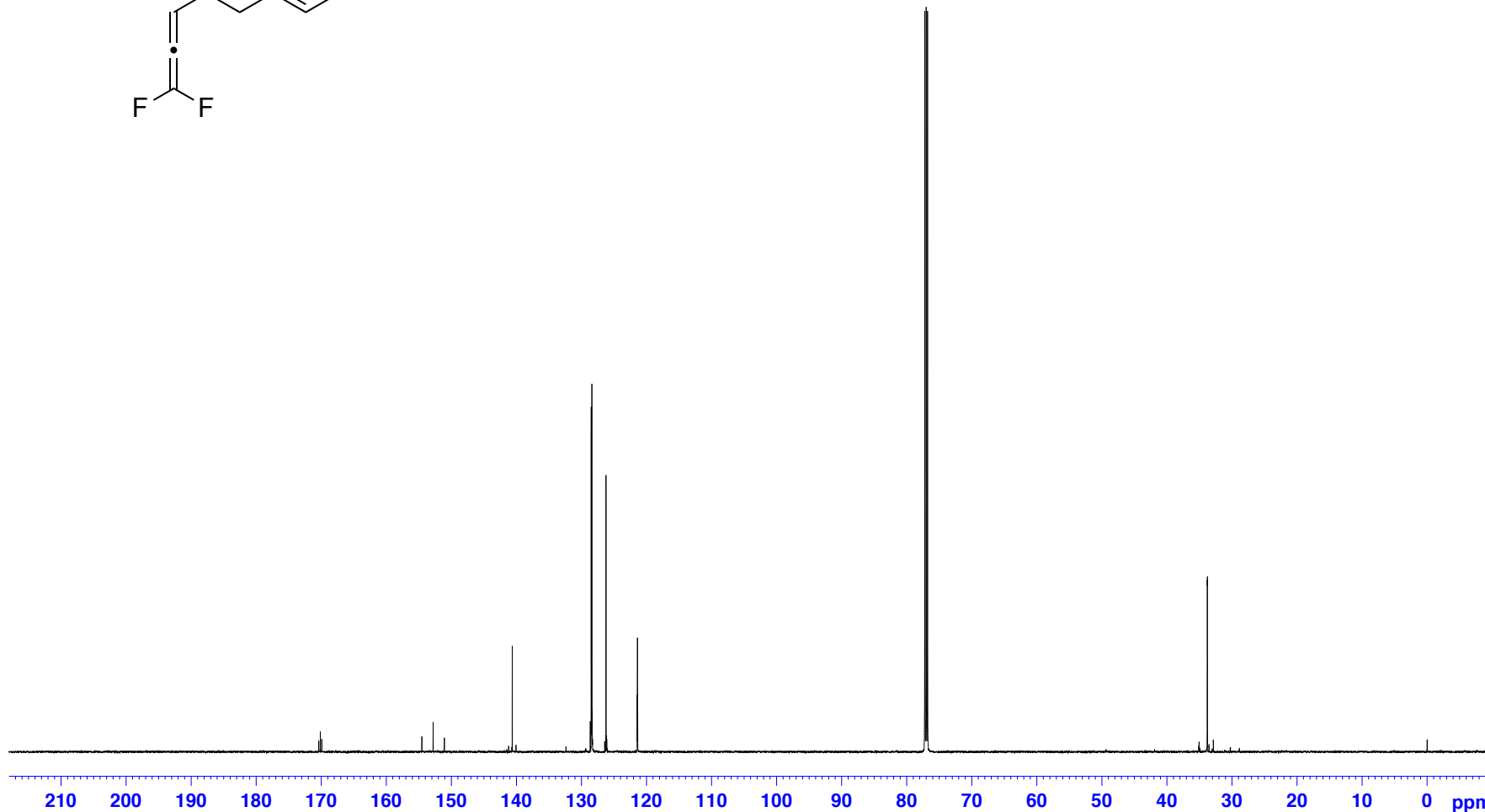


1,1-Difluoro-5-phenylpenta-1,2-diene, ¹³C NMR



170.3771
 170.1406
 169.9012
 154.5237
 152.7957
 151.0676
 141.1778
 140.6313
 140.0555
 128.4927
 128.3899
 126.2219
 121.4243
 121.3877
 121.3512

33.7995
 33.7836



Current Data Parameters
 NAME KS1-221-cl2
 EXPNO 21
 PROCNO 1

F2 - Acquisition Parameters
 Date_ 20160415
 Time 23.08
 INSTRUM spect
 PROBHD 5 mm CPPBBO BB
 PULPROG zgpg30
 TD 65536
 SOLVENT CDCl3
 NS 512
 DS 4
 SWH 36057.691 Hz
 FIDRES 0.550197 Hz
 AQ 0.9087659 sec
 RG 175.56
 DW 13.867 usec
 DE 18.00 usec
 TE 300.0 K
 D1 2.00000000 sec
 D11 0.03000000 sec
 TD0 1

===== CHANNEL f1 =====
 SFO1 150.9178981 MHz
 NUC1 13C
 P1 10.00 usec
 PLW1 70.00000000 W

===== CHANNEL f2 =====
 SFO2 600.1324005 MHz
 NUC2 1H
 CPDPRG[2] waltz16
 PCPD2 70.00 usec
 PLW2 26.00000000 W
 PLW12 0.76407999 W
 PLW13 0.37439999 W

F2 - Processing parameters
 SI 32768
 SF 150.9028095 MHz
 WDW EM
 SSB 0
 LB 1.00 Hz
 GB 0
 PC 1.40