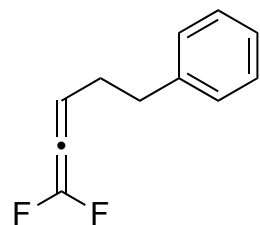


1,1-Difluoro-5-phenylpenta-1,2-diene, ¹³C NMR



170.3771
170.1406
169.9012

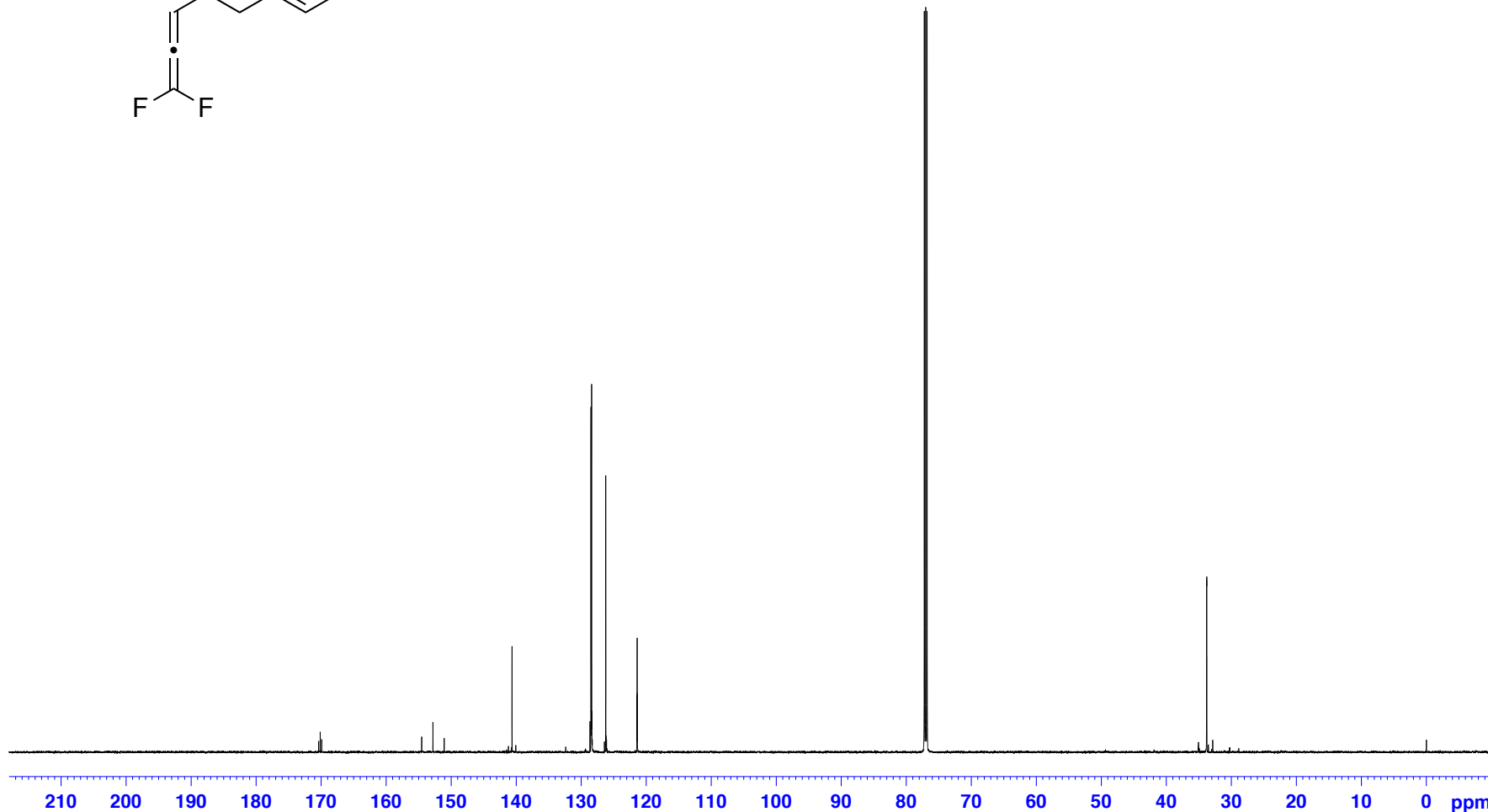
154.5237
152.7957
151.0676

141.1778
140.6313
140.0555

128.4927
128.3899
126.2219

121.4243
121.3877
121.3512

33.7995
33.7836



Current Data Parameters
NAME KS1-221-cl2
EXPNO 21
PROCNO 1

F2 - Acquisition Parameters
Date_ 20160415
Time 23.08
INSTRUM spect
PROBHD 5 mm CPPBBO BB
PULPROG zgpg30
TD 65536
SOLVENT CDCl3
NS 512
DS 4
SWH 36057.691 Hz
FIDRES 0.550197 Hz
AQ 0.9087659 sec
RG 175.56
DW 13.867 usec
DE 18.00 usec
TE 300.0 K
D1 2.00000000 sec
D11 0.03000000 sec
TD0 1

==== CHANNEL f1 =====
SFO1 150.9178981 MHz
NUC1 13C
P1 10.00 usec
PLW1 70.00000000 W

==== CHANNEL f2 =====
SFO2 600.1324005 MHz
NUC2 1H
CPDPRG[2] waltz16
PCPD2 70.00 usec
PLW2 26.00000000 W
PLW12 0.76407999 W
PLW13 0.37439999 W

F2 - Processing parameters
SI 32768
SF 150.9028095 MHz
WDW EM
SSB 0
LB 1.00 Hz
GB 0
PC 1.40