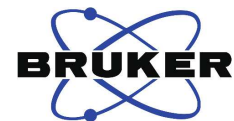


1,1-Difluoro-5-phenylpenta-1,2-diene, 1H NMR



Current Data Parameters
 NAME SS2-OS1
 EXPNO 10
 PROCNO 1

F2 - Acquisition Parameters
 Date_ 20160615
 Time 12.27
 INSTRUM spect
 PROBHD 5 mm CPPBBO BB
 PULPROG zg30
 TD 65536
 SOLVENT CDCl3
 NS 16
 DS 2
 SWH 12019.230 Hz
 FIDRES 0.183399 Hz
 AQ 2.7262976 sec
 RG 14.24
 DW 41.600 usec
 DE 10.00 usec
 TE 300.0 K
 D1 1.00000000 sec
 TD0 1

==== CHANNEL f1 =====
 SFO1 600.1337060 MHz
 NUC1 1H
 P1 12.00 usec
 PLW1 23.00000000 W

F2 - Processing parameters
 SI 65536
 SF 600.1300447 MHz
 WDW EM
 SSB 0
 LB 0.30 Hz
 GB 0
 PC 1.00

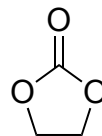
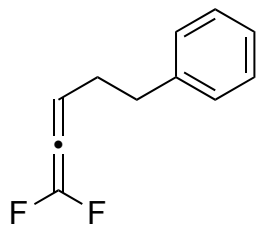
7.2946
7.2823
7.2702
7.2057
7.1934
7.1827
7.1704
6.4606
6.4511
6.4419

4.4459

2.8046
2.7919
2.7789
2.5769
2.5672
2.5559
2.5450
2.5340
2.5237

1.5717

-0.0001



(Internal Standard)

